



[Go to Product page](#)

Datasheet for ABIN100088

anti-GFP antibody (AA 246) (FITC)

4 Images

8 Publications

Overview

Quantity:	1 mg
Target:	GFP
Binding Specificity:	AA 246
Reactivity:	Aequorea victoria
Host:	Goat
Clonality:	Polyclonal
Conjugate:	This GFP antibody is conjugated to FITC
Application:	Flow Cytometry (FACS), Immunomicroscopy (IM)

Product Details

Immunogen:	The immunogen is a GST- Green Fluorescent Protein (GFP) fusion protein corresponding to the full length amino acid sequence derived from the jellyfish Aequorea victoria. Immunogen type: Recombinant
Isotype:	IgG
Characteristics:	Concentration Definition: by UV absorbance at 280 nm
Purification:	Pre-adsorbed

Target Details

Target:	GFP
Alternative Name:	GFP (GFP Products)

Target Details

Target Type:	Viral Protein
Background:	<p>GFP Fluorescein Conjugated Antibody is designed for immunofluorescence microscopy, fluorescence based plate assays (FLISA) and fluorescent western blotting. This product is also suitable for multiplex analysis, including multicolor imaging, utilizing various commercial platforms.</p> <p>Synonyms: GFP, Green Fluorescent Protein, GFP antibody, Green Fluorescent Protein antibody, EGFP, enhanced Green Fluorescent Protein, Aequorea victoria, Jellyfish.</p>

Application Details

Application Notes:	Suitable for immunomicroscopy and flow cytometry or FACS analysis as well as other antibody based fluorescent assays requiring lot-to-lot consistency.
Restrictions:	For Research Use only

Handling

Format:	Lyophilized
Reconstitution:	Restore with deionized water (or equivalent)
Concentration:	1.0 mg/mL
Buffer:	0.02 M Potassium Phosphate, 0.15 M Sodium Chloride, pH 7.2
Preservative:	Sodium azide
Precaution of Use:	This product contains sodium azide: a POISONOUS AND HAZARDOUS SUBSTANCE which should be handled by trained staff only.
Storage:	4 °C

Publications

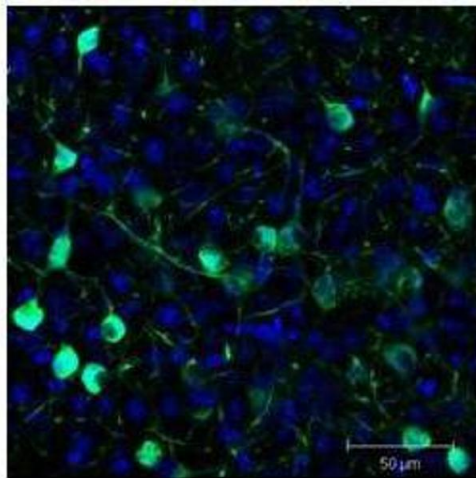
Product cited in:	<p>Tempfer, Kaser-Eichberger, Lehner, Gehwolf, Korntner, Kunkel, Wagner, Gruetz, Heindl, Schroedl, Traweger: "Bevacizumab Improves Achilles Tendon Repair in a Rat Model." in: Cellular physiology and biochemistry : international journal of experimental cellular physiology, biochemistry, and pharmacology, Vol. 46, Issue 3, pp. 1148-1158, (2018) (PubMed).</p>
-------------------	---

There are more publications referencing this product on: [Product page](#)



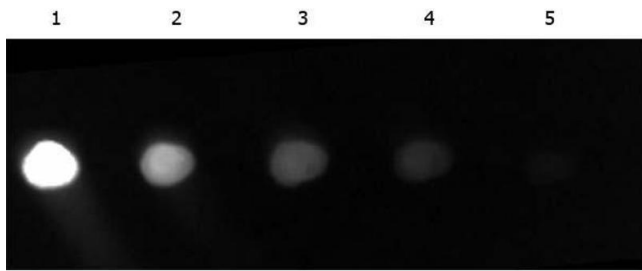
Western Blotting

Image 1.



Immunofluorescence

Image 2. Immunofluorescence Microscopy of GFP-GOAT-Antibody. Tissue: Sf-1:Cre mice crossed to the Z/EG reporter line. Mouse brain (coronal view, 20X magnification). Fixation: 4%PFA/PBS with o/n fixation, and subsequently transferred to a 30% sucrose solution. Antigen retrieval: frozen in OCT freezing medium (Sakura) and cryostat sectioned at 40 microns. Primary antibody: Goat anti-GFP was used at 1:500 dilution in free floating immunohistochemistry to detect GFP. Secondary antibody: Fluorochrome conjugated Anti-goat IgG secondary antibody was used for detection at 1:500 at 1:10,000 for 45 min at RT. Localization: Sf-1+ neurons and their processes of the ventromedial nucleus of the hypothalamus. Staining: eGFP as green fluorescent signal and sections were counterstained with DAPI.



Dot Blot

Image 3. Dot Blot of Fluorescein conjugated Goat anti-GFP. Antigen: GFP Load: Five point 3-fold serial dilution starting at 100ng (Dot 1). Primary antibody: None. Secondary Antibody: GFP Antibody Fluorescein Conjugated Pre-absorbed at 1:1,000 for 1hr at RT. Blocking: Blocking buffer for Fluorescent Blotting Imaged with FITC filter.

Please check the [product details page](#) for more images. Overall 4 images are available for ABIN100088.