



Datasheet for ABIN100716

Goat anti-Human IgA (Heavy Chain) Antibody (Alkaline Phosphatase (AP)) - Preadsorbed



[Go to Product page](#)

1 Image

Overview

Quantity:	1 mg
Target:	IgA
Binding Specificity:	Heavy Chain
Reactivity:	Human
Host:	Goat
Clonality:	Polyclonal
Conjugate:	Alkaline Phosphatase (AP)
Application:	ELISA, Immunohistochemistry (IHC), Western Blotting (WB)

Product Details

Immunogen:	Immunogen: Human IgA alpha heavy chain
Isotype:	IgG
Characteristics:	Concentration Definition: by UV absorbance at 280 nm
Purification:	Preadsorption: Solid phase absorption
Sterility:	Sterile filtered

Target Details

Target:	IgA
Abstract:	IgA Products
Target Type:	Antibody

Target Details

Background: Synonyms: goat anti-Human IgA (alpha chain) alkaline phosphatase conjugated Antibody, goat anti-Human IgA alpha Antibody alkaline phosphatase conjugation

Background: Anti-Human IgA Alkaline Phosphatase Antibody generated in goat detects immunoglobulin A (alpha chain) from human. Immunoglobulin A (IgA) is an antibody that plays a critical role in mucosal immunity. IgA has two subclasses (IgA1 and IgA2) and can exist in a dimeric form called secretory IgA (sIgA). Secondary Antibodies are available in a variety of formats and conjugate types. When choosing a secondary antibody product, consideration must be given to species and immunoglobulin specificity, conjugate type, fragment and chain specificity, level of cross-reactivity, and host-species source and fragment composition.

Application Details

Application Notes: Immunohistochemistry Dilution: 1:200 - 1:1,000

Application Note: This product has been assayed against 1.0 µg of Human IgA in a standard capture ELISA using pNPP p-nitrophenyl phosphate code # NPP-10 as a substrate for 30 minutes at room temperature. A working dilution of 1:1,500 to 1:7,000 is suggested for this product.

ELISA Dilution: 1:2,000 - 1:10,000

Western Blot Dilution: 1:500 - 1:2,500

Restrictions: For Research Use only

Handling

Format: Liquid

Concentration: 1.0 mg/mL

Buffer: Buffer: 0.05 M Tris Chloride, 0.15M Sodium Chloride, 0.001M Magnesium Chloride, 0.0001M Zinc Chloride, 50 % (v/v) Glycerol, pH 8.0

Stabilizer: 10 mg/mL Bovine Serum Albumin (BSA) - Immunoglobulin and Protease free

Preservative: 0.1 % (w/v) Sodium Azide

Preservative: Sodium azide

Precaution of Use: This product contains Sodium azide: a POISONOUS AND HAZARDOUS SUBSTANCE which should be handled by trained staff only.

Handling Advice: **Do not freeze!** Freezing alkaline phosphatase conjugates will result in a substantial loss of enzymatic activity.

Do not add Sodium azide.

Handling

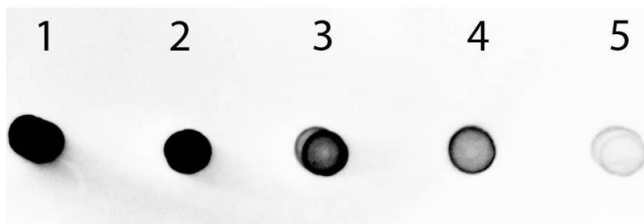
Dilute only prior to immediate use

Each reagent is stable for the period shown on the bottle label if stored as directed.

Storage: 4 °C

Expiry Date: 12 months

Images



Dot Blot

Image 1. Dot Blot of Human IgA Antibody Alkaline Phosphatase Conjugated. Antigen: Human IgA. Load: Lane 1 - 100ng Lane 2 - 33.33ng Lane 3 - 11.11ng Lane 4 - 3.70ng Lane 5 - 1.23ng. Primary antibody: n/a Secondary antibody: Human IgA Antibody Alkaline Phosphatase Conjugated at 1:1,000 for 60 min at RT. Block: ABIN925618 for 60 min at RT. Visualized using Alkaline Phosphatase Substrate.