



[Go to Product page](#)

Datasheet for ABIN100722

Rabbit anti-Human IgA (Heavy Chain) Antibody - Preadsorbed

1 Image

Overview

Quantity:	2 mg
Target:	IgA
Binding Specificity:	Heavy Chain
Reactivity:	Human
Host:	Rabbit
Clonality:	Polyclonal
Application:	ELISA, Immunohistochemistry (IHC), Western Blotting (WB)

Product Details

Immunogen:	Immunogen: Human IgA alpha heavy chain
Isotype:	IgG
Characteristics:	Concentration Definition: by UV absorbance at 280 nm
Purification:	Preadsorption: Solid phase absorption
Sterility:	Sterile filtered

Target Details

Target:	IgA
Abstract:	IgA Products
Target Type:	Antibody
Background:	Synonyms: Rabbit Anti Human IgA (alpha chain) Antibody, Rabbit Anti-Human IgA (alpha chain)

Target Details

Antibody, Rabbit Anti Human IgA Antibody

Background: Anti-Human IgA Antibody generated in rabbit detects immunoglobulin A (alpha chain) from human. Immunoglobulin A (IgA) is an antibody that plays a critical role in mucosal immunity. IgA has two subclasses (IgA1 and IgA2) and can exist in a dimeric form called secretory IgA (sIgA). Secondary Antibodies are available in a variety of formats and conjugate types. When choosing a secondary antibody product, consideration must be given to species and immunoglobulin specificity, conjugate type, fragment and chain specificity, level of cross-reactivity, and host-species source and fragment composition.

Application Details

Application Notes: Immunohistochemistry Dilution: 1:250 - 1:1,000
Application Note: Anti-Human IgA Antibody is designed for ELISA and western blotting. This product is also suitable for multiplex analysis, including multicolor imaging, utilizing various commercial platforms.
ELISA Dilution: 1:5,000 - 1:20,000
Western Blot Dilution: 1:500 - 1:2,000

Restrictions: For Research Use only

Handling

Format: Liquid

Concentration: 2.1 mg/mL

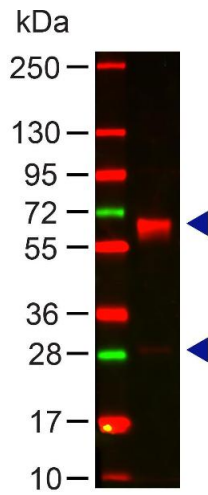
Buffer: Buffer: 0.02 M Potassium Phosphate, 0.15 M Sodium Chloride, pH 7.2
Stabilizer: None
Preservative: 0.01 % (w/v) Sodium Azide

Preservative: Sodium azide

Precaution of Use: This product contains Sodium azide: a POISONOUS AND HAZARDOUS SUBSTANCE which should be handled by trained staff only.

Storage: 4 °C,-20 °C

Expiry Date: 12 months



Western Blotting

Image 1. Western Blot of Rabbit Anti-HUMAN IgA (alpha chain) Antibody Lane 1: Human IgA Load: 100 ng per lane
 Primary antibody: HUMAN IgA (alpha chain) Antibody at 1:1000 for 60 min at RT Secondary antibody: DyLight 649 goat anti-rabbit at 1:20,000 for 30 min at RT Block: 5% BLOTTO 30 min at RT Predicted/Observed size: 60and 28 kDa, 60 and 28 kDa