



Datasheet for ABIN100724

Rabbit anti-Human IgA (Heavy Chain) Antibody (Biotin) - Preadsorbed



[Go to Product page](#)

1 Image

Overview

Quantity:	1 mg
Target:	IgA
Binding Specificity:	Heavy Chain
Reactivity:	Human
Host:	Rabbit
Clonality:	Polyclonal
Conjugate:	Biotin
Application:	ELISA, Immunohistochemistry (IHC), Western Blotting (WB)

Product Details

Immunogen:	Immunogen: Human IgA alpha heavy chain
Isotype:	IgG
Characteristics:	Concentration Definition: by UV absorbance at 280 nm
Purification:	Preadsorption: Solid phase absorption

Target Details

Target:	IgA
Abstract:	IgA Products
Target Type:	Antibody
Background:	Synonyms: Rabbit Anti Human IgA (alpha chain) Antibody Biotin Conjugated, Rabbit Anti-

Target Details

Human IgA (alpha chain) Antibody Biotin Conjugated, Rabbit Anti Human IgA Antibody Biotin Conjugated

Background: Anti-Human IgA Biotin Antibody generated in rabbit detects immunoglobulin A (alpha chain) from human. Immunoglobulin A (IgA) is an antibody that plays a critical role in mucosal immunity. IgA has two subclasses (IgA1 and IgA2) and can exist in a dimeric form called secretory IgA (sIgA). Secondary Antibodies are available in a variety of formats and conjugate types. When choosing a secondary antibody product, consideration must be given to species and immunoglobulin specificity, conjugate type, fragment and chain specificity, level of cross-reactivity, and host-species source and fragment composition.

Application Details

Application Notes:	Immunohistochemistry Dilution: 1:250 - 1:1,000 Application Note: This product has been assayed against 1.0 µg of Human IgA in a standard capture ELISA using Peroxidase Conjugated Streptavidin #S000-03 and ABTS (2,2'-azino-bis-[3-ethylbenthiiazoline-6-sulfonic acid]) code # ABTS-100 as a substrate for 30 minutes at room temperature. A working dilution of 1:10,000 to 1:100,000 of the reconstitution concentration is suggested for this product. ELISA Dilution: 1:5,000 - 1:20,000 Western Blot Dilution: 1:500 - 1:2,000
--------------------	-------------------------------------------------------------------------------------------------------------------------------------------------------------------------------------------------------------------------------------------------------------------------------------------------------------------------------------------------------------------------------------------------------------------------------------------------------------------------------------------------------------------------------------------------

Restrictions:	For Research Use only
---------------	-----------------------

Handling

Format:	Lyophilized
Reconstitution:	Reconstitution Volume: 1.0 mL Reconstitution Buffer: Restore with deionized water (or equivalent)
Concentration:	1.0 mg/mL
Buffer:	Buffer: 0.01 M Sodium Phosphate, 0.15 M Sodium Chloride, pH 7.2 Stabilizer: 10 mg/mL Bovine Serum Albumin (BSA) - Immunoglobulin and Protease free Preservative: 0.01 % (w/v) Thimerosal
Preservative:	Thimerosal (Merthiolate)
Precaution of Use:	This product contains Thimerosal (Merthiolate): a POISONOUS AND HAZARDOUS SUBSTANCE which should be handled by trained staff only.

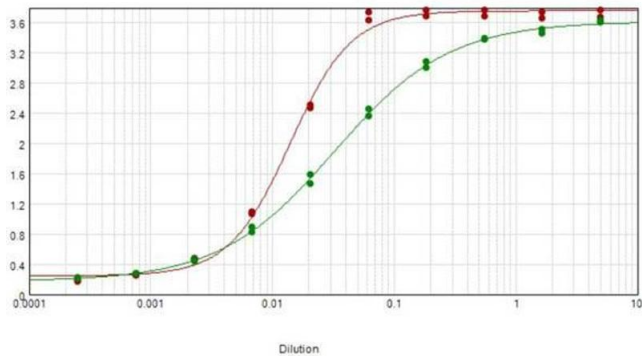
Handling

Handling Advice: Aliquot to Avoid repeated freezing and thawing.

Storage: RT,4 °C,-20 °C

Expiry Date: 12 months

Images



ELISA

Image 1. ELISA results of purified Rabbit Anti-HUMAN IgA (alpha chain) Biotin Conjugated Antibody tested against purified Human IgA. Each well was coated in duplicate with 1.0 µg of Human IgA (red line). The starting dilution of antibody was 5µg/ml and the X-axis represents the Log10 of a 3-fold dilution. This titration is a 4-parameter curve fit where the IC50 is defined as the titer of the antibody. Assay performed using Blocking buffer MB-060-1000, Streptavidin HRP conjugate 1:10,000, and TMB-1000 substrate.