



Datasheet for ABIN100725

Rabbit anti-Human IgA (Heavy Chain) Antibody (FITC) - Preadsorbed



[Go to Product page](#)

1 Image

Overview

Quantity:	1 mg
Target:	IgA
Binding Specificity:	Heavy Chain
Reactivity:	Human
Host:	Rabbit
Clonality:	Polyclonal
Conjugate:	FITC
Application:	Flow Cytometry (FACS), FLISA, Fluorescence Microscopy (FM)

Product Details

Immunogen:	Immunogen: Human IgA alpha heavy chain
Isotype:	IgG
Characteristics:	Concentration Definition: by UV absorbance at 280 nm
Purification:	Preadsorption: Solid phase absorption
Labeling Ratio:	5.1

Target Details

Target:	IgA
Abstract:	IgA Products
Target Type:	Antibody

Target Details

Background:	<p>Synonyms: rabbit anti-Human IgA (alpha chain) fluorescein conjugated Antibody, rabbit anti-Human IgA alpha Antibody FITC conjugation</p> <p>Background: Anti-Human IgA Fluorescein Antibody generated in rabbit detects immunoglobulin A (alpha chain) from human. Immunoglobulin A (IgA) is an antibody that plays a critical role in mucosal immunity. IgA has two subclasses (IgA1 and IgA2) and can exist in a dimeric form called secretory IgA (sIgA). Secondary Antibodies are available in a variety of formats and conjugate types. When choosing a secondary antibody product, consideration must be given to species and immunoglobulin specificity, conjugate type, fragment and chain specificity, level of cross-reactivity, and host-species source and fragment composition.</p>
-------------	---

Application Details

Application Notes:	<p>Application Note: Anti-Human IgA Fluorescein Antibody is designed for immunofluorescence microscopy, fluorescence based plate assays (FLISA) and fluorescent western blotting. This product is also suitable for multiplex analysis, including multicolor imaging, utilizing various commercial platforms.</p> <p>FLISA Dilution: 1:10,000 - 1:50,000</p> <p>Flow Cytometry Dilution: 1:500 - 1:2,500</p> <p>IF Microscopy Dilution: 1:1,000 - 1:5,000</p>
--------------------	---

Comment:	Excitation/Emission wavelength: 494 nm/514 nm
----------	---

Restrictions:	For Research Use only
---------------	-----------------------

Handling

Format:	Lyophilized
---------	-------------

Reconstitution:	Reconstitution Volume: 1.0 mL
	Reconstitution Buffer: Restore with deionized water (or equivalent)

Concentration:	1.0 mg/mL
----------------	-----------

Buffer:	Buffer: 0.02 M Potassium Phosphate, 0.15 M Sodium Chloride, pH 7.2
	Stabilizer: 10 mg/mL Bovine Serum Albumin (BSA) - Immunoglobulin and Protease free
	Preservative: 0.01 % (w/v) Sodium Azide

Preservative:	Sodium azide
---------------	--------------

Precaution of Use:	This product contains Sodium azide: a POISONOUS AND HAZARDOUS SUBSTANCE which should be handled by trained staff only.
--------------------	--

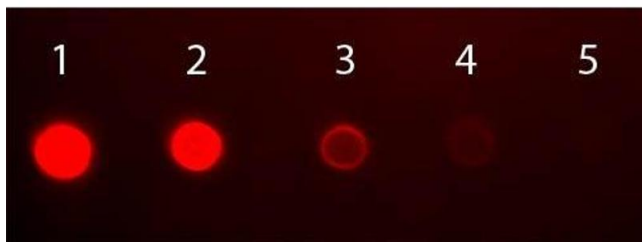
Handling

Handling Advice: Product is photosensitive and should be protected from light.

Storage: RT,4 °C,-20 °C

Expiry Date: 12 months

Images



Dot Blot

Image 1. Dot Blot of Human IgA (alpha chain) Antibody Fluorescein Conjugated. Antigen: Human IgA. Load: Lane 1 - 50 ng Lane 2 - 16.67 ng Lane 3 - 5.56 ng Lane 4 - 1.85 ng Lane 5 - 0.62 ng. Primary antibody: none. Secondary antibody: Human IgA (alpha chain) Antibody Fluorescein Conjugated at 1:1,000 for 60 min at RT. Block: ABIN925618 for 60 min at RT.