

Datasheet for ABIN100808

**Goat anti-Mouse IgA, IgG, IgM (Heavy & Light Chain) Antibody
(Texas Red (TR)) - Preadsorbed**[Go to Product page](#)**1** Image

Overview

Quantity:	2 mg
Target:	IgA, IgG, IgM
Binding Specificity:	Heavy & Light Chain
Reactivity:	Mouse
Host:	Goat
Clonality:	Polyclonal
Conjugate:	Texas Red (TR)
Application:	Flow Cytometry (FACS), Fluorescence Microscopy (FM), FLISA

Product Details

Immunogen:	Immunogen: Mouse IgG IgA and IgM whole molecule
Isotype:	IgG
Specificity:	IgG IgA IgM
Cross-Reactivity:	Mouse (Murine)
Characteristics:	Mouse IgG IgA IgM (H&L) Antibody Texas Red™ Conjugated is designed for immunofluorescence microscopy, fluorescence based plate assays (FLISA) and fluorescent western blotting. This product is also suitable for multiplex analysis, including multicolor imaging, utilizing various commercial platforms. Concentration Definition: by UV absorbance at 280 nm
Purification:	Preadsorption: Solid phase absorption

Product Details

Labeling Ratio: 3.12

Target Details

Target: IgA, IgG, IgM

Alternative Name: IgG IgA IgM (IgA, IgG, IgM Products)

Target Type: Antibody

Background: Synonyms: Goat Anti Mouse IgG IgA IgM Antibody Texas Red™ Conjugation, Goat Anti-Mouse IgG IgA IgM Texas Red™ conjugated Antibody, Goat Anti-Mouse IgGAM Texas Red™ conjugate

Background: Anti-Mouse IgG IgA IgM Texas Red Antibody generated in goat detects reactivity to Mouse IgG, Mouse IgA, and Mouse IgM. Secreted as part of the adaptive immune response by plasma B cells, immunoglobulin G constitutes 75 % of serum immunoglobulins.

Immunoglobulin G binds to viruses, bacteria, as well as fungi and facilitates their destruction or neutralization via agglutination (and thereby immobilizing them), activation of the complement cascade, and opsonization for phagocytosis. The whole IgG molecule possesses both the F(c) region, recognized by high-affinity Fc receptor proteins, as well as the F(ab) region possessing the epitope-recognition site. Both the Heavy and Light chains of the antibody molecule are present. Immunoglobulin A (IgA) is an antibody that plays a critical role in mucosal immunity. IgA has two subclasses (IgA1 and IgA2) and can exist in a dimeric form called secretory IgA (sIgA). Immunoglobulin M is the largest antibody isotype and the first to be secreted against an initial exposure to antigen. IgM is predominantly produced in the spleen. Formed from covalently linking 5 immunoglobulins together. Secondary Antibodies are available in a variety of formats and conjugate types. When choosing a secondary antibody product, consideration must be given to species and immunoglobulin specificity, conjugate type, fragment and chain specificity, level of cross-reactivity, and host-species source and fragment composition.

Application Details

Application Notes: Application Note: Mouse IgG IgA IgM (H&L) Antibody Texas Red™ Conjugated is designed for immunofluorescence microscopy, fluorescence based plate assays (FLISA) and fluorescent western blotting. This product is also suitable for multiplex analysis, including multicolor imaging, utilizing various commercial platforms.

FLISA Dilution: 1:10,000 - 1:50,000

Flow Cytometry Dilution: 1:500 - 1:2,500

IF Microscopy Dilution: 1:1,000 - 1:5,000

Application Details

Comment: Texas Red™ is a registered trademark of Molecular Probes Inc.

Restrictions: For Research Use only

Handling

Format: Lyophilized

Reconstitution: Reconstitution Volume: 1.0 mL
Reconstitution Buffer: Restore with deionized water (or equivalent)

Concentration: 2.0 mg/mL

Buffer: Buffer: 0.02 M Potassium Phosphate, 0.15 M Sodium Chloride, pH 7.2
Stabilizer: 10 mg/mL Bovine Serum Albumin (BSA) - Immunoglobulin and Protease free
Preservative: 0.01 % (w/v) Sodium Azide

Preservative: Sodium azide

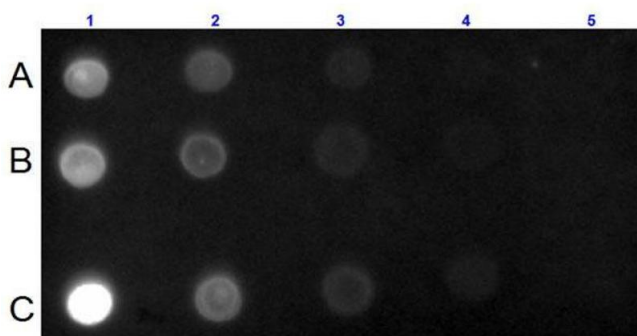
Precaution of Use: This product contains Sodium azide: a POISONOUS AND HAZARDOUS SUBSTANCE which should be handled by trained staff only.

Handling Advice: Product is photosensitive and should be protected from light.

Storage: RT, 4 °C, -20 °C

Expiry Date: 12 months

Images



Dot Blot

Image 1. Dot Blot for Goat Anti-Mouse IgG IgA IgM (H&L) Antibody Dot Blot for Mouse IgG IgA IgM (H&L) Antibody (GOAT) Texas Conjugated. Lane 1A: 100 ng Ms IgG. Lane 1B: 100 ng Ms IgA. Lane 1C: 100 ng Ms IgM. Lanes 2-5: serial dilution 3 fold of respective Antigen. Primary Antibody: none. Secondary Antibody: Goat anti-Mouse IgG IgA IgM (H&L) Antibody Texas Conjugated at 1:1,000 dilution at RT for 1 hour. Block: ABIN925618 at RT for 30 minutes.