

Datasheet for ABIN100903

Rabbit anti-Cow IgG (Heavy & Light Chain) Antibody (FITC) - Preadsorbed



[Go to Product page](#)

1 Image

Overview

Quantity:	2 mg
Target:	IgG
Binding Specificity:	Heavy & Light Chain
Reactivity:	Cow
Host:	Rabbit
Clonality:	Polyclonal
Conjugate:	FITC
Application:	FLISA, Fluorescence Microscopy (FM)

Product Details

Immunogen:	Immunogen: Bovine IgG whole molecule
Isotype:	IgG
Specificity:	IgG (H&L)
Characteristics:	Concentration Definition: by UV absorbance at 280 nm
Purification:	Preadsorption: Solid phase absorption
Labeling Ratio:	3.2

Target Details

Target:	IgG
Abstract:	IgG Products

Target Details

Target Type:	Antibody
Background:	Synonyms: rabbit anti bovine IgG FITC, rabbit anti Bovine IgG Fluorescein Conjugated Background: Secreted as part of the adaptive immune response by plasma B cells, immunoglobulin G constitutes 75 % of serum immunoglobulins. Immunoglobulin G binds to viruses, bacteria, as well as fungi and facilitates their destruction or neutralization via agglutination (and thereby immobilizing them), activation of the compliment cascade, and opsinization for phagocytosis. This product possesses the F(ab) region possessing the epitope-recognition site, both heavy and light chains of the antibody molecule are present.

Application Details

Application Notes:	Application Note: This product is designed for immunofluorescence microscopy, fluorescence based plate assays (FLISA) and fluorescent western blotting. This product is also suitable for multiplex analysis, including multicolor imaging, utilizing various commercial platforms. FLISA Dilution: 1:10,000 - 1:50,000 IF Microscopy Dilution: 1:1,000 - 1:5,000
Comment:	Excitation/Emission wavelength: 494 nm/514 nm
Restrictions:	For Research Use only

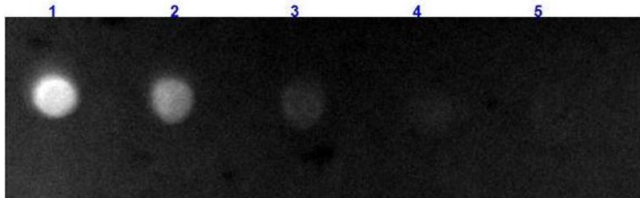
Handling

Format:	Lyophilized
Reconstitution:	Reconstitution Volume: 1.0 mL Reconstitution Buffer: Restore with deionized water (or equivalent)
Concentration:	2.0 mg/mL
Buffer:	Buffer: 0.01 M Sodium Phosphate, 0.15 M Sodium Chloride, pH 7.2 Stabilizer: 10 mg/mL Polyethylene Glycol (PEG-8000) Preservative: 0.01 % (w/v) Sodium Azide
Preservative:	Sodium azide
Precaution of Use:	This product contains Sodium azide: a POISONOUS AND HAZARDOUS SUBSTANCE which should be handled by trained staff only.
Handling Advice:	Product is photosensitive and should be protected from light.
Storage:	RT, 4 °C, -20 °C

Handling

Expiry Date: 12 months

Images



Dot Blot

Image 1. Dot Blot results of Rabbit Anti-Bovine IgG Antibody Fluorescein Conjugated. Dots are Bovine IgG at (1) 100ng, (2) 33.3ng, (3) 11.1ng, (4) 3.70ng, (5) 1.23ng. Blocking: ABIN925618 for 60 min at RT. Primary Antibody: none. Secondary Antibody: Rabbit Anti-Bovine IgG Antibody Fluorescein at 1µg/mL for 1hr at RT. Imaged with BioRad ChemiDoc, FITC filter.