



Datasheet for ABIN100982

## Rabbit anti-Cat IgG (F(ab')<sub>2</sub> Region) Antibody (Alkaline Phosphatase (AP)) - Preadsorbed



[Go to Product page](#)

### 1 Image

#### Overview

Quantity:	1 mg
Target:	IgG
Binding Specificity:	F(ab') <sub>2</sub> Region
Reactivity:	Cat
Host:	Rabbit
Clonality:	Polyclonal
Conjugate:	Alkaline Phosphatase (AP)
Application:	ELISA, Immunohistochemistry (IHC), Western Blotting (WB)

#### Product Details

Immunogen:	Immunogen: Cat IgG F(ab') <sub>2</sub> fragment
Isotype:	IgG
Specificity:	IgG F(ab') <sub>2</sub>
Characteristics:	Concentration Definition: by UV absorbance at 280 nm
Purification:	Preadsorption: Solid phase absorption
Sterility:	Sterile filtered

#### Target Details

Target:	IgG
Abstract:	<a href="#">IgG Products</a>

## Target Details

---

Target Type:	Antibody
Background:	<p>Synonyms: Rabbit Anti-Cat IgG F(ab')<sub>2</sub> Alkaline Phosphatase Conjugated Antibody, Rabbit Anti-Cat IgG Fab2 Fragment Antibody Alk Phos conjugation</p> <p>Background: Secreted as part of the adaptive immune response by plasma B cells, immunoglobulin G constitutes 75 % of serum immunoglobulins. Immunoglobulin G binds to viruses, bacteria, as well as fungi and facilitates their destruction or neutralization via agglutination (and thereby immobilizing them), activation of the compliment cascade, and opsinization for phagocytosis. Secondary Antibodies are available in a variety of formats and conjugate types. When choosing a secondary antibody product, consideration must be given to species and immunoglobulin specificity, conjugate type, fragment and chain specificity, level of cross-reactivity, and host-species source and fragment composition. Anti-Cat IgG F(ab')<sub>2</sub> antibody is ideal for investigators in Immunology, Cancer, and Microbiology research.</p>

## Application Details

---

Application Notes:	<p>Immunohistochemistry Dilution: 1:200 - 1:1,000</p> <p>Application Note: Anti-Cat IgG F(ab')<sub>2</sub> Alk Phos conjugate is suitable for immunoblotting (western or dot blot), ELISA, immunoelectron microscopy and immunohistochemistry as well as other antibody-based enzymatic assays requiring lot-to-lot consistency.</p> <p>ELISA Dilution: 1:5,000</p> <p>Western Blot Dilution: 1:500 - 1:2,500</p>
Restrictions:	For Research Use only

## Handling

---

Format:	Liquid
Concentration:	1.0 mg/mL
Buffer:	<p>Buffer: 0.05 M Tris Chloride, 0.15M Sodium Chloride, 0.001M Magnesium Chloride, 0.0001M Zinc Chloride, 50 % (v/v) Glycerol, pH 8.0</p> <p>Stabilizer: 10 mg/mL Bovine Serum Albumin (BSA) - Immunoglobulin and Protease free</p> <p>Preservative: 0.01 % (w/v) Sodium Azide</p>
Preservative:	Sodium azide
Precaution of Use:	This product contains Sodium azide: a POISONOUS AND HAZARDOUS SUBSTANCE which should be handled by trained staff only.

## Handling

Handling Advice: **Do not freeze!** Freezing alkaline phosphatase conjugates will result in a substantial loss of enzymatic activity.

**Do not add Sodium azide.**

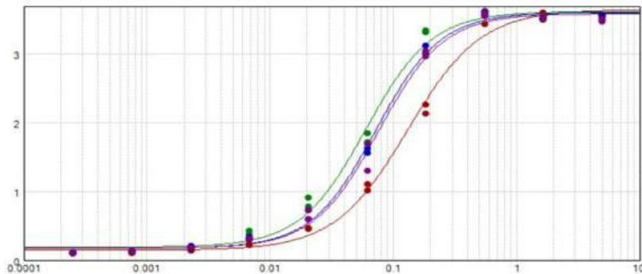
Dilute only prior to immediate use

Each reagent is stable for the period shown on the bottle label if stored as directed.

Storage: 4 °C

Expiry Date: 12 months

## Images



### ELISA

**Image 1.** ELISA results of purified Rabbit Anti-Cat IgG F(ab')<sub>2</sub> Alkaline Phosphatase Conjugated Antibody tested against Cat IgG F(ab')<sub>2</sub>. (Red Line) Each well was coated in duplicate with 1.0µg of antigen. The starting dilution of antibody was 5µg/ml and the X-axis represents the Log<sub>10</sub> of a 3-fold dilution. This titration is a 4-parameter curve fit where the IC<sub>50</sub> is defined as the titer of the antibody. Assay performed using Blocking buffer and TMB substrate .