



[Go to Product page](#)

Datasheet for ABIN100993

Goat anti-Cat IgG (Fc Region) Antibody (FITC) - Preadsorbed

1 Image

Overview

Quantity:	2 mg
Target:	IgG
Binding Specificity:	Fc Region
Reactivity:	Cat
Host:	Goat
Clonality:	Polyclonal
Conjugate:	FITC
Application:	Flow Cytometry (FACS), FLISA, Fluorescence Microscopy (FM)

Product Details

Immunogen:	Immunogen: Cat IgG F(c) fragment
Isotype:	IgG
Specificity:	IgG F(c)
Characteristics:	Concentration Definition: by UV absorbance at 280 nm
Purification:	PreadSORPTION: immunoaffinity chromatography using Cat IgG coupled to agarose beads
Labeling Ratio:	2.75

Target Details

Target:	IgG
Abstract:	IgG Products

Target Details

Target Type:	Antibody
Background:	<p>Synonyms: Goat anti-Cat IgG F(c) Fluorescein Conjugated Antibody, Goat anti-Cat IgG Fc FITC Conjugated Antibody</p> <p>Background: Secreted as part of the adaptive immune response by plasma B cells, immunoglobulin G constitutes 75 % of serum immunoglobulins. Immunoglobulin G binds to viruses, bacteria, as well as fungi and facilitates their destruction or neutralization via agglutination (and thereby immobilizing them), activation of the compliment cascade, and opsinization for phagocytosis. Secondary Antibodies are available in a variety of formats and conjugate types. When choosing a secondary antibody product, consideration must be given to species and immunoglobulin specificity, conjugate type, fragment and chain specificity, level of cross-reactivity, and host-species source and fragment composition. Anti-Cat IgG F(c) antibody is ideal for investigators in Immunology, Cancer, and Microbiology research.</p>

Application Details

Application Notes:	<p>Application Note: This product is designed for immunofluorescence microscopy, fluorescence based plate assays (FLISA) and fluorescent western blotting. This product is also suitable for multiplex analysis, including multicolor imaging, utilizing various commercial platforms.</p> <p>FLISA Dilution: 1:10,000 - 1:50,000</p> <p>Flow Cytometry Dilution: 1:500 - 1:2,500</p> <p>IF Microscopy Dilution: 1:1,000 - 1:5,000</p>
Comment:	Excitation/Emission wavelength: 494 nm/514 nm
Restrictions:	For Research Use only

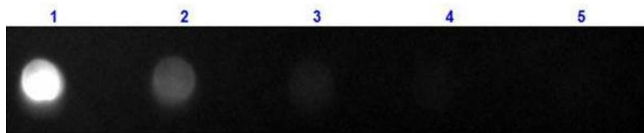
Handling

Format:	Lyophilized
Reconstitution:	<p>Reconstitution Volume: 1.0 mL</p> <p>Reconstitution Buffer: Restore with deionized water (or equivalent)</p>
Concentration:	2.0 mg/mL
Buffer:	<p>Buffer: 0.02 M Potassium Phosphate, 0.15 M Sodium Chloride, pH 7.2</p> <p>Stabilizer: 10 mg/mL Bovine Serum Albumin (BSA) - Immunoglobulin and Protease free</p> <p>Preservative: 0.01 % (w/v) Sodium Azide</p>
Preservative:	Sodium azide

Handling

Precaution of Use:	This product contains Sodium azide: a POISONOUS AND HAZARDOUS SUBSTANCE which should be handled by trained staff only.
Handling Advice:	Product is photosensitive and should be protected from light.
Storage:	RT,4 °C,-20 °C
Expiry Date:	12 months

Images



Dot Blot

Image 1. Dot Blot of Anti-CAT IgG F(c) (GOAT) Antibody Fluorescein Conjugated Dot Blot of Anti-CAT IgG F(c) (GOAT) Antibody Fluorescein Conjugated. Lane 1: 100 ng Cat F(c). Lanes 2-5: serial dilution 3 fold. Primary Antibody: none. Secondary Antibody: Goat Anti-Cat IgG F(c) Antibody FITC at 1:1000 dilution at RT for 60 minutes. Block: ABIN925618 for 30 min at RT.