



Datasheet for ABIN101014

Goat anti-Chicken IgG (Heavy & Light Chain) Antibody (Alkaline Phosphatase (AP)) - Preadsorbed



[Go to Product page](#)

2 Images

Overview

| | |
|----------------------|--|
| Quantity: | 1 mg |
| Target: | IgG |
| Binding Specificity: | Heavy & Light Chain |
| Reactivity: | Chicken |
| Host: | Goat |
| Clonality: | Polyclonal |
| Conjugate: | Alkaline Phosphatase (AP) |
| Application: | ELISA, Immunohistochemistry (IHC), Western Blotting (WB) |

Product Details

| | |
|-------------------|---|
| Immunogen: | Immunogen: Anti-Chicken IgG whole molecule was produced by repeated immunization with Chicken IgG whole molecule in goat. Immunogen Type: Native Protein |
| Isotype: | IgG |
| Specificity: | IgG (H&L) |
| Cross-Reactivity: | Chicken |
| Characteristics: | Anti-Chicken IgG whole molecule antibody generated in goat detects specifically Chicken IgG whole molecule. This secondary antibody anti-Chicken is ideal for investigators who routinely perform ELISA, Sandwich ELISA, titration assays, western-blot, immunoprecipitation and more generally immunoassays. Concentration Definition: by UV absorbance at 280 nm |

Product Details

| | |
|---------------|---|
| Purification: | Preadsorption: immunoaffinity chromatography using Chicken IgG coupled to agarose beads |
| Sterility: | Sterile filtered |

Target Details

| | |
|--------------|--|
| Target: | IgG |
| Abstract: | IgG Products |
| Target Type: | Antibody |
| Background: | <p>Synonyms: Chicken Antibody, Gt-a-Chicken IgG, Chicken Antibody in Goat, Chicken Secondary Antibody</p> <p>Background: Anti-Chicken IgG Alkaline Phosphatase Antibody generated in goat detects chicken IgG. Secreted as part of the adaptive immune response by plasma B cells, immunoglobulin G constitutes 75 % of serum immunoglobulins. Immunoglobulin G binds to viruses, bacteria, as well as fungi and facilitates their destruction or neutralization via agglutination (and thereby immobilizing them), activation of the compliment cascade, and opsinization for phagocytosis. The whole IgG molecule possesses both the F(c) region, recognized by high-affinity Fc receptor proteins, as well as the F(ab) region possessing the epitope-recognition site. Both heavy and light chains of the antibody molecule are present.</p> |

Application Details

| | |
|--------------------|---|
| Application Notes: | <p>Immunohistochemistry Dilution: 1:200 - 1:1,000</p> <p>Application Note: Anti-Chicken IgG whole molecule is suitable for use in immunoelectrophoresis, western-blot, competitive western-blot, ELISA and competitive ELISA assays. Specific conditions for reactivity and signal detection should be optimized by the end user.</p> <p>ELISA Dilution: 1:2,000 - 1:10,000</p> <p>Western Blot Dilution: 1:500 - 1:2,500</p> |
| Restrictions: | For Research Use only |

Handling

| | |
|----------------|---|
| Format: | Liquid |
| Concentration: | 1.0 mg/mL |
| Buffer: | Buffer: 0.05 M Tris Chloride, 0.15M Sodium Chloride, 0.001M Magnesium Chloride, 0.0001M |

Handling

Zinc Chloride, 50 % (v/v) Glycerol, pH 8.0

Stabilizer: 10 mg/mL Bovine Serum Albumin (BSA) - Immunoglobulin and Protease free

Preservative: 0.01 % (w/v) Sodium Azide

Preservative: Sodium azide

Precaution of Use: This product contains Sodium azide: a POISONOUS AND HAZARDOUS SUBSTANCE which should be handled by trained staff only.

Handling Advice: **Do not freeze!** Freezing alkaline phosphatase conjugates will result in a substantial loss of enzymatic activity.

Do not add Sodium azide.

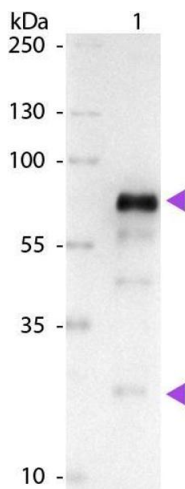
Dilute only prior to immediate use

Each reagent is stable for the period shown on the bottle label if stored as directed.

Storage: 4 °C

Expiry Date: 12 months

Images



Western Blotting

Image 1. Western Blot of Alkaline Phosphatase Conjugated Goat anti-Chicken IgG Pre-Adsorbed secondary antibody. Lane 1: Chicken IgG. Lane 2: None. Load: 50 ng per lane. Primary antibody: None. Secondary antibody: Alkaline Phosphatase goat secondary antibody at 1:1,000 for 60 min at RT. Block: ABIN925618 for 30 min at RT. Predicted/Observed size: 25 & 72 kDa, 25 & 72 kDa for Chicken IgG. Other band(s): None.



Western Blotting

Image 2. Western Blot of Anti-Chicken IgG (H&L) (GOAT) Antibody (Min X Bv Gt GP Ham Hs Hu Ms Rb Rt & Sh Serum Proteins) . Lane M: 3 μ l Molecular Ladder. Lane 1: Chicken IgG whole molecule . Lane 2: Chicken IgG F(c) Fragment . Lane 3: Chicken IgG Fab Fragment . Lane 4: Chicken IgM Whole Molecule . Lane 5: Chicken Serum . All samples were reduced. Load: 50 ng per lane. Block: ABIN925618 for 30 min at RT. Primary Antibody: Anti-Chicken IgG (H&L) (GOAT) Antibody (Min X Bv Gt GP Ham Hs Hu Ms Rb Rt & Sh Serum Proteins) 1:3,000 for 60 min at RT. Secondary antibody: Anti-Goat IgG (DONKEY) Peroxidase Conjugated Antibody 1:40,000 in ABIN925618 for 30 min at RT. Predicted/Observed Size: 25 and 72 kDa for Chicken IgG and Serum, 25 kDa for F(c) and Fab, 75 kDa for IgM. Chicken F(c) migrates slightly higher.