

Datasheet for ABIN101033

Rabbit anti-Chicken IgG (Heavy & Light Chain) Antibody - Preadsorbed



[Go to Product page](#)

2 Images

Overview

Quantity:	10 mg
Target:	IgG
Binding Specificity:	Heavy & Light Chain
Reactivity:	Chicken
Host:	Rabbit
Clonality:	Polyclonal
Application:	ELISA, Immunohistochemistry (IHC), Western Blotting (WB)

Product Details

Immunogen:	Immunogen: Anti-Chicken IgG (H&L) was produced by repeated immunization with Chicken IgG whole molecule in rabbit. Immunogen Type: Native Protein
Isotype:	IgG
Specificity:	IgG (H&L)
Cross-Reactivity:	Chicken
Characteristics:	Anti-Chicken IgG antibody generated in rabbit detects specifically chicken IgG. This secondary antibody anti-Chicken is ideal for investigators who routinely perform ELISA, Sandwich ELISA, titration assays, western-blot, immunoprecipitation and more generally immunoassays. Concentration Definition: by UV absorbance at 280 nm
Purification:	Preadsorption: immunoaffinity chromatography using Chicken IgG coupled to agarose beads
Sterility:	Sterile filtered

Target Details

Target:	IgG
Abstract:	IgG Products
Target Type:	Antibody
Background:	<p>Synonyms: Rabbit anti-Chicken IgG Antibody, Chicken Secondary Antibody</p> <p>Background: Anti-Chicken IgG Antibody generated in rabbit detects chicken IgG. Secreted as part of the adaptive immune response by plasma B cells, immunoglobulin G constitutes 75 % of serum immunoglobulins. Immunoglobulin G binds to viruses, bacteria, as well as fungi and facilitates their destruction or neutralization via agglutination (and thereby immobilizing them), activation of the complement cascade, and opsinization for phagocytosis. The whole IgG molecule possesses both the F(c) region, recognized by high-affinity Fc receptor proteins, as well as the F(ab) region possessing the epitope-recognition site. Both heavy and light chains of the antibody molecule are present.</p>

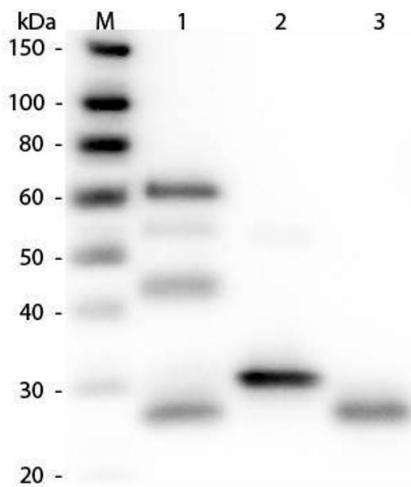
Application Details

Application Notes:	<p>Immunohistochemistry Dilution: 1:1,000 - 1:5,000</p> <p>Application Note: Anti-Chicken IgG (H&L) is suitable for use in immunoelectrophoresis, western-blot, competitive western-blot, ELISA and competitive ELISA assays. Specific conditions for reactivity and signal detection should be optimized by the end user.</p> <p>ELISA Dilution: 1:200,000 - 1:400,000</p> <p>Western Blot Dilution: 1:10,000 - 1:30,000</p>
--------------------	---

Restrictions:	For Research Use only
---------------	-----------------------

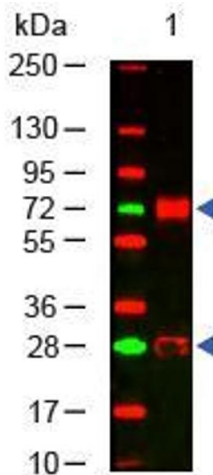
Handling

Format:	Liquid
Concentration:	10 mg/mL
Buffer:	<p>Buffer: 0.02 M Potassium Phosphate, 0.15 M Sodium Chloride, pH 7.2</p> <p>Stabilizer: None</p> <p>Preservative: 0.01 % (w/v) Sodium Azide</p>
Preservative:	Sodium azide
Precaution of Use:	This product contains Sodium azide: a POISONOUS AND HAZARDOUS SUBSTANCE which should be handled by trained staff only.
Storage:	4 °C, -20 °C



Western Blotting

Image 1. Western Blot of Anti-Chicken IgG (H&L) (RABBIT) Antibody . Lane M: 3 μ l Molecular Ladder. Lane 1: Chicken IgG whole molecule . Lane 2: Chicken IgG F(c) Fragment . Lane 3: Chicken IgG Fab Fragment . All samples were reduced. Load: 50 ng per lane. Block: ABIN925618 for 30 min at RT. Primary Antibody: Anti-Chicken IgG (H&L) (RABBIT) Antibody 1:3,000 for 60 min at RT. Secondary antibody: Anti-Rabbit IgG (GOAT) Peroxidase Conjugated Antibody 1:40,000 in ABIN925618 for 30 min at RT. Predicted/Observed Size: 25 and 72 kDa for Chicken IgG, 25 kDa for F(c) and Fab. Chicken F(c) migrates slightly higher.



Western Blotting

Image 2. Western Blot of Rabbit anti-Chicken IgG Antibody. Lane 1: Chicken IgG. Lane 2: None. Load: 100 ng per lane. Primary antibody: Chicken IgG antibody at 1:1000 for overnight at 4°C. Secondary antibody: 649 rabbit secondary antibody at 1:20,000 for 30 min at RT. Block: 5% BLOTTO 30 min at RT. Predicted/Observed size: 72 and 28 kDa, 72 and 28 kDa for Chicken IgG. Other band(s): none.