

Datasheet for ABIN101059

## Rabbit anti-Chicken IgG (F(ab')<sub>2</sub> Region) Antibody - Preadsorbed



[Go to Product page](#)

### 1 Image

#### Overview

Quantity:	5 mg
Target:	IgG
Binding Specificity:	F(ab') <sub>2</sub> Region
Reactivity:	Chicken
Host:	Rabbit
Clonality:	Polyclonal
Application:	ELISA, Immunohistochemistry (IHC), Western Blotting (WB)

#### Product Details

Immunogen:	Immunogen: Chicken IgG F(ab') <sub>2</sub> fragment
Isotype:	IgG
Specificity:	IgG F(ab') <sub>2</sub>
Characteristics:	Concentration Definition: by UV absorbance at 280 nm
Purification:	Preadsorption: Solid phase absorption
Sterility:	Sterile filtered

#### Target Details

Target:	IgG
Abstract:	<a href="#">IgG Products</a>
Target Type:	Antibody

## Target Details

---

Background: Synonyms: rabbit anti Chicken IgG F(ab')<sub>2</sub> Antibody, rabbit anti Chicken IgG Fab<sub>2</sub> Antibody  
Background: Anti-Chicken IgG F(ab')<sub>2</sub> Antibody generated in rabbit is a proteolytic fragment of immunoglobulin G (IgG) obtained by limited digestion with the enzyme pepsin under controlled conditions of temperature, time and pH . F(ab')<sub>2</sub> Molecules lack the Fc portion of IgG and therefore receptors that bind Chicken IgG F(c) will not bind Chicken IgG F(ab')<sub>2</sub> Molecules.

## Application Details

---

Application Notes: Immunohistochemistry Dilution: 1:1,000 - 1:5,000  
Application Note: Anti-Chicken IgG F(ab')<sub>2</sub> antibody is suitable for ELISA, western blot, and immunohistochemistry, as well as other assays requiring lot-to-lot consistency.  
ELISA Dilution: 1:20,000 - 1:100,000  
Western Blot Dilution: 1:2,000 - 1:10,000

Restrictions: For Research Use only

## Handling

---

Format: Liquid

Concentration: 5.0 mg/mL

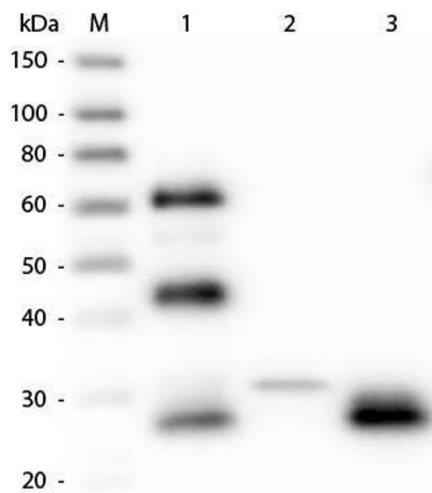
Buffer: Buffer: 0.02 M Potassium Phosphate, 0.15 M Sodium Chloride, pH 7.2  
Stabilizer: None  
Preservative: 0.01 % (w/v) Sodium Azide

Preservative: Sodium azide

Precaution of Use: This product contains Sodium azide: a POISONOUS AND HAZARDOUS SUBSTANCE which should be handled by trained staff only.

Storage: 4 °C, -20 °C

Expiry Date: 12 months



### Western Blotting

**Image 1.** Western Blot of Anti-Chicken IgG F(ab)<sub>2</sub> (RABBIT) Antibody . Lane M: 3  $\mu$ l Molecular Ladder. Lane 1: Chicken IgG whole molecule . Lane 2: Chicken IgG F(c) Fragment . Lane 3: Chicken IgG F(ab) Fragment . All samples were reduced. Load: 50 ng per lane. Block: ABIN925618 for 30 min at RT. Primary Antibody: Anti-Chicken IgG F(ab)<sub>2</sub> (RABBIT) Antibody 1:5,000 for 60 min at RT. Secondary antibody: Anti-Rabbit IgG (GOAT) Peroxidase Conjugated Antibody 1:40,000 in ABIN925618 for 30 min at RT. Predicted/Obsevered Size: 25 and 72 kDa for Chicken IgG, 25 kDa for F(c) and F(ab). Chicken F(c) migrates slightly higher.