



Datasheet for ABIN101060

Rabbit anti-Chicken IgG (F(ab')₂ Region) Antibody (Alkaline Phosphatase (AP)) - Preadsorbed



[Go to Product page](#)

2 Images

Overview

Quantity:	1 mg
Target:	IgG
Binding Specificity:	F(ab') ₂ Region
Reactivity:	Chicken
Host:	Rabbit
Clonality:	Polyclonal
Conjugate:	Alkaline Phosphatase (AP)
Application:	ELISA, Immunohistochemistry (IHC), Western Blotting (WB)

Product Details

Immunogen:	Immunogen: Chicken IgG F(ab') ₂ fragment
Isotype:	IgG
Specificity:	IgG F(ab') ₂
Characteristics:	Concentration Definition: by UV absorbance at 280 nm
Purification:	Preadsorption: Solid phase absorption
Sterility:	Sterile filtered

Target Details

Target:	IgG
Abstract:	IgG Products

Target Details

Target Type:	Antibody
Background:	<p>Synonyms: rabbit anti-Chicken IgG F(ab')₂ Antibody Alkaline Phosphatase Conjugation, rabbit anti-Chicken IgG Fab₂ Fragment Alk Phos Conjugated Antibody</p> <p>Background: Anti-Chicken IgG F(ab')₂ Antibody generated in rabbit is a proteolytic fragment of immunoglobulin G (IgG) obtained by limited digestion with the enzyme pepsin under controlled conditions of temperature, time and pH . F(ab')₂ Molecules lack the Fc portion of IgG and therefore receptors that bind Chicken IgG F(c) will not bind Chicken IgG F(ab')₂ Molecules.</p>

Application Details

Application Notes:	<p>Immunohistochemistry Dilution: 1:200 - 1:1,000</p> <p>Application Note: Anti-Chicken IgG F(ab')₂ antibody is suitable for immunoblotting (western or dot blot), ELISA, immunoelectron microscopy and immunohistochemistry as well as other antibody based enzymatic assays requiring lot-to-lot consistency.</p> <p>ELISA Dilution: 1:3,500</p> <p>Western Blot Dilution: 1:500 - 1:2,500</p>
--------------------	---

Restrictions:	For Research Use only
---------------	-----------------------

Handling

Format:	Liquid
Concentration:	1.0 mg/mL
Buffer:	<p>Buffer: 0.05 M Tris Chloride, 0.15M Sodium Chloride, 0.001M Magnesium Chloride, 0.0001M Zinc Chloride, 50 % (v/v) Glycerol, pH 8.0</p> <p>Stabilizer: 10 mg/mL Bovine Serum Albumin (BSA) - Immunoglobulin and Protease free</p> <p>Preservative: 0.01 % (w/v) Sodium Azide</p>
Preservative:	Sodium azide
Precaution of Use:	This product contains Sodium azide: a POISONOUS AND HAZARDOUS SUBSTANCE which should be handled by trained staff only.
Handling Advice:	<p>Do not freeze! Freezing alkaline phosphatase conjugates will result in a substantial loss of enzymatic activity.</p> <p>Do not add Sodium azide.</p> <p>Dilute only prior to immediate use</p> <p>Each reagent is stable for the period shown on the bottle label if stored as directed.</p>

Handling

Storage: 4 °C

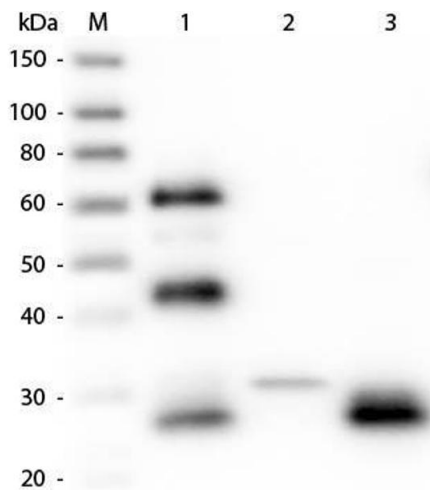
Expiry Date: 12 months

Images



Dot Blot

Image 1. Dot Blot of Rabbit anti-Chicken IgG Fab2 Antibody Alkaline Phosphatase Conjugated. Antigen: Chicken IgG. Load: Lane 1 - 200 ng Lane 2 - 66.7 ng Lane 3 - 22.2 ng Lane 4 - 7.41 ng Lane 5 - 2.47 ng. Primary antibody: n/a. Secondary antibody: Rabbit anti-Chicken IgG Fab2 Antibody Alkaline Phosphatase Conjugated at 1:1,000 for 1 HR at RT. Block: ABIN925618 for 1 HR at RT.



Western Blotting

Image 2. Western Blot of Unconjugated Anti-Chicken IgG F(ab')₂ (RABBIT) Antibody . Lane M: 3 µl Molecular Ladder. Lane 1: Chicken IgG whole molecule . Lane 2: Chicken IgG F(c) Fragment . Lane 3: Chicken IgG F(ab) Fragment . All samples were reduced. Load: 50 ng per lane. Block: ABIN925618 for 30 min at RT. Primary Antibody: Anti-Chicken IgG F(ab')₂ (RABBIT) Antibody 1:5,000 for 60 min at RT. Secondary antibody: Anti-Rabbit IgG (GOAT) Peroxidase Conjugated Antibody 1:40,000 in ABIN925618 for 30 min at RT. Predicted/Observed Size: 25 and 72 kDa for Chicken IgG, 25 kDa for F(c) and F(ab). Chicken F(c) migrates slightly higher.