



[Go to Product page](#)

Datasheet for ABIN101104

Rabbit anti-Dog IgG (F(ab')₂ Region) Antibody (HRP)

1 Image

Overview

Quantity:	2 mg
Target:	IgG
Binding Specificity:	F(ab') ₂ Region
Reactivity:	Dog
Host:	Rabbit
Clonality:	Polyclonal
Conjugate:	HRP
Application:	Immunoassay (IA)

Product Details

Immunogen:	Dog IgG fragment
Isotype:	IgG
Specificity:	IgG F(ab') ₂
Characteristics:	Concentration Definition: by UV absorbance at 280 nm

Target Details

Target:	IgG
Abstract:	IgG Products
Target Type:	Antibody

Application Details

Application Notes: Optimal working dilutions should be determined experimentally by the investigator.

Restrictions: For Research Use only

Handling

Format: Lyophilized

Reconstitution: Restore with deionized water (or equivalent)

Concentration: 2.0 mg/mL

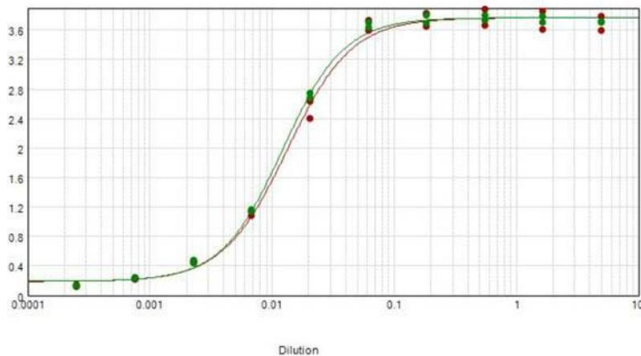
Buffer: 0.02 M Potassium Phosphate, 0.15 M Sodium Chloride, pH 7.2

Preservative: Gentamicin sulfate

Handling Advice: Do NOT add Sodium Azide! Use of Sodium Azide will inhibit enzyme activity of horseradish peroxidase.

Storage: 4 °C

Images



ELISA

Image 1. ELISA results of purified Rabbit Anti-Dog IgG F(ab')₂ Antibody tested against purified Dog IgG F(ab')₂. Each well was coated in duplicate with 1.0 µg of Dog IgG F(ab')₂ (red line). The starting dilution of antibody was 5µ g/ml and the X-axis represents the Log₁₀ of a 3-fold dilution. This titration is a 4-parameter curve fit where the IC₅₀ is defined as the titer of the antibody. Assay performed using TMB-1000 substrate.