

Datasheet for ABIN101205

**Rabbit anti-Goat IgG (Heavy & Light Chain) Antibody -
Preadsorbed**[Go to Product page](#)**1** Image

Overview

Quantity:	2 mg
Target:	IgG
Binding Specificity:	Heavy & Light Chain
Reactivity:	Goat
Host:	Rabbit
Clonality:	Polyclonal
Application:	ELISA, Immunohistochemistry (IHC), Western Blotting (WB), Lateral Flow (LF)

Product Details

Immunogen:	Immunogen: Goat IgG whole molecule
Isotype:	IgG
Specificity:	IgG (H&L)
Characteristics:	Concentration Definition: by UV absorbance at 280 nm
Purification:	Preadsorption: Solid phase absorption
Sterility:	Sterile filtered

Target Details

Target:	IgG
Abstract:	IgG Products
Target Type:	Antibody

Target Details

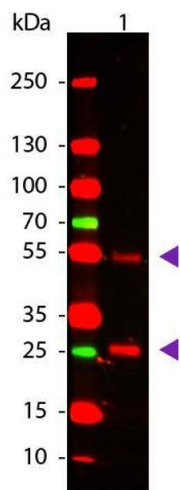
Background:	Synonyms: rabbit anti-GOAT IgG Antibody, rabbit anti-goat IgG Background: Secondary Antibodies are available in a variety of formats and conjugate types. When choosing a secondary antibody product, consideration must be given to species and immunoglobulin specificity, conjugate type, fragment and chain specificity, level of cross-reactivity, and host-species source and fragment composition.
-------------	--

Application Details

Application Notes:	Immunohistochemistry Dilution: 1:1,000 - 1:5,000 Application Note: Anti-Goat IgG antibody is suitable for ELISA, western blot, and immunohistochemistry, as well as other assays requiring lot-to-lot consistency. ELISA Dilution: 1:50,000 - 1:100,000 Western Blot Dilution: 1:10,000 - 1:60,000
Comment:	Secondary Antibodies are available in a variety of formats and conjugate types. When choosing a secondary antibody product, consideration must be given to species and immunoglobulin specificity, conjugate type, fragment and chain specificity, level of cross-reactivity, and host-species source and fragment composition.
Restrictions:	For Research Use only

Handling

Format:	Liquid
Concentration:	2.1 mg/mL
Buffer:	Buffer: 0.02 M Potassium Phosphate, 0.15 M Sodium Chloride, pH 7.2 Stabilizer: None Preservative: 0.01 % (w/v) Sodium Azide
Preservative:	Sodium azide
Precaution of Use:	This product contains Sodium azide: a POISONOUS AND HAZARDOUS SUBSTANCE which should be handled by trained staff only.
Storage:	4 °C,-20 °C
Expiry Date:	12 months



Western Blotting

Image 1. Western Blot of Rabbit anti-Goat IgG Antibody. Lane 1: Goat IgG. Lane 2: None. Load: 50 ng per lane. Primary antibody: Goat antibody at 1,000 overnight at 4°C. Secondary antibody: 649 rabbit secondary antibody at 1:20,000 for 30 min at RT. Block: ABIN925618 for 30 min at RT. Predicted/Observed size: 28 & 55 kDa, 28 & 55 kDa for Goat IgG. Other band(s): None