

Datasheet for ABIN101367

## Rabbit anti-Golden Syrian Hamster IgG (Heavy & Light Chain) Antibody



[Go to Product page](#)

### 1 Image

#### Overview

Quantity:	2 mg
Target:	IgG
Binding Specificity:	Heavy & Light Chain
Reactivity:	Golden Syrian Hamster
Host:	Rabbit
Clonality:	Polyclonal
Application:	ELISA, Immunohistochemistry (IHC), Western Blotting (WB)

#### Product Details

Purpose:	Golden Syrian Hamster IgG (H&L) Antibody
Immunogen:	Optional[Immunogen]: Golden Syrian Hamster IgG whole molecule
Isotype:	IgG
Cross-Reactivity (Details):	Assay by immunoelectrophoresis resulted in a single precipitin arc against anti-Rabbit Serum, Golden Syrian Hamster IgG and Golden Syrian Hamster Serum. Greatly reduced reactivity will occur against Armenian Hamster IgG.
Characteristics:	Anti-Golden Syrian Hamster IgG F(ab') <sub>2</sub> Rhodamine Antibody generated in rabbit is a proteolytic fragment of immunoglobulin G (IgG) obtained by limited digestion with the enzyme pepsin under controlled conditions of temperature, time and pH. F(ab') <sub>2</sub> Molecules lack the Fc portion of IgG and therefore receptors that bind Golden Syrian Hamster IgG F(c) will not bind Golden Syrian Hamster IgG F(ab') <sub>2</sub> Molecules. Secondary Antibodies are available in a variety of formats and conjugate types. When choosing a secondary antibody product, consideration

## Product Details

	must be given to species and immunoglobulin specificity, conjugate type, fragment and chain specificity, level of cross-reactivity, and host-species source and fragment composition.
Purification:	This product was prepared from monospecific antiserum by immunoaffinity chromatography using Hamster IgG coupled to agarose beads.
Sterility:	Sterile filtered

## Target Details

Target:	IgG
Abstract:	<a href="#">IgG Products</a>
Target Type:	Antibody
Background:	<p>Secreted as part of the adaptive immune response by plasma B cells, immunoglobulin G constitutes 75 % of serum immunoglobulins. Immunoglobulin G binds to viruses, bacteria, as well as fungi and facilitates their destruction or neutralization via agglutination (and thereby immobilizing them), activation of the complement cascade, and opsonization for phagocytosis. The whole IgG molecule possesses both the F(c) region, recognized by high-affinity Fc receptor proteins, as well as the F(ab) region possessing the epitope-recognition site. Both heavy and light chains of the antibody molecule are present. Secondary Antibodies are available in a variety of formats and conjugate types. When choosing a secondary antibody product, consideration must be given to species and immunoglobulin specificity, conjugate type, fragment and chain specificity, level of cross-reactivity, and host-species source and fragment composition.</p>

## Application Details

Application Notes:	Application Note: Anti-Golden Syrian Hamster IgG antibody has been tested by ELISA and is suitable for western blot and immunohistochemistry, as well as other assays requiring lot-to-lot consistency. Immunohistochemistry Dilution: 1:1,000 - 1:5,000 Western Blot Dilution: 1:2,000 - 1:10,000 ELISA Dilution: 1:38,600 - 1:58,600 Other: User Optimized
Restrictions:	For Research Use only

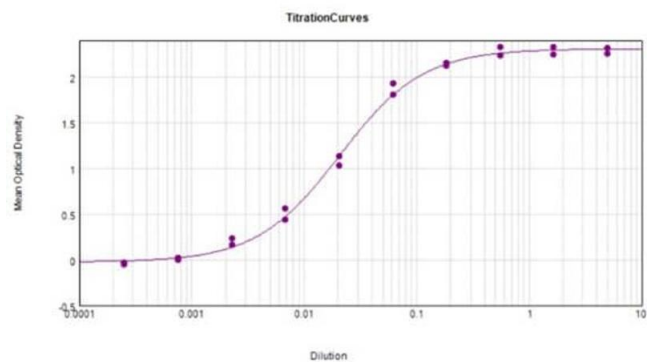
## Handling

Format:	Liquid
Concentration:	2.1 mg/mL

Handling

Buffer:	Buffer: 0.02 M Potassium Phosphate, 0.15 M Sodium Chloride, pH 7.2 Stabilizer: None , Preservative:0.01 % (w/v) Sodium Azide
Preservative:	Sodium azide
Precaution of Use:	This product contains Sodium azide: a POISONOUS AND HAZARDOUS SUBSTANCE which should be handled by trained staff only.
Storage:	4 °C,-20 °C
Storage Comment:	Store vial at 4° C prior to opening. This product is stable for several weeks at 4° C as an undiluted liquid. Dilute only prior to immediate use. For extended storage aliquot contents and freeze at -20° C or below. Avoid cycles of freezing and thawing.
Expiry Date:	12 months

Images



ELISA

**Image 1.** ELISA Results of Purified Rabbit Anti-Golden Syrian Hamster IgG Antibody tested against purified Golden Syrian Hamster IgG. Each well was coated in duplicate with 1.0 µg of Golden Syrian Hamster IgG (p/n 007-0102). The starting dilution of antibody was 5 µg/mL and the X-axis represents the Log10 of a 3-fold dilution. This titration is a 4-parameter curve fit where the IC50 is defined as the titer of the antibody. Assay performed using Donkey Anti-Rabbit IgG mx8 HRP conjugate (p/n 611-703-127) and TMB substrate (p/n TMBE-1000).