



Datasheet for ABIN101419

Rabbit anti-Horse IgG (Whole Molecule) Antibody (HRP)



[Go to Product page](#)

1 Image

Overview

Quantity:	2 mg
Target:	IgG
Binding Specificity:	Whole Molecule
Reactivity:	Horse
Host:	Rabbit
Clonality:	Polyclonal
Conjugate:	HRP
Application:	ELISA, Western Blotting (WB)

Product Details

Immunogen:	Anti-Horse IgG whole molecule was produced by repeated immunization with Horse IgG whole molecule in rabbit.
Isotype:	IgG
Specificity:	IgG (H&L)
Characteristics:	<p>Anti-Horse IgG whole molecule antibody generated in rabbit detects specifically Horse IgG whole molecule. This secondary antibody anti-Horse is ideal for investigators who routinely perform ELISA, Sandwich ELISA, titration assays, western-blot, immunoprecipitation and more generally immunoassays.</p> <p>Concentration Definition: by UV absorbance at 280 nm</p>

Target Details

Target:	IgG
Abstract:	IgG Products
Target Type:	Antibody
Background:	Synonyms: Horse Antibody, Rb-a-Horse IgG, Horse Antibody in Rabbit, Horse Secondary Antibody

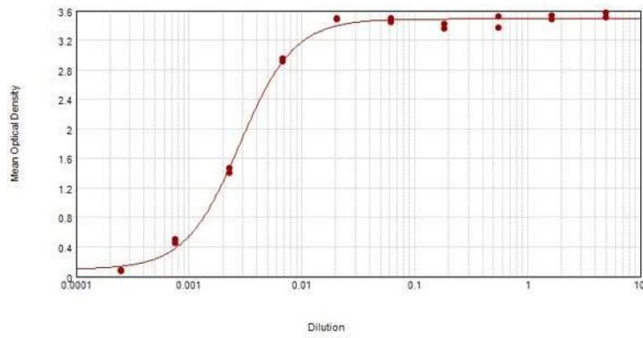
Application Details

Application Notes:	Anti-Horse IgG whole molecule is suitable for use in immunoelectrophoresis, western-blot, competitive western-blot, ELISA and competitive ELISA assays. Specific conditions for reactivity and signal detection should be optimized by the end user.
Restrictions:	For Research Use only

Handling

Format:	Lyophilized
Reconstitution:	Restore with deionized water (or equivalent)
Concentration:	2.0 mg/mL
Buffer:	0.02 M Potassium Phosphate, 0.15 M Sodium Chloride, pH 7.2
Preservative:	Gentamicin sulfate
Handling Advice:	Do NOT add Sodium Azide! Use of Sodium Azide will inhibit enzyme activity of horseradish peroxidase.
Storage:	4 °C

Anti-Horse IgG Sensitivity



ELISA

Image 1. ELISA results of purified Rabbit anti-Horse IgG Antibody Peroxidase Conjugated tested against purified Horse IgG. Each well was coated in duplicate with 1.0 μg of Horse IgG. The starting dilution of antibody was 5 $\mu\text{g}/\text{ml}$ and the X-axis represents the Log10 of a 3-fold dilution. This titration is a 4-parameter curve fit where the IC50 is defined as the titer of the antibody. Assay performed using 3% fish gelatin as blocking buffer and TMB substrate p/n TMBE-1000.