

Datasheet for ABIN101420

## Rabbit anti-Horse IgG (Heavy & Light Chain) Antibody (Texas Red (TR)) - Preadsorbed



[Go to Product page](#)

### 1 Image

#### Overview

Quantity:	2 mg
Target:	IgG
Binding Specificity:	Heavy & Light Chain
Reactivity:	Horse
Host:	Rabbit
Clonality:	Polyclonal
Conjugate:	Texas Red (TR)
Application:	Flow Cytometry (FACS), FLISA, Fluorescence Microscopy (FM)

#### Product Details

Immunogen:	Immunogen: Horse IgG whole molecule
Isotype:	IgG
Specificity:	IgG (H&L)
Characteristics:	Concentration Definition: by UV absorbance at 280 nm
Purification:	Preadsorption: immunoaffinity chromatography using Horse IgG coupled to agarose beads
Labeling Ratio:	1.7

#### Target Details

Target:	IgG
Abstract:	<a href="#">IgG Products</a>

## Target Details

---

Target Type:	Antibody
Background:	<p>Synonyms: Rabbit Anti-Horse IgG Texas Red™ Conjugated Antibody, Rabbit Anti Horse IgG Antibody Texas Red™ Conjugation</p> <p>Background: Anti-Horse IgG Texas Red Antibody generated in rabbit detects horse IgG. Secreted as part of the adaptive immune response by plasma B cells, immunoglobulin G constitutes 75 % of serum immunoglobulins. Immunoglobulin G binds to viruses, bacteria, as well as fungi and facilitates their destruction or neutralization via agglutination (and thereby immobilizing them), activation of the compliment cascade, and opsinization for phagocytosis. The whole IgG molecule possesses both the F(c) region, recognized by high-affinity Fc receptor proteins, as well as the F(ab) region possessing the epitope-recognition site. Both heavy and light chains of the antibody molecule are present. Secondary Antibodies are available in a variety of formats and conjugate types. When choosing a secondary antibody product, consideration must be given to species and immunoglobulin specificity, conjugate type, fragment and chain specificity, level of cross-reactivity, and host-species source and fragment composition.</p>

## Application Details

---

Application Notes:	<p>Application Note: This product is designed for immunofluorescence microscopy, fluorescence based plate assays (FLISA) and fluorescent western blotting. This product is also suitable for multiplex analysis, including multicolor imaging, utilizing various commercial platforms.</p> <p>FLISA Dilution: 1:10,000 - 1:50,000</p> <p>Flow Cytometry Dilution: 1:500 - 1:2,500</p> <p>IF Microscopy Dilution: 1:1,000 - 1:5,000</p>
--------------------	--

Comment:	Texas Red™ is a registered trademark of Molecular Probes Inc.
----------	---

Restrictions:	For Research Use only
---------------	-----------------------

## Handling

---

Format:	Lyophilized
Reconstitution:	<p>Reconstitution Volume: 1.0 mL</p> <p>Reconstitution Buffer: Restore with deionized water (or equivalent)</p>
Concentration:	2.0 mg/mL
Buffer:	<p>Buffer: 0.02 M Potassium Phosphate, 0.15 M Sodium Chloride, pH 7.2</p> <p>Stabilizer: 10 mg/mL Bovine Serum Albumin (BSA) - Immunoglobulin and Protease free</p>

## Handling

Preservative: 0.01 % (w/v) Sodium Azide

Preservative: Sodium azide

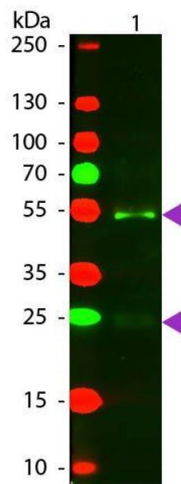
Precaution of Use: This product contains Sodium azide: a POISONOUS AND HAZARDOUS SUBSTANCE which should be handled by trained staff only.

Handling Advice: Product is photosensitive and should be protected from light.

Storage: RT, 4 °C, -20 °C

Expiry Date: 12 months

## Images



### Western Blotting

**Image 1.** Western Blot of Texas Rabbit Anti-Horse IgG secondary antibody. Lane 1: Horse IgG. Lane 2: None. Load: 50 ng per lane. Primary antibody: None. Secondary antibody: Texas rabbit secondary antibody at 1:1,000 for 60 min at RT. Blocking: ABIN925618 for 30 min at RT. Predicted/Observed size: 25 & 55 kDa, 25 & 55 kDa for Horse IgG. Other band(s): None.