

Datasheet for ABIN101472

Chicken anti-Human IgG (Heavy & Light Chain) Antibody (HRP)[Go to Product page](#)**1** Image

Overview

Quantity:	1 mg
Target:	IgG
Binding Specificity:	Heavy & Light Chain
Reactivity:	Human
Host:	Chicken
Clonality:	Polyclonal
Conjugate:	HRP
Application:	ELISA, Western Blotting (WB)

Product Details

Immunogen:	Human IgG whole molecule
Isotype:	IgG
Specificity:	IgG (H&L), Anti-Human IgG (H&L) Antibody Peroxidase Conjugated antibody detects human IgG.
Characteristics:	Concentration Definition: by UV absorbance at 280 nm

Target Details

Target:	IgG
Abstract:	IgG Products
Target Type:	Antibody

Target Details

Background: Synonyms: anti-human immunoglobulin G

Application Details

Application Notes: Human IgG (H&L) Antibody is peroxidase conjugated and is suitable for immunoassays where specificity to the immunoglobulin heavy and or light chain regions is desired. Antibody has been tested by ELISA, western blot immunoblot, and immunohistochemistry. Optimal concentrations in immunoassays should be determined by the researcher.

Restrictions: For Research Use only

Handling

Format: Lyophilized

Reconstitution: Restore with deionized water (or equivalent)

Concentration: 1.0 mg/mL

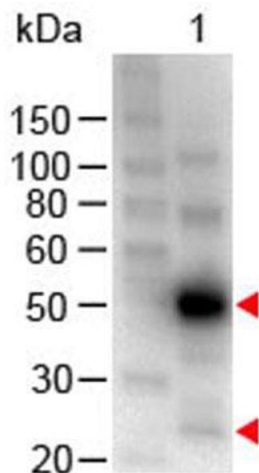
Buffer: 0.02 M Potassium Phosphate, 0.15 M Sodium Chloride, pH 7.2

Preservative: Gentamicin sulfate

Handling Advice: Do NOT add Sodium Azide! Use of Sodium Azide will inhibit enzyme activity of horseradish peroxidase.

Storage: 4 °C

Images



Western Blotting

Image 1. Western Blot of Chicken anti-Human IgG (H&L) Antibody Peroxidase Conjugated. Lane 1: Human IgG. Load: 100 ng per lane. Secondary antibody: Human IgG (H&L) Antibody Peroxidase Conjugated at 1:1,000 for 60 min at RT. Block: ABIN925618 for 30 min at RT. Predicted/Observed size: 55 and 28 kDa, 55 and 28 kDa.