

Datasheet for ABIN101511

Goat anti-Goat IgG (Heavy & Light Chain) Antibody (Alkaline Phosphatase (AP)) - Preadsorbed[Go to Product page](#)**2** Images

Overview

Quantity:	1 mg
Target:	IgG
Binding Specificity:	Heavy & Light Chain
Reactivity:	Human, Goat
Host:	Goat
Clonality:	Polyclonal
Conjugate:	Alkaline Phosphatase (AP)
Application:	ELISA, Immunohistochemistry (IHC), Western Blotting (WB)

Product Details

Immunogen:	Immunogen: Human IgG whole molecule
Isotype:	IgG
Specificity:	IgG (H&L)
Characteristics:	Anti-Human IgG (H&L) detects human Immunoglobulin G (IgG) antibody isotype. Concentration Definition: by UV absorbance at 280 nm
Purification:	Preadsorption: immunoaffinity chromatography using Human IgG coupled to agarose beads
Sterility:	Sterile filtered

Target Details

Target:	IgG
---------	-----

Target Details

Abstract:	IgG Products
Target Type:	Antibody
Background:	<p>Synonyms: goat anti-Human IgG Alkaline Phosphatase Conjugation, goat anti-Human IgG ALP conjugate, goat anti-human IgG Alk Phos conjugated antibody</p> <p>Background: Anti-Human IgG (H&L) Alkaline Phosphatase generated in goat detects human Immunoglobulin G (IgG), both heavy and light chains of the antibody molecule are present. It is a protein complex composed of four peptide chains - two identical heavy chains and two identical light chains arranged in a Y-shape typical of antibody monomers. Each IgG has two antigen binding sites. Representing approximately 75 % of serum immunoglobulins in humans, IgG is the most abundant antibody isotype found in the circulation. IgG molecules are synthesized and secreted by plasma B cells. Secondary Antibodies are available in a variety of formats and conjugate types. When choosing a secondary antibody product, consideration must be given to species and immunoglobulin specificity, conjugate type, fragment and chain specificity, level of cross-reactivity, and host-species source and fragment composition.</p>

Application Details

Application Notes:	<p>Immunohistochemistry Dilution: 1:200 - 1:1,000</p> <p>Application Note: Anti-Human IgG (H&L) Alkaline Phosphatase Antibody is suitable for ELISA, Western Blot and Immunohistochemistry applications. Antibody should be optimized by end user for specific reactive conditions.</p> <p>ELISA Dilution: 1:4,500</p> <p>Western Blot Dilution: 1:500 - 1:2,500</p>
Restrictions:	For Research Use only

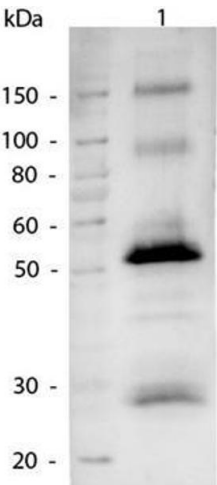
Handling

Format:	Liquid
Concentration:	1.0 mg/mL
Buffer:	<p>Buffer: 0.05 M Tris Chloride, 0.15M Sodium Chloride, 0.001M Magnesium Chloride, 0.0001M Zinc Chloride, 50 % (v/v) Glycerol, pH 8.0</p> <p>Stabilizer: 10 mg/mL Bovine Serum Albumin (BSA) - Immunoglobulin and Protease free</p> <p>Preservative: 0.01 % (w/v) Sodium Azide</p>
Preservative:	Sodium azide

Handling

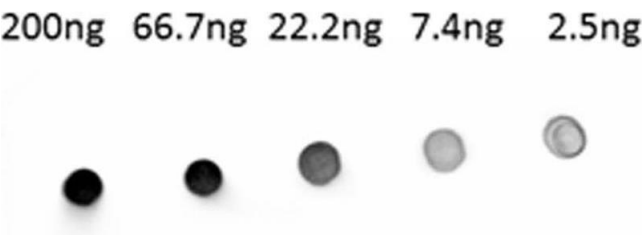
Precaution of Use:	This product contains Sodium azide: a POISONOUS AND HAZARDOUS SUBSTANCE which should be handled by trained staff only.
Handling Advice:	Do not freeze! Freezing alkaline phosphatase conjugates will result in a substantial loss of enzymatic activity. Do not add Sodium azide. Dilute only prior to immediate use Each reagent is stable for the period shown on the bottle label if stored as directed.
Storage:	4 °C
Expiry Date:	12 months

Images



Western Blotting

Image 1. Western Blot of Alkaline Phosphatase conjugated Goat anti-Human IgG antibody. Lane 1: Human IgG. Lane 2: none. Load: 50 ng per lane. Primary antibody: none. Secondary antibody: Alkaline Phosphatase Human secondary antibody at 1:1,000 o/n at 4°C. Block: ABIN925618 for 30 min at RT. Reaction visualized using alkaline phosphatase for 30 seconds at RT. Predicted/Observed size: 50kDa, 25kDa for Human IgG.



Dot Blot

Image 2. Dot Blot of Alkaline Phosphatase conjugated Goat anti-Human IgG antibody. Antigen: Human IgG. Load: Lane 1 - 200ng Lane 2 - 66.7ng Lane 3 - 22.2ng Lane 4 - 7.4ng Lane 5 - 2.5ng. Primary antibody: none. Secondary antibody: Alkaline Phosphatase conjugated Goat anti-Human IgG antibody at 1:1,000 for 60 min at RT. Block: ABIN925618 for 60 min at RT. Reaction visualized using alkaline phosphatase substrate for 30 seconds at RT.