



Datasheet for ABIN101515

## Goat anti-Human IgG (Heavy & Light Chain) Antibody (FITC) - Preadsorbed



[Go to Product page](#)

### 1 Image

#### Overview

Quantity:	2 mg
Target:	IgG
Binding Specificity:	Heavy & Light Chain
Reactivity:	Human
Host:	Goat
Clonality:	Polyclonal
Conjugate:	FITC
Application:	Flow Cytometry (FACS), FLISA, Fluorescence Microscopy (FM)

#### Product Details

Immunogen:	Immunogen: Human IgG whole molecule
Isotype:	IgG
Specificity:	IgG (H&L)
Characteristics:	Concentration Definition: by UV absorbance at 280 nm
Purification:	Preadsorption: Solid phase absorption
Labeling Ratio:	2.8

#### Target Details

Target:	IgG
Abstract:	<a href="#">IgG Products</a>

## Target Details

---

Target Type:	Antibody
Background:	<p>Synonyms: goat anti-Human IgG fluorescein conjugated Antibody, goat anti-Human IgG Antibody FITC conjugation</p> <p>Background: Anti-Human IgG (H&amp;L) Fluorescein generated in goat detects human Immunoglobulin G (IgG), both heavy and light chains of the antibody molecule are present. It is a protein complex composed of four peptide chains - two identical heavy chains and two identical light chains arranged in a Y-shape typical of antibody monomers. Each IgG has two antigen binding sites. Representing approximately 75 % of serum immunoglobulins in humans, IgG is the most abundant antibody isotype found in the circulation. IgG molecules are synthesized and secreted by plasma B cells. Secondary Antibodies are available in a variety of formats and conjugate types. When choosing a secondary antibody product, consideration must be given to species and immunoglobulin specificity, conjugate type, fragment and chain specificity, level of cross-reactivity, and host-species source and fragment composition.</p>

## Application Details

---

Application Notes:	<p>Application Note: Anti-Human IgG (H&amp;L) Fluorescein is designed for immunofluorescence microscopy, fluorescence based plate assays (FLISA) and fluorescent western blotting. This product is also suitable for multiplex analysis, including multicolor imaging, utilizing various commercial platforms.</p> <p>FLISA Dilution: 1:10,000 - 1:50,000</p> <p>Flow Cytometry Dilution: 1:500 - 1:2,500</p> <p>IF Microscopy Dilution: 1:1,000 - 1:5,000</p>
Comment:	Excitation/Emission wavelength: 494 nm/514 nm
Restrictions:	For Research Use only

## Handling

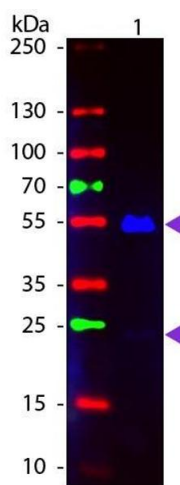
---

Format:	Lyophilized
Reconstitution:	<p>Reconstitution Volume: 1.0 mL</p> <p>Reconstitution Buffer: Restore with deionized water (or equivalent)</p>
Concentration:	2.0 mg/mL
Buffer:	<p>Buffer: 0.01 M Sodium Phosphate, 0.15 M Sodium Chloride, pH 7.2</p> <p>Stabilizer: 10 mg/mL Bovine Serum Albumin (BSA) - Immunoglobulin and Protease free</p> <p>Preservative: 0.01 % (w/v) Thimerosal</p>

## Handling

Preservative:	Thimerosal (Merthiolate)
Precaution of Use:	This product contains Thimerosal (Merthiolate): a POISONOUS AND HAZARDOUS SUBSTANCE which should be handled by trained staff only.
Handling Advice:	Product is photosensitive and should be protected from light.
Storage:	RT,4 °C,-20 °C
Expiry Date:	12 months

## Images



### Western Blotting

**Image 1.** Western Blot of Fluorescein conjugated Goat anti-Human IgG secondary antibody. Lane 1: Human IgG. Lane 2: none. Load: 50 ng per lane. Primary antibody: none. Secondary antibody: Fluorescein goat secondary antibody at 1:1,000 for 60 min at RT. Block: ABIN925618 for 30 min at RT. Predicted/Observed size: 25 & 55 kDa, 25 & 55 kDa for Human IgG. Other band(s): none.