

Datasheet for ABIN101529

Goat anti-Human IgG (Heavy & Light Chain) Antibody (Biotin) - Preadsorbed

[Go to Product page](#)

1 Image

Overview

Quantity:	1 mg
Target:	IgG
Binding Specificity:	Heavy & Light Chain
Reactivity:	Human
Host:	Goat
Clonality:	Polyclonal
Conjugate:	Biotin
Application:	ELISA, Immunohistochemistry (IHC), Western Blotting (WB)

Product Details

Immunogen:	Immunogen: Human IgG whole molecule
Isotype:	IgG
Specificity:	This product was prepared from monospecific antiserum by immunoaffinity chromatography using Human IgG coupled to agarose beads followed by solid phase adsorption(s) to remove any unwanted reactivities. Assay by immunoelectrophoresis resulted in a single precipitin arc against anti-biotin, anti-Goat Serum, Human IgG and Human Serum. No reaction was observed against Bovine, Chicken, Goat, Guinea Pig, Hamster, Horse, Mouse, Rabbit, Rat and Sheep Serum Proteins.
Cross-Reactivity:	Human
Purification:	Preadsorption: Solid phase absorption
Labeling Ratio:	10-20

Target Details

Target:	IgG
Abstract:	IgG Products
Target Type:	Antibody
Background:	<p>Synonyms: Anti Human IgG Secondary Antibody, Biotin Anti Human IgG, Conjugated Secondary Antibodies</p> <p>Background: Anti-Human IgG (H&L) Biotin generated in goat detects human Immunoglobulin G (IgG), both heavy and light chains of the antibody molecule are present. It is a protein complex composed of four peptide chains - two identical heavy chains and two identical light chains arranged in a Y-shape typical of antibody monomers. Each IgG has two antigen binding sites. Representing approximately 75 % of serum immunoglobulins in humans, IgG is the most abundant antibody isotype found in the circulation. IgG molecules are synthesized and secreted by plasma B cells. Secondary Antibodies are available in a variety of formats and conjugate types. When choosing a secondary antibody product, consideration must be given to species and immunoglobulin specificity, conjugate type, fragment and chain specificity, level of cross-reactivity, and host-species source and fragment composition.</p>

Application Details

Application Notes:	<p>Immunohistochemistry Dilution: 1:1,000 - 1:5,000</p> <p>Application Note: Biotin Secondary antibody reagents are ideal for western blotting, Immunohistochemistry and ELISA as well as other antibody detection methods</p> <p>ELISA Dilution: 1:20,000 - 1:100,000</p> <p>Western Blot Dilution: 1:2,000 - 1:10,000</p>
Comment:	Concentration (detection method): 1.0 mg/mL (by UV absorbance at 280 nm)
Restrictions:	For Research Use only

Handling

Format:	Lyophilized
Reconstitution:	<p>Reconstitution Volume: 1.0 mL</p> <p>Reconstitution Buffer: Restore with deionized water (or equivalent)</p>
Concentration:	1.0 mg/mL
Buffer:	<p>Buffer: 0.02 M Potassium Phosphate, 0.15 M Sodium Chloride, pH 7.2</p> <p>Stabilizer: 10 mg/mL Bovine Serum Albumin (BSA) - Immunoglobulin and Protease free</p>

Handling

Preservative: 0.01 % (w/v) Sodium Azide

Preservative: Sodium azide

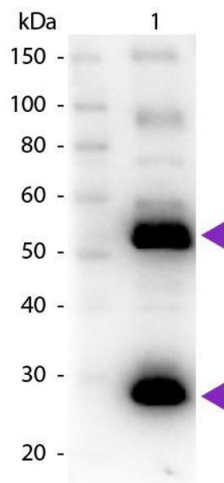
Precaution of Use: This product contains Sodium azide: a POISONOUS AND HAZARDOUS SUBSTANCE which should be handled by trained staff only.

Handling Advice: Aliquot to Avoid repeated freezing and thawing.

Storage: RT, 4 °C, -20 °C

Expiry Date: 12 months

Images



Western Blotting

Image 1. Western Blot of Goat anti-Human IgG Pre-Adsorbed Biotin Conjugated Secondary Antibody. Lane 1: Human IgG. Lane 2: None. Load: 50 ng per lane. Primary antibody: Biotin conjugated goat anti-Human IgG 1:1,000 for 60 min at RT. Secondary antibody: Peroxidase Streptavidin secondary antibody at 1:40,000 for 30 min at RT. Block: ABIN925618 for 30 min at RT. Predicted/Observed size: 25 & 55 kDa, 25 & 55 kDa for Human IgG. Other band(s): None.