

Datasheet for ABIN101572

Sheep anti-Human IgG (Heavy & Light Chain) Antibody (Biotin) - Preadsorbed



[Go to Product page](#)

1 Image

Overview

Quantity:	2 mg
Target:	IgG
Binding Specificity:	Heavy & Light Chain
Reactivity:	Human
Host:	Sheep
Clonality:	Polyclonal
Conjugate:	Biotin
Application:	ELISA, Immunohistochemistry (IHC), Western Blotting (WB)

Product Details

Immunogen:	Immunogen: Human IgG whole molecule
Isotype:	IgG
Specificity:	IgG (H&L)
Characteristics:	Concentration Definition: by UV absorbance at 280 nm
Purification:	Preadsorption: Solid phase absorption

Target Details

Target:	IgG
Abstract:	IgG Products
Target Type:	Antibody

Target Details

Background:	<p>Synonyms: Sheep Anti Human IgG Antibody Biotin Conjugation, Sheep Anti-Human IgG Biotin Conjugated Antibody</p> <p>Background: Anti-Human IgG (H&L) Biotin generated in sheep detects human Immunoglobulin G (IgG), both heavy and light chains of the antibody molecule are present. It is a protein complex composed of four peptide chains - two identical heavy chains and two identical light chains arranged in a Y-shape typical of antibody monomers. Each IgG has two antigen binding sites. Representing approximately 75 % of serum immunoglobulins in humans, IgG is the most abundant antibody isotype found in the circulation. IgG molecules are synthesized and secreted by plasma B cells. Secondary Antibodies are available in a variety of formats and conjugate types. When choosing a secondary antibody product, consideration must be given to species and immunoglobulin specificity, conjugate type, fragment and chain specificity, level of cross-reactivity, and host-species source and fragment composition.</p>
-------------	--

Application Details

Application Notes:	<p>Immunohistochemistry Dilution: 1:1,000 - 1:5,000</p> <p>Application Note: This product has been assayed against 1.0 µg of Human IgG in a standard capture ELISA using Peroxidase Conjugated Streptavidin #S000-03 and ABTS (2,2'-azino-bis-[3-ethylbentiazoline-6-sulfonic acid]) code # ABTS-100 as a substrate for 30 minutes at room temperature. A working dilution of 1:21,000 to 1:144,000 of the reconstitution concentration is suggested for this product.</p> <p>ELISA Dilution: 1:20,000 - 1:100,000</p> <p>Western Blot Dilution: 1:2,000 - 1:10,000</p>
--------------------	---

Restrictions:	For Research Use only
---------------	-----------------------

Handling

Format:	Lyophilized
Reconstitution:	Reconstitution Volume: 1.0 mL Reconstitution Buffer: Restore with deionized water (or equivalent)
Concentration:	2.0 mg/mL
Buffer:	Buffer: 0.01 M Sodium Phosphate, 0.15 M Sodium Chloride, pH 7.2 Stabilizer: 10 mg/mL Bovine Serum Albumin (BSA) - Immunoglobulin and Protease free Preservative: 0.01 % (w/v) Sodium Azide
Preservative:	Sodium azide

Handling

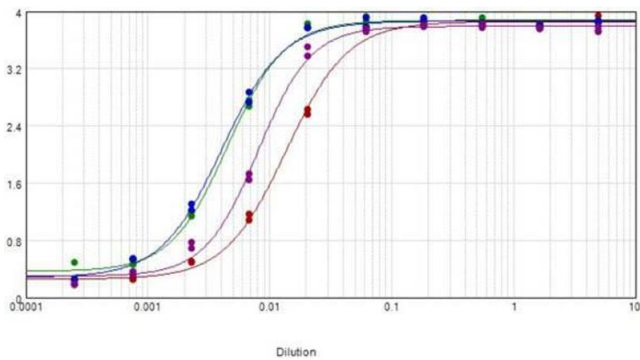
Precaution of Use: This product contains Sodium azide: a POISONOUS AND HAZARDOUS SUBSTANCE which should be handled by trained staff only.

Handling Advice: Aliquot to Avoid repeated freezing and thawing.

Storage: RT, 4 °C, -20 °C

Expiry Date: 12 months

Images



ELISA

Image 1. ELISA results of purified Sheep Anti-HUMAN IgG Biotin Conjugated Antibody tested against purified Human IgG. Each well was coated in duplicate with 1.0 μ g of human IgG (green line). The starting dilution of antibody was 5 μ g/ml and the X-axis represents the Log10 of a 3-fold dilution. This titration is a 4-parameter curve fit where the IC50 is defined as the titer of the antibody. Assay performed using Blocking buffer MB-060-1000, Streptavidin HRP conjugate 1:10,000 and TMB-1000 substrate.