

Datasheet for ABIN101591

**Goat anti-Human IgG (Heavy Chain) Antibody (Alkaline Phosphatase (AP)) - Preadsorbed**[Go to Product page](#)**1** Image

## Overview

Quantity:	1 mg
Target:	IgG
Binding Specificity:	Heavy Chain
Reactivity:	Human
Host:	Goat
Clonality:	Polyclonal
Conjugate:	Alkaline Phosphatase (AP)
Application:	ELISA, Immunohistochemistry (IHC), Western Blotting (WB)

## Product Details

Immunogen:	Immunogen: Human IgG gamma heavy chain
Isotype:	IgG
Specificity:	IgG (gamma chain)
Characteristics:	<p>Anti-Human IgG (gamma chain) Antibody generated in Goat detects specifically human IgG gamma heavy chain. This secondary antibody anti-Human is ideal for investigators who routinely perform ELISA, Sandwich ELISA, titration assays, western-blot, immunoprecipitation and more generally immunoassays. Anti-Human IgG (gamma chain) Antibody is ideal for investigators in Immunology, Cancer. and Microbiology research.</p> <p>Concentration Definition: by UV absorbance at 280 nm</p>
Purification:	Preadsorption: Solid phase absorption
Sterility:	Sterile filtered

## Target Details

---

Target:	IgG
Abstract:	<a href="#">IgG Products</a>
Target Type:	Antibody
Background:	<p>Synonyms: goat anti-Human IgG (gamma chain) alkaline phosphatase conjugated Antibody, goat anti-Human IgG Antibody alk phos conjugation</p> <p>Background: Anti-Human IgG (gamma chain) Alkaline Phosphatase generated in goat detects human Immunoglobulin G (gamma chain). It is a protein complex composed of four peptide chains - two identical heavy chains and two identical light chains arranged in a Y-shape typical of antibody monomers. Each IgG has two antigen binding sites. Representing approximately 75 % of serum immunoglobulins in humans, IgG is the most abundant antibody isotype found in the circulation. IgG molecules are synthesized and secreted by plasma B cells. Secondary Antibodies are available in a variety of formats and conjugate types. When choosing a secondary antibody product, consideration must be given to species and immunoglobulin specificity, conjugate type, fragment and chain specificity, level of cross-reactivity, and host-species source and fragment composition. Anti-Human IgG (gamma chain) Antibody is ideal for investigators in Immunology, Cancer, and Microbiology research.</p>

## Application Details

---

Application Notes:	<p>Immunohistochemistry Dilution: 1:200 - 1:1,000</p> <p>Application Note: Anti-Human IgG Alkaline Phosphatase is suitable for use in immunoelectrophoresis, western-blot, competitive western-blot, ELISA and competitive ELISA assays. Specific conditions for reactivity and signal detection should be optimized by the end user.</p> <p>ELISA Dilution: 1:4,000 - 1:16,000</p> <p>Western Blot Dilution: 1:500 - 1:2,500</p>
--------------------	---

Restrictions:	For Research Use only
---------------	-----------------------

## Handling

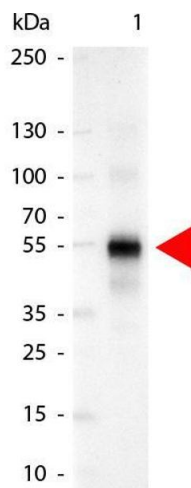
---

Format:	Liquid
Concentration:	1.0 mg/mL
Buffer:	<p>Buffer: 0.05 M Tris Chloride, 0.15M Sodium Chloride, 0.001M Magnesium Chloride, 0.0001M Zinc Chloride, 50 % (v/v) Glycerol, pH 8.0</p> <p>Stabilizer: 10 mg/mL Bovine Serum Albumin (BSA) - Immunoglobulin and Protease free</p>

## Handling

	Preservative: 0.01 % (w/v) Sodium Azide
Preservative:	Sodium azide
Precaution of Use:	This product contains Sodium azide: a POISONOUS AND HAZARDOUS SUBSTANCE which should be handled by trained staff only.
Handling Advice:	<b>Do not freeze!</b> Freezing alkaline phosphatase conjugates will result in a substantial loss of enzymatic activity. <b>Do not add Sodium azide.</b> Dilute only prior to immediate use Each reagent is stable for the period shown on the bottle label if stored as directed.
Storage:	4 °C
Expiry Date:	12 months

## Images



### Western Blotting

**Image 1.** Western Blot of Alkaline Phosphatase Conjugated Goat anti-Human IgG Gamma Chain antibody. Lane 1: Human IgG. Lane 2: none. Load: 50 ng per lane. Primary antibody: none. Secondary antibody: Alkaline Phosphatase human secondary antibody at 1:1,000 for 60 min at RT. Block: ABIN925618 for 30 min RT. Predicted/Observed size: 55 kDa for Human IgG Gamma Chain. Other band(s): none.