

Datasheet for ABIN101598

Rabbit anti-Human IgG (Heavy Chain) Antibody (Alkaline Phosphatase (AP)) - Preadsorbed[Go to Product page](#)**1** Image

Overview

Quantity:	1 mg
Target:	IgG
Binding Specificity:	Heavy Chain
Reactivity:	Human
Host:	Rabbit
Clonality:	Polyclonal
Conjugate:	Alkaline Phosphatase (AP)
Application:	ELISA, Immunohistochemistry (IHC), Western Blotting (WB)

Product Details

Immunogen:	Immunogen: Human IgG gamma heavy chain
Isotype:	IgG
Specificity:	IgG (gamma chain)
Characteristics:	Concentration Definition: by UV absorbance at 280 nm
Purification:	PreadSORPTION: Solid phase absorption
Sterility:	Sterile filtered

Target Details

Target:	IgG
Abstract:	IgG Products

Target Details

Target Type: Antibody

Background: Synonyms: rabbit anti-Human IgG (gamma chain) alkaline phosphatase conjugated Antibody, rabbit anti-Human IgG Antibody alk phos conjugation

Background: Anti-Human IgG (gamma chain) Alkaline Phosphatase generated in rabbit detects human Immunoglobulin G (gamma chain). It is a protein complex composed of four peptide chains - two identical heavy chains and two identical light chains arranged in a Y-shape typical of antibody monomers. Each IgG has two antigen binding sites. Representing approximately 75 % of serum immunoglobulins in humans, IgG is the most abundant antibody isotype found in the circulation. IgG molecules are synthesized and secreted by plasma B cells. Secondary Antibodies are available in a variety of formats and conjugate types. When choosing a secondary antibody product, consideration must be given to species and immunoglobulin specificity, conjugate type, fragment and chain specificity, level of cross-reactivity, and host-species source and fragment composition. Anti-Human IgG (gamma chain) Antibody is ideal for investigators in Immunology, Cancer, and Microbiology research.

Application Details

Application Notes: Immunohistochemistry Dilution: 1:200 - 1:1,000

Application Note: Anti-Human IgG (gamma chain) Alkaline Phosphatase has been assayed against 1.0 µg of Human IgG in a standard capture ELISA using pNPP p-nitrophenyl phosphate code # NPP-10 as a substrate for 30 minutes at room temperature. A working dilution of 1:1,000 to 1:3,500 of the reconstitution concentration is suggested for this product.

ELISA Dilution: 1:10,000 - 1:20,000

Western Blot Dilution: 1:500 - 1:2,500

Restrictions: For Research Use only

Handling

Format: Liquid

Concentration: 1.0 mg/mL

Buffer: Buffer: 0.05 M Tris Chloride, 0.15M Sodium Chloride, 0.001M Magnesium Chloride, 0.0001M Zinc Chloride, 50 % (v/v) Glycerol, pH 8.0

Stabilizer: 10 mg/mL Bovine Serum Albumin (BSA) - Immunoglobulin and Protease free

Preservative: 0.01 % (w/v) Sodium Azide

Preservative: Sodium azide

Handling

Precaution of Use: This product contains Sodium azide: a POISONOUS AND HAZARDOUS SUBSTANCE which should be handled by trained staff only.

Handling Advice: **Do not freeze!** Freezing alkaline phosphatase conjugates will result in a substantial loss of enzymatic activity.

Do not add Sodium azide.

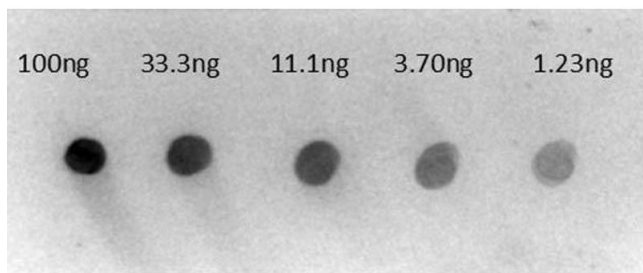
Dilute only prior to immediate use

Each reagent is stable for the period shown on the bottle label if stored as directed.

Storage: 4 °C

Expiry Date: 12 months

Images



Dot Blot

Image 1. Dot Blot of Rabbit Anti-Human IgG gamma chain Alkaline Phosphatase Conjugated Antibody. Lane 1: 100ng hu IgG. Lane 2: 33.3ng hu IgG. Lane 3: 11.1ng hu IgG. Lane 4: 3.70ng hu IgG. Lane 5: 1.23ng hu IgG. Secondary Antibody: Rt-a-Hu IgG Alk Phos at 1µg/mL. Blocking Buffer: BlockOut for 30 min at RT.