

Datasheet for ABIN101631

**Rabbit anti-Human IgG (F(ab')<sub>2</sub> Region) Antibody (HRP)**[Go to Product page](#)**1** Image

## Overview

Quantity:	1 mg
Target:	IgG
Binding Specificity:	F(ab') <sub>2</sub> Region
Reactivity:	Human
Host:	Rabbit
Clonality:	Polyclonal
Conjugate:	HRP
Application:	ELISA, Immunohistochemistry (IHC), Western Blotting (WB)

## Product Details

Immunogen:	Human IgG fragment
Isotype:	IgG
Specificity:	IgG F(ab') <sub>2</sub>
Characteristics:	Concentration Definition: by UV absorbance at 280 nm

## Target Details

Target:	IgG
Abstract:	<a href="#">IgG Products</a>
Target Type:	Antibody

## Application Details

**Application Notes:** Anti-Human IgG F(ab')<sub>2</sub> antibody has been assayed against 1.0 µg of Human IgG in a standard capture ELISA using ABTS (2,2'-azino-bis-[3-ethylbenthiazoline-6-sulfonic acid]) as a substrate for 30 minutes at room temperature. A working dilution of 1:8,500 to 1:72,000 of the reconstitution concentration is suggested for this product. This product is also suitable for Western Blot and Immunohistochemistry. Specific conditions for reactivity should be optimized by the end user.

**Restrictions:** For Research Use only

## Handling

**Format:** Lyophilized

**Reconstitution:** Restore with deionized water (or equivalent)

**Concentration:** 1.0 mg/mL

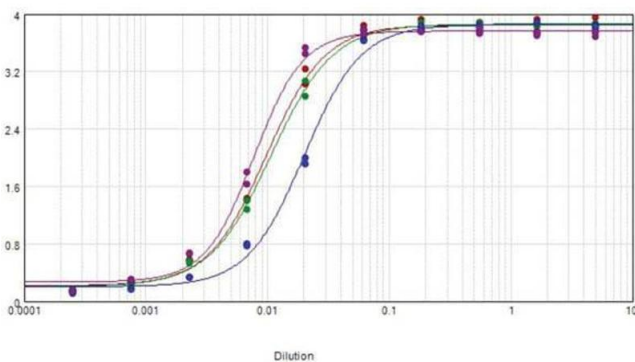
**Buffer:** 0.02 M Potassium Phosphate, 0.15 M Sodium Chloride, pH 7.2

**Preservative:** Gentamicin sulfate

**Handling Advice:** Do NOT add Sodium Azide! Use of Sodium Azide will inhibit enzyme activity of horseradish peroxidase.

**Storage:** 4 °C

## Images



### ELISA

**Image 1.** ELISA results of purified Rabbit Anti-Human IgG F(ab')<sub>2</sub> Peroxidase Conjugated Antibody tested against purified Human IgG F(ab')<sub>2</sub>. Each well was coated in duplicate with 1.0 µg of Human IgG F(ab')<sub>2</sub> (blue line). The starting dilution of antibody was 5 µg/ml and the X-axis represents the Log<sub>10</sub> of a 3-fold dilution. This titration is a 4-parameter curve fit where the IC<sub>50</sub> is defined as the titer of the antibody. Assay performed using TMB-1000 substrate.