

Datasheet for ABIN101661

## Goat anti-Human IgG (Fc Region) Antibody (FITC) - Preadsorbed



[Go to Product page](#)

### 1 Image

#### Overview

Quantity:	1 mg
Target:	IgG
Binding Specificity:	Fc Region
Reactivity:	Human
Host:	Goat
Clonality:	Polyclonal
Conjugate:	FITC
Application:	Flow Cytometry (FACS), FLISA, Fluorescence Microscopy (FM)

#### Product Details

Immunogen:	Immunogen: Human IgG F(c) fragment
Isotype:	IgG
Specificity:	IgG (H&L)
Characteristics:	Concentration Definition: by UV absorbance at 280 nm
Purification:	Preadsorption: Solid phase absorption
Labeling Ratio:	3.7

#### Target Details

Target:	IgG
Abstract:	<a href="#">IgG Products</a>

## Target Details

---

Target Type:	Antibody
Background:	<p>Synonyms: goat anti-Human IgG F(c) fluorescein Conjugated Antibody, goat anti-Human IgG F(c) fragment antibody FITC conjugation</p> <p>Background: Anti-Human IgG F(c) Fluorescein Conjugated generated in goat detects Human F(c). A proteolytic fragment of immunoglobulin G (IgG) obtained by limited digestion with the enzyme papain under controlled conditions of temperature, time and pH . Receptors bind the Fc portion of human IgG and often this fragment is removed from immunoglobulins to minimize receptor binding and lower background reactivity. Secondary Antibodies are available in a variety of formats and conjugate types. When choosing a secondary antibody product, consideration must be given to species and immunoglobulin specificity, conjugate type, fragment and chain specificity, level of cross-reactivity, and host-species source and fragment composition. F(c) Antibody is ideal for investigators who routinely perform flow cytometry, immunohistochemistry or IHC and other immunoassays.</p>

## Application Details

---

Application Notes:	<p>Application Note: Anti-Human IgG F(c) Fluorescein Conjugated is designed for immunofluorescence microscopy, fluorescence based plate assays (FLISA) and fluorescent western blotting. This product is also suitable for multiplex analysis, including multicolor imaging, utilizing various commercial platforms.</p> <p>FLISA Dilution: 1:10,000 - 1:50,000</p> <p>Flow Cytometry Dilution: 1:500 - 1:2,500</p> <p>IF Microscopy Dilution: 1:1,000 - 1:5,000</p>
--------------------	--

Comment:	<p>This product is for research use only and is not intended for therapeutic or diagnostic applications. Please contact a technical service representative for more information. nm</p> <p>Excitation/Emission wavelength: 494 nm/514 nm</p>
----------	--

Restrictions:	For Research Use only
---------------	-----------------------

## Handling

---

Format:	Lyophilized
Reconstitution:	<p>Reconstitution Volume: 1.0 mL</p> <p>Reconstitution Buffer: Restore with deionized water (or equivalent)</p>
Concentration:	1.0 mg/mL
Buffer:	Buffer: 0.02 M Potassium Phosphate, 0.15 M Sodium Chloride, pH 7.2

## Handling

Stabilizer: 10 mg/mL Bovine Serum Albumin (BSA) - Immunoglobulin and Protease free  
Preservative: 0.01 % (w/v) Sodium Azide

Preservative: Sodium azide

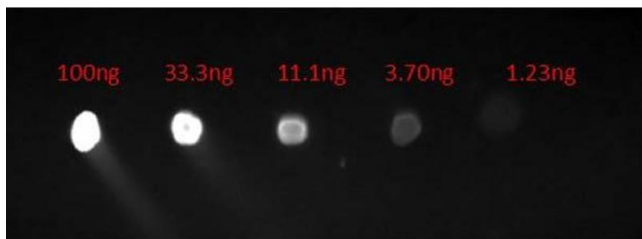
Precaution of Use: This product contains Sodium azide: a POISONOUS AND HAZARDOUS SUBSTANCE which should be handled by trained staff only.

Handling Advice: Product is photosensitive and should be protected from light.

Storage: RT, 4 °C, -20 °C

Expiry Date: 12 months

## Images



### Dot Blot

**Image 1.** Dot Blot of Goat Anti-HUMAN IgG F(c) Fluorescein Conjugated Antibody. Lane 1: 100ng. Lane 2: 33.3ng. Lane 3: 11.1ng. Lane 4: 3.7ng. Lane 5: 1.23ng. Secondary Antibody: Goat Anti-Human F(c) FITC 1µg/mL. Blocking Buffer: BlockOut for 30 min at RT.