



[Go to Product page](#)

Datasheet for ABIN101664

Rabbit anti-Human IgG (Fc Region) Antibody

1 Image

Overview

Quantity:	2 mL
Target:	IgG
Binding Specificity:	Fc Region
Reactivity:	Human
Host:	Rabbit
Clonality:	Polyclonal
Application:	ELISA, Immunohistochemistry (IHC), Western Blotting (WB)

Product Details

Immunogen:	Immunogen: Human IgG F(c) fragment
Specificity:	IgG F(c)
Characteristics:	Concentration Definition: by Refractometry
Purification:	Human IgG F(c) Antibody was prepared from monospecific antiserum by a delipidation and defibrination. Assay by immunoelectrophoresis resulted in a single precipitin arc against anti-rabbit serum, Human IgG, Human IgG F(c) and Human Serum. No reaction was observed against Human IgG F(ab).

Target Details

Target:	IgG
Abstract:	IgG Products
Target Type:	Antibody

Target Details

Background:	<p>Synonyms: rabbit anti-Human IgG F(c) fragment Antibody, rabbit anti-Human IgG Fc fragment Antibody, rabbit anti Human IgG Fc</p> <p>Background: Anti-Human IgG F(c) generated in rabbit detects Human F(c). A proteolytic fragment of immunoglobulin G (IgG) obtained by limited digestion with the enzyme papain under controlled conditions of temperature, time and pH . Receptors bind the Fc portion of human IgG and often this fragment is removed from immunoglobulins to minimize receptor binding and lower background reactivity. Secondary Antibodies are available in a variety of formats and conjugate types. When choosing a secondary antibody product, consideration must be given to species and immunoglobulin specificity, conjugate type, fragment and chain specificity, level of cross-reactivity, and host-species source and fragment composition. F(c) Antibody is ideal for investigators who routinely perform flow cytometry, immunohistochemistry or IHC and other immunoassays.</p>
-------------	--

Application Details

Application Notes:	<p>Immunohistochemistry Dilution: 1:1,000 - 1:5,000</p> <p>Application Note: This product is designed for immunofluorescence microscopy, fluorescence based plate assays (FLISA) and fluorescent western blotting. This product is also suitable for multiplex analysis, including multicolor imaging, utilizing various commercial platforms.</p> <p>ELISA Dilution: 1:20,000 - 1:100,000</p> <p>Western Blot Dilution: 1:2,000 - 1:10,000</p>
--------------------	---

Restrictions:	For Research Use only
---------------	-----------------------

Handling

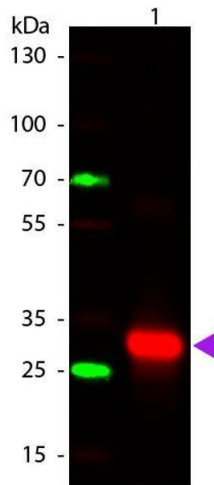
Format:	Lyophilized
Reconstitution:	<p>Reconstitution Volume: 2.0 mL</p> <p>Reconstitution Buffer: Restore with deionized water (or equivalent)</p>
Concentration:	80.0 mg/mL
Buffer:	<p>Buffer: 0.02 M Potassium Phosphate, 0.15 M Sodium Chloride, pH 7.2</p> <p>Stabilizer: None</p> <p>Preservative: 0.01 % (w/v) Sodium Azide</p>
Preservative:	Sodium azide
Precaution of Use:	This product contains Sodium azide: a POISONOUS AND HAZARDOUS SUBSTANCE which should be handled by trained staff only.

Handling

Storage: RT, 4 °C, -20 °C

Expiry Date: 12 months

Images



Western Blotting

Image 1. Western Blot of Rabbit anti-Human IgG F(c) Secondary Antibody. Lane 1: Human F(c). Lane 2: None. Load: 50 ng per lane. Primary antibody: Human IgG F(c) secondary antibody at 1:1000 overnight at 4°C. Secondary antibody: 649 rabbit secondary antibody at 1:20,000 for 30 min at RT. Block: ABIN925618 for 30 min at RT. Predicted/Observed size: 28 kDa, 28 kDa for Human IgG F(c). Other band(s): None.