



[Go to Product page](#)

Datasheet for ABIN101676

## Goat anti-Monkey IgG (Heavy Chain) Antibody - Preadsorbed

### 1 Image

#### Overview

Quantity:	1 mg
Target:	IgG
Binding Specificity:	Heavy Chain
Reactivity:	Monkey
Host:	Goat
Clonality:	Polyclonal
Application:	ELISA, Immunohistochemistry (IHC), Western Blotting (WB)

#### Product Details

Immunogen:	Immunogen: Anti-Monkey IgG (gamma chain) was produced by repeated immunization with monkey IgG gamma heavy chain in goat. Immunogen Type: Native Protein
Isotype:	IgG
Specificity:	IgG (gamma chain)
Cross-Reactivity:	Monkey
Characteristics:	Anti-Monkey IgG (gamma chain) antibody generated in goat detects specifically monkey IgG (gamma chain). This secondary antibody anti-Monkey is ideal for investigators who routinely perform ELISA, Sandwich ELISA, titration assays, western-blot, immunoprecipitation and more generally immunoassays. Concentration Definition: by UV absorbance at 280 nm
Purification:	Preadsorption: Solid phase absorption

## Product Details

---

Sterility: Sterile filtered

## Target Details

---

Target: IgG

Abstract: [IgG Products](#)

Target Type: Antibody

Background: Synonyms: goat anti-Monkey IgG (gamma chain) antibody  
Background: Anti-Monkey IgG (gamma chain) antibody generated in goat detects specifically monkey IgG (gamma chain). This secondary antibody anti-Monkey is ideal for investigators who routinely perform ELISA, Sandwich ELISA, titration assays, western-blot, immunoprecipitation and more generally immunoassays.

## Application Details

---

Application Notes: Immunohistochemistry Dilution: 1:1,000 - 1:5,000  
Application Note: Anti-Monkey IgG (gamma chain) is suitable for use in immunoelectrophoresis, western-blot, competitive western-blot, ELISA and competitive ELISA assays. Specific conditions for reactivity and signal detection should be optimized by the end user.  
ELISA Dilution: 1:75000 - 1:175,000  
Western Blot Dilution: 1:2,000 - 1:10,000

Restrictions: For Research Use only

## Handling

---

Format: Liquid

Concentration: 1.0 mg/mL

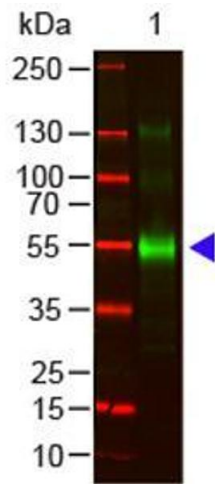
Buffer: Buffer: 0.02 M Potassium Phosphate, 0.15 M Sodium Chloride, pH 7.2  
Preservative: 0.01 % (w/v) Sodium Azide

Preservative: Sodium azide

Precaution of Use: This product contains Sodium azide: a POISONOUS AND HAZARDOUS SUBSTANCE which should be handled by trained staff only.

Storage: 4 °C, -20 °C

Expiry Date: 12 months



### Western Blotting

**Image 1.** Western Blot of Goat anti-Monkey IgG gamma Antibody. Lane 1: Monkey IgG. Lane 2: None. Load: 100 ng per lane. Primary antibody: Monkey IgG gamma Antibody at 1:1000 for overnight at 4°C. Secondary antibody: 800 goat secondary antibody at 1:20,000 for 30 min at RT. Block: ABIN925618 for 30 min at RT. Predicted/Observed size: 55 kDa, 55 kDa for Monkey IgG Gamma. Other band(s): None.