

Datasheet for ABIN101749

Goat anti-Mouse IgG (Heavy & Light Chain) Antibody - Preadsorbed

[Go to Product page](#)

1 Image

Overview

Quantity:	2 mg
Target:	IgG
Binding Specificity:	Heavy & Light Chain
Reactivity:	Mouse
Host:	Goat
Clonality:	Polyclonal
Application:	ELISA, Immunohistochemistry (IHC), Western Blotting (WB)

Product Details

Immunogen:	Immunogen: Mouse IgG whole molecule
Isotype:	IgG
Specificity:	IgG (H&L)
Characteristics:	Concentration Definition: by UV absorbance at 280 nm
Purification:	Preadsorption: Solid phase absorption
Sterility:	Sterile filtered

Target Details

Target:	IgG
Abstract:	IgG Products
Target Type:	Antibody

Target Details

Background:	<p>Synonyms: Goat Anti Mouse IgG (H&L) Antibody Pre-Adsorbed, Goat Anti-Mouse IgG Antibody Pre-Adsorbed</p> <p>Background: Anti-Mouse IgG Antibody generated in goat detects reactivity to Mouse IgG. Secreted as part of the adaptive immune response by plasma B cells, immunoglobulin G constitutes 75 % of serum immunoglobulins. Immunoglobulin G binds to viruses, bacteria, as well as fungi and facilitates their destruction or neutralization via agglutination (and thereby immobilizing them), activation of the compliment cascade, and opsinization for phagocytosis. The whole IgG molecule possesses both the F(c) region, recognized by high-affinity Fc receptor proteins, as well as the F(ab) region possessing the epitope-recognition site. Both the Heavy and Light chains of the antibody molecule are present. Secondary Antibodies are available in a variety of formats and conjugate types. When choosing a secondary antibody product, consideration must be given to species and immunoglobulin specificity, conjugate type, fragment and chain specificity, level of cross-reactivity, and host-species source and fragment composition.</p>
-------------	---

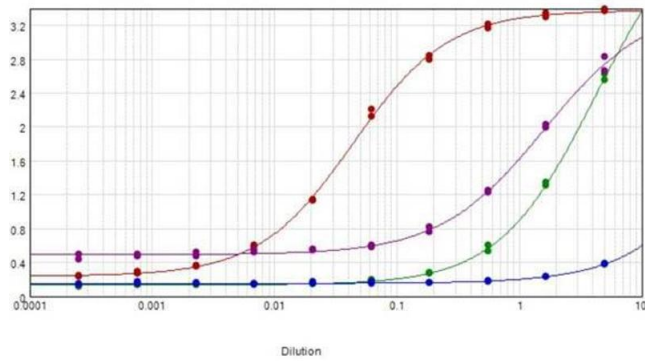
Application Details

Application Notes:	<p>Immunohistochemistry Dilution: 1:5,000 - 1:25,000</p> <p>Application Note: Anti-Mouse IgG antibody is suitable for ELISA, western blot, and immunohistochemistry, as well as other assays requiring lot-to-lot consistency.</p> <p>ELISA Dilution: 1:100,000 - 1:500,000</p> <p>Western Blot Dilution: 1:10,000 - 1:50,000</p>
--------------------	---

Restrictions:	For Research Use only
---------------	-----------------------

Handling

Format:	Liquid
Concentration:	8.6 mg/mL
Buffer:	<p>Buffer: 0.02 M Potassium Phosphate, 0.15 M Sodium Chloride, pH 7.2</p> <p>Stabilizer: None</p> <p>Preservative: 0.01 % (w/v) Sodium Azide</p>
Preservative:	Sodium azide
Precaution of Use:	This product contains Sodium azide: a POISONOUS AND HAZARDOUS SUBSTANCE which should be handled by trained staff only.
Storage:	4 °C, -20 °C



ELISA

Image 1. ELISA results of purified Goat anti-Mouse IgG Antibody Min X human serum tested against purified Mouse IgG. Each well was coated in duplicate with 1.0 μg of Mouse IgG (red line) Human IgG (green line). The starting dilution of antibody was 5 $\mu\text{g}/\text{ml}$ and the X-axis represents the Log10 of a 3-fold dilution. This titration is a 4-parameter curve fit where the IC50 is defined as the titer of the antibody. Assay performed using Blocking buffer MB-060-1000, Gt-anti-Donkey HRP conjugate 616-1302, and TMB-1000 substrate.