

Datasheet for ABIN101777

**Rabbit anti-Mouse IgG (Heavy & Light Chain) Antibody
(Alkaline Phosphatase (AP)) - Preadsorbed**[Go to Product page](#)**1** Image

Overview

Quantity:	1 mg
Target:	IgG
Binding Specificity:	Heavy & Light Chain
Reactivity:	Mouse
Host:	Rabbit
Clonality:	Polyclonal
Conjugate:	Alkaline Phosphatase (AP)
Application:	ELISA, Immunohistochemistry (IHC), Western Blotting (WB)

Product Details

Immunogen:	Immunogen: Mouse IgG whole molecule
Isotype:	IgG
Specificity:	IgG (H&L)
Characteristics:	Concentration Definition: by UV absorbance at 280 nm
Purification:	Preadsorption: Solid phase absorption
Sterility:	Sterile filtered

Target Details

Target:	IgG
Abstract:	IgG Products

Target Details

Target Type:	Antibody
Background:	<p>Synonyms: rabbit anti-Mouse IgG Antibody alkaline phosphatase conjugation, rabbit anti-Mouse IgG alk phos conjugated Antibody</p> <p>Background: Anti-Mouse IgG Alkaline Phosphatase antibody generated in rabbit detects reactivity to Mouse IgG. Secreted as part of the adaptive immune response by plasma B cells, immunoglobulin G constitutes 75 % of serum immunoglobulins. Immunoglobulin G binds to viruses, bacteria, as well as fungi and facilitates their destruction or neutralization via agglutination (and thereby immobilizing them), activation of the compliment cascade, and opsinization for phagocytosis. The whole IgG molecule possesses both the F(c) region, recognized by high-affinity Fc receptor proteins, as well as the F(ab) region possessing the epitope-recognition site. Both the Heavy and Light chains of the antibody molecule are present. Secondary Antibodies are available in a variety of formats and conjugate types. When choosing a secondary antibody product, consideration must be given to species and immunoglobulin specificity, conjugate type, fragment and chain specificity, level of cross-reactivity, and host-species source and fragment composition.</p>

Application Details

Application Notes:	<p>Immunohistochemistry Dilution: 1:200 - 1:1,000</p> <p>Application Note: Conjugated Secondary Antibodies are ideal for western blotting, Immunohistochemistry and ELISA as well as other antibody detection methods.</p> <p>ELISA Dilution: 1:2,000 - 1:10,000</p> <p>Western Blot Dilution: 1:500 - 1:2,500</p>
Comment:	<p>Secondary antibody reagents are available in a variety of formats and conjugate types. When choosing a secondary antibody product, consideration must be given to species and immunoglobulin specificity, conjugate type, fragment and chain specificity, level of cross-reactivity, and host-species source and fragment composition.</p>
Restrictions:	For Research Use only

Handling

Format:	Liquid
Concentration:	1.0 mg/mL
Buffer:	Buffer: 0.05 M Tris Chloride, 0.15M Sodium Chloride, 0.001M Magnesium Chloride, 0.0001M Zinc Chloride, 50 % (v/v) Glycerol, pH 8.0

Handling

Stabilizer: 10 mg/mL Bovine Serum Albumin (BSA) - Immunoglobulin and Protease free
Preservative: 0.01 % (w/v) Sodium Azide

Preservative: Sodium azide

Precaution of Use: This product contains Sodium azide: a POISONOUS AND HAZARDOUS SUBSTANCE which should be handled by trained staff only.

Handling Advice: **Do not freeze!** Freezing alkaline phosphatase conjugates will result in a substantial loss of enzymatic activity.

Do not add Sodium azide.

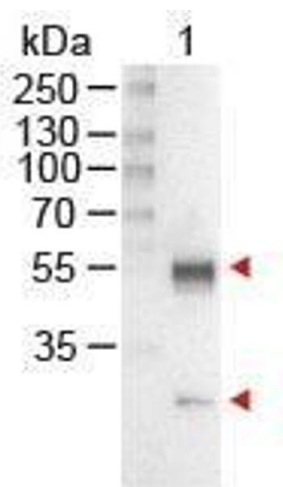
Dilute only prior to immediate use

Each reagent is stable for the period shown on the bottle label if stored as directed.

Storage: 4 °C

Expiry Date: 12 months

Images



Western Blotting

Image 1. Western Blot of Rabbit anti-Mouse IgG Antibody Alkaline Phosphatase Conjugated Lane 1: Mouse IgG Load: 100 ng per lane Secondary antibody: MOUSE IgG (H&L) Antibody Alkaline Phosphatase Conjugated at 1:1,000 for 60 min at RT Block: ABIN925618 for 30 min at RT Predicted/Observed size: 55 and 28 kDa, 55 and 28 kDa