

Datasheet for ABIN101882

**Rabbit anti-Pig IgG (Heavy & Light Chain) Antibody**[Go to Product page](#)**1** Image

## Overview

Quantity:	2 mL
Target:	IgG
Binding Specificity:	Heavy & Light Chain
Reactivity:	Pig
Host:	Rabbit
Clonality:	Polyclonal
Application:	ELISA, Immunohistochemistry (IHC), Western Blotting (WB)

## Product Details

Immunogen:	Immunogen: Swine IgG whole molecule
Specificity:	IgG (H&L)
Characteristics:	Concentration Definition: by Refractometry
Purification:	This product was prepared from monospecific antiserum by a delipidation and defibrination. Assay by immunoelectrophoresis resulted in a single precipitin arc against anti-rabbit serum, Swine IgG and Swine Serum.

## Target Details

Target:	IgG
Abstract:	<a href="#">IgG Products</a>
Target Type:	Antibody

## Target Details

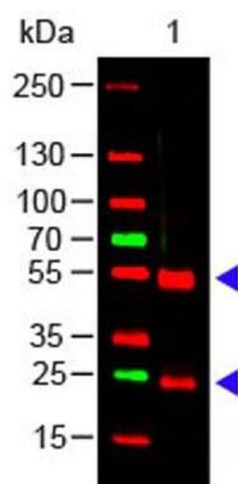
Background:	Synonyms: rabbit anti-Swine IgG Antibody, rabbit anti Swine IgG  Background: Anti-Swine IgG (H&L) generated in rabbit detects swine Immunoglobulin G. Both the Heavy and Light chains of the antibody molecule are present. Representing approximately 75 % of serum immunoglobulins, IgG is the most abundant antibody isotype found in the circulation. IgG molecules are synthesized and secreted by plasma B cells. Secondary Antibodies are available in a variety of formats and conjugate types. When choosing a secondary antibody product, consideration must be given to species and immunoglobulin specificity, conjugate type, fragment and chain specificity, level of cross-reactivity, and host-species source and fragment composition.
-------------	---

## Application Details

Application Notes:	Immunohistochemistry Dilution: 1:1,000 - 1:5,000  Application Note: Anti-Swine IgG antibody is suitable for use in ELISA, immunohistochemistry, and western blot. Specific conditions for reactivity should be optimized by the end user.  ELISA Dilution: 1:20,000 - 1:100,000  Western Blot Dilution: 1:2,000 - 1:10,000
Restrictions:	For Research Use only

## Handling

Format:	Lyophilized
Reconstitution:	Reconstitution Volume: 2.0 mL  Reconstitution Buffer: Restore with deionized water (or equivalent)
Concentration:	90 mg/mL
Buffer:	Buffer: 0.01 M Sodium Phosphate, 0.15 M Sodium Chloride, pH 7.2  Stabilizer: None  Preservative: 0.01 % (w/v) Sodium Azide
Preservative:	Sodium azide
Precaution of Use:	This product contains Sodium azide: a POISONOUS AND HAZARDOUS SUBSTANCE which should be handled by trained staff only.
Storage:	RT, 4 °C, -20 °C
Expiry Date:	12 months



Western Blotting

**Image 1.** Western Blot of Rabbit anti-Swine IgG (H&L) Antibody Lane 1: Swine IgG Load: 100 ng per lane Primary antibody: Swine IgG (H&L) Antibody at 1:1000 for overnight at 4°C Secondary antibody: 649 goat anti-rabbit at 1:20,000 for 30 min at RT Block: ABIN925618 for 30 min at RT Predicted/Observed size: 55 and 28 kDa, 55 and 28 kDa