



Datasheet for ABIN101883

## Rabbit anti-Pig IgG (Heavy & Light Chain) Antibody



[Go to Product page](#)

### 1 Image

#### Overview

Quantity:	50 mg
Target:	IgG
Binding Specificity:	Heavy & Light Chain
Reactivity:	Pig
Host:	Rabbit
Clonality:	Polyclonal
Application:	ELISA, Immunohistochemistry (IHC), Western Blotting (WB)

#### Product Details

Immunogen:	Immunogen: Swine IgG whole molecule
Isotype:	IgG
Specificity:	IgG (H&L)
Characteristics:	Concentration Definition: by UV absorbance at 280 nm
Purification:	This product is an IgG fraction antibody purified from monospecific antiserum by a multi-step process which includes delipidation, salt fractionation and ion exchange chromatography followed by extensive dialysis against the buffer stated above. Assay by immunoelectrophoresis resulted in a single precipitin arc against anti-Rabbit Serum, Swine IgG and Swine Serum.

#### Target Details

Target:	IgG
---------	-----

## Target Details

---

Abstract: [IgG Products](#)

---

Target Type: Antibody

---

Background: Synonyms: rabbit anti-Swine IgG Antibody, rabbit anti Swine IgG  
Background: Anti-Swine IgG (H&L) generated in rabbit detects swine Immunoglobulin G. Both the Heavy and Light chains of the antibody molecule are present. Representing approximately 75 % of serum immunoglobulins, IgG is the most abundant antibody isotype found in the circulation. IgG molecules are synthesized and secreted by plasma B cells. Secondary Antibodies are available in a variety of formats and conjugate types. When choosing a secondary antibody product, consideration must be given to species and immunoglobulin specificity, conjugate type, fragment and chain specificity, level of cross-reactivity, and host-species source and fragment composition.

## Application Details

---

Application Notes: Immunohistochemistry Dilution: 1:1,000 - 1:5,000  
Application Note: Anti-Swine antibody is suitable for use in ELISA, immunohistochemistry, and western blot. Specific conditions for reactivity should be optimized by the end user.  
ELISA Dilution: 1:20,000 - 1:100,000  
Western Blot Dilution: 1:2,000 - 1:10,000

---

Restrictions: For Research Use only

---

## Handling

---

Format: Lyophilized

---

Reconstitution: Reconstitution Volume: 5.0 mL  
Reconstitution Buffer: Restore with deionized water (or equivalent)

---

Concentration: 10.0 mg/mL

---

Buffer: Buffer: 0.02 M Potassium Phosphate, 0.15 M Sodium Chloride, pH 7.2  
Stabilizer: None  
Preservative: None

---

Preservative: Without preservative

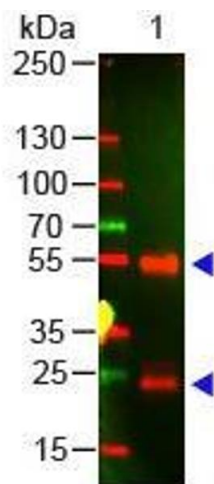
---

Storage: RT, 4 °C, -20 °C

---

Expiry Date: 12 months

---



### Western Blotting

**Image 1.** Western Blot of Rabbit anti-Swine IgG Antibody.

Lane 1: Swine IgG. Load: 100 ng per lane. Primary antibody:

Swine IgG Antibody at 1:1000 for overnight at 4°C.

Secondary antibody: 649 goat anti-rabbit at 1:20,000 for 30

min at RT. Block: ABIN925618 for 30 min at RT.