



[Go to Product page](#)

Datasheet for ABIN101889

## Rabbit anti-Pig IgG (Heavy & Light Chain) Antibody (HRP)

### 1 Image

#### Overview

Quantity:	20 mg
Target:	IgG
Binding Specificity:	Heavy & Light Chain
Reactivity:	Pig
Host:	Rabbit
Clonality:	Polyclonal
Conjugate:	HRP
Application:	ELISA

#### Product Details

Immunogen:	Swine IgG whole molecule
Isotype:	IgG
Specificity:	IgG (H&L)
Characteristics:	Concentration Definition: by UV absorbance at 280 nm

#### Target Details

Target:	IgG
Abstract:	<a href="#">IgG Products</a>
Target Type:	Antibody

## Application Details

**Application Notes:** This product has been assayed against 1.0 µg of Swine IgG in a standard capture ELISA using ABTS (2,2'-azino-bis-[3-ethylbenthiazoline-6-sulfonic acid]) as a substrate for 30 minutes at room temperature. A working dilution of 1:20,000 to 1:100,000 of the reconstitution concentration is suggested for this product.

**Restrictions:** For Research Use only

## Handling

**Format:** Lyophilized

**Reconstitution:** Restore with deionized water (or equivalent)

**Concentration:** 10.0 mg/mL

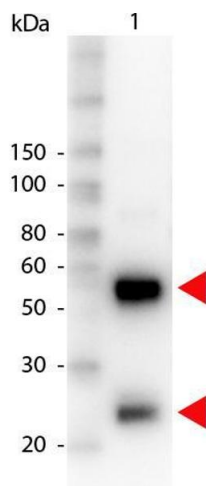
**Buffer:** 0.01 M Sodium Phosphate, 0.15 M Sodium Chloride, pH 7.2

**Preservative:** Gentamicin sulfate

**Handling Advice:** Do NOT add Sodium Azide! Use of Sodium Azide will inhibit enzyme activity of horseradish peroxidase.

**Storage:** 4 °C

## Images



### Western Blotting

**Image 1.** Western Blot of Peroxidase conjugated Rabbit anti-Swine IgG antibody. Lane 1: Swine IgG. Lane 2: none. Load: 100 ng per lane. Primary antibody: none. Secondary antibody: Peroxidase swine secondary antibody at 1:1,000 for 60 min at RT. Block: ABIN925618 for 30 min at RT. Predicted/Observed size: 55 kDa, 28 kDa for Swine IgG. Other band(s): none.