

Datasheet for ABIN101939

Chicken anti-Rabbit IgG (Heavy & Light Chain) Antibody (HRP)[Go to Product page](#)[1 Image](#)[1 Publication](#)

Overview

Quantity:	1 mg
Target:	IgG
Binding Specificity:	Heavy & Light Chain
Reactivity:	Rabbit
Host:	Chicken
Clonality:	Polyclonal
Conjugate:	HRP
Application:	ELISA, Western Blotting (WB)

Product Details

Immunogen:	Anti-Rabbit IgG whole molecule was produced by repeated immunization with Rabbit IgG whole molecule in chicken.
Isotype:	IgG
Specificity:	IgG (H&L)
Characteristics:	<p>Anti-Rabbit IgG whole molecule antibody generated in chicken detects specifically Rabbit IgG whole molecule. This secondary antibody anti-Rabbit is ideal for investigators who routinely perform ELISA, Sandwich ELISA, titration assays, western-blot, immunoprecipitation and more generally immunoassays.</p> <p>Concentration Definition: by UV absorbance at 280 nm</p>

Target Details

Target:	IgG
Abstract:	IgG Products
Target Type:	Antibody
Background:	Synonyms: Rabbit Antibody, Ch-a-Rabbit IgG, Rabbit Antibody in Chicken, Rabbit Secondary Antibody

Application Details

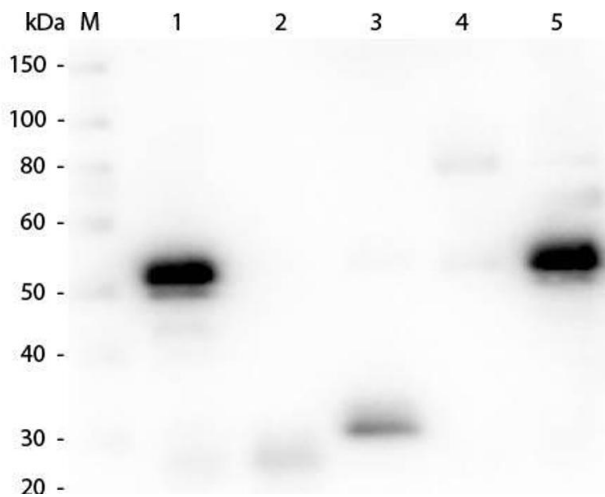
Application Notes:	Anti-Rabbit IgG whole molecule is suitable for use in immunoelectrophoresis, western-blot, competitive western-blot, ELISA and competitive ELISA assays. Specific conditions for reactivity and signal detection should be optimized by the end user.
Restrictions:	For Research Use only

Handling

Format:	Lyophilized
Reconstitution:	Restore with deionized water (or equivalent)
Concentration:	1.0 mg/mL
Buffer:	0.02 M Potassium Phosphate, 0.15 M Sodium Chloride, pH 7.2
Preservative:	Gentamicin sulfate
Handling Advice:	Do NOT add Sodium Azide! Use of Sodium Azide will inhibit enzyme activity of horseradish peroxidase.
Storage:	4 °C

Publications

Product cited in:	Zhu, Bi, Li, Yin, Deng, Pan, Li, Xiao: "α- and β-Naphthoflavone synergistically attenuate H2O2-induced neuron SH-SY5Y cell damage." in: Experimental and therapeutic medicine , Vol. 13, Issue 3, pp. 1143-1150, (2017) (PubMed).
-------------------	--



Western Blotting

Image 1. Western Blot of Anti-Rabbit IgG (H&L) (CHICKEN) Antibody . Lane M: 3 μ l Molecular Ladder. Lane 1: Rabbit IgG whole molecule . Lane 2: Rabbit IgG F(ab) Fragment . Lane 3: Rabbit IgG F(c) Fragment . Lane 4: Rabbit IgM Whole Molecule . Lane 5: Normal Rabbit Serum . All samples were reduced. Load: 50 ng per lane. Block: ABIN925618 for 30 min at RT. Primary Antibody: Anti-Rabbit IgG (H&L) (CHICKEN) Antibody 1:1,000 for 60 min at RT. Secondary antibody: Anti-Chicken IgG (GOAT) Peroxidase Conjugated Antibody 1:40,000 in ABIN925618 for 30 min at RT. Predicted/Observed Size: 25 and 50 kDa for Rabbit IgG and Serum, 25 kDa for F(c) and F(ab), 70 and 23 kDa for IgM. Rabbit F(c) migrates slightly higher.