

Datasheet for ABIN1019669
anti-CYB5R4 antibody (AA 444-458)[Go to Product page](#)

1 Image

Overview

Quantity:	100 µg
Target:	CYB5R4
Binding Specificity:	AA 444-458
Reactivity:	Rat
Host:	Goat
Clonality:	Polyclonal
Conjugate:	This CYB5R4 antibody is un-conjugated
Application:	Western Blotting (WB), ELISA

Product Details

Purpose:	Cyb5r4 (mouse aa444-458)
Immunogen:	Peptide with sequence RCQLEKLALREKRFD, from the internal region of the protein sequence according to NP_077157.2.
Sequence:	RCQLEKLALR EKRFD
Isotype:	IgG
Cross-Reactivity:	Mouse, Rat
Purification:	Purified from goat serum by ammonium sulphate precipitation followed by antigen affinity chromatography using the immunizing peptide.
Grade:	Verified

Target Details

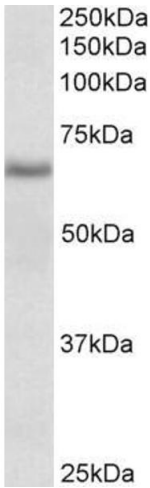
Target:	CYB5R4
Alternative Name:	Cyb5r4 (CYB5R4 Products)
Background:	Cyb5r4, cytochrome b5 reductase 4, 2810034J18Rik, B5+B5R, C79736, Cb5cb5r, Ncb5or, b5/b5r, b5b5r, N-terminal cytochrome b5 and cytochrome b5 oxidoreductase domain-containing protein, NADPH cytochrome B5 oxidoreductase, cb5/cb5R, cytochrome b-type NAD(P)H
Gene ID:	266690
NCBI Accession:	NP_077157
Pathways:	Hormone Transport , Carbohydrate Homeostasis

Application Details

Application Notes:	Western Blot: Approx 65 kDa band observed in Rat Spleen lysates (calculated MW of 55 kDa according to NP_596918.2 and 58.8 kDa according to Q68EJ0-1). Recommended concentration: 0.1-0.3 µg/mL. Peptide ELISA: antibody detection limit dilution 1:64000.
Restrictions:	For Research Use only

Handling

Format:	Liquid
Concentration:	0.5 mg/mL
Buffer:	Supplied at 0.5 mg/mL in Tris saline, 0.02 % sodium azide, pH 7.3 with 0.5 % bovine serum albumin.
Preservative:	Sodium azide
Precaution of Use:	This product contains Sodium azide: a POISONOUS AND HAZARDOUS SUBSTANCE which should be handled by trained staff only.
Handling Advice:	Minimize freezing and thawing.
Storage:	-20 °C
Storage Comment:	Aliquot and store at -20°C, with minimal freeze/thawing. A working aliquot may be refrigerated at 4°C for a few weeks and still remain viable.



Western Blotting

Image 1. ABIN1019669 (0.1µg/ml) staining of Rat Spleen lysate (35µg protein in RIPA buffer). Primary incubation was 1 hour. Detected by chemiluminescence.