

Datasheet for ABIN101997

## Goat anti-Rabbit IgG (Heavy & Light Chain) Antibody (FITC) - Preadsorbed

[Go to Product page](#)

### 2 Images

#### Overview

Quantity:	2 mg
Target:	IgG
Binding Specificity:	Heavy & Light Chain
Reactivity:	Rabbit
Host:	Goat
Clonality:	Polyclonal
Conjugate:	FITC
Application:	Flow Cytometry (FACS), Fluorescence Microscopy (FM)

#### Product Details

Immunogen:	Immunogen: Rabbit IgG whole molecule
Isotype:	IgG
Specificity:	IgG (H&L)
Characteristics:	Concentration Definition: by UV absorbance at 280 nm
Purification:	Preadsorption: Solid phase absorption
Labeling Ratio:	2.2

#### Target Details

Target:	IgG
Abstract:	<a href="#">IgG Products</a>

## Target Details

---

Target Type:	Antibody
Background:	<p>Synonyms: Goat anti-Rabbit IgG Antibody fluorescein Conjugation, Goat anti-Rabbit IgG FITC Conjugated Antibody</p> <p>Background: Anti-Rabbit IgG Antibody Fluorescein generated in goat detects rabbit IgG. Secreted as part of the adaptive immune response by plasma B cells, immunoglobulin G constitutes 75 % of serum immunoglobulins. Immunoglobulin G binds to viruses, bacteria, as well as fungi and facilitates their destruction or neutralization via agglutination (and thereby immobilizing them), activation of the compliment cascade, and opsinization for phagocytosis. The whole IgG molecule possesses both the F(c) region, recognized by high-affinity Fc receptor proteins, as well as the F(ab) region possessing the epitope-recognition site. Both heavy and light chains of the antibody molecule are present. Secondary Antibodies are available in a variety of formats and conjugate types. When choosing a secondary antibody product, consideration must be given to species and immunoglobulin specificity, conjugate type, fragment and chain specificity, level of cross-reactivity, and host-species source and fragment composition. This Anti-Rabbit IgG (H&amp;L) is conjugated to Fluorescein.</p>

## Application Details

---

Application Notes:	<p>Application Note: This product is designed for immunofluorescence microscopy, fluorescence based plate assays (FLISA) and fluorescent western blotting. This product is also suitable for multiplex analysis, including multicolor imaging, utilizing various commercial platforms.</p> <p>Flow Cytometry Dilution: User Optimized</p> <p>IF Microscopy Dilution: 1:500 - 1:2,500</p>
Comment:	Excitation/Emission wavelength: 494 nm/514 nm
Restrictions:	For Research Use only

## Handling

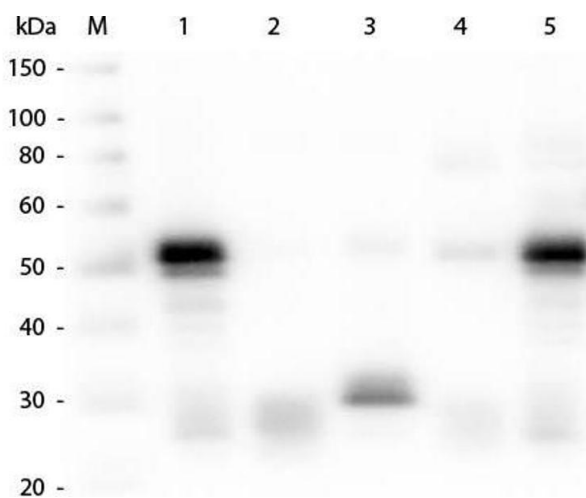
---

Format:	Lyophilized
Reconstitution:	<p>Reconstitution Volume: 1.0 mL</p> <p>Reconstitution Buffer: Restore with deionized water (or equivalent)</p>
Concentration:	2.0 mg/mL
Buffer:	<p>Buffer: 0.02 M Potassium Phosphate, 0.15 M Sodium Chloride, pH 7.2</p> <p>Stabilizer: 10 mg/mL Bovine Serum Albumin (BSA) - Immunoglobulin and Protease free</p> <p>Preservative: 0.01 % (w/v) Sodium Azide</p>

## Handling

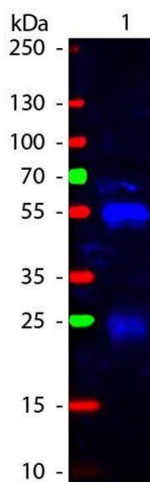
Preservative:	Sodium azide
Precaution of Use:	This product contains Sodium azide: a POISONOUS AND HAZARDOUS SUBSTANCE which should be handled by trained staff only.
Handling Advice:	Product is photosensitive and should be protected from light.
Storage:	RT,4 °C,-20 °C
Expiry Date:	12 months

## Images



### Western Blotting

**Image 1.** Western Blot of Anti-Rabbit IgG (H&L) (GOAT) Antibody . Lane M: 3 µl Molecular Ladder. Lane 1: Rabbit IgG whole molecule . Lane 2: Rabbit IgG F(ab) Fragment . Lane 3: Rabbit IgG F(c) Fragment . Lane 4: Rabbit IgM Whole Molecule . Lane 5: Normal Rabbit Serum . All samples were reduced. Load: 50 ng per lane. Block: ABIN925618 for 30 min at RT. Primary Antibody: Anti-Rabbit IgG (H&L) (GOAT) Antibody 1:1,000 for 60 min at RT. Secondary antibody: Anti-Goat IgG (DONKEY) Peroxidase Conjugated Antibody 1:40,000 in ABIN925618 for 30 min at RT. Predicted/Obsevered Size: 25 and 50 kDa for Rabbit IgG and Serum, 25 kDa for F(c) and F(ab), 70 and 23 kDa for IgM. Rabbit F(c) migrates slightly higher.



### Western Blotting

**Image 2.** Western Blot of Fluorescein conjugated Goat anti-Rabbit IgG Pre-Adsorbed secondary antibody. Lane 1: Rabbit IgG. Lane 2: none. Load: 50 ng per lane. Primary antibody: none. Secondary antibody: Fluorescein goat secondary antibody at 1:1,000 for 60 min at RT. Block: ABIN925618 for 30 min at RT. Predicted/Observed size: 25 & 55 kDa, 25 & 55 kDa for Rabbit IgG. Other band(s): none.