



Datasheet for ABIN102001

## Goat anti-Rabbit IgG (Heavy & Light Chain) Antibody - Preadsorbed



[Go to Product page](#)

### 3 Images

#### Overview

Quantity:	1 mg
Target:	IgG
Binding Specificity:	Heavy & Light Chain
Reactivity:	Rabbit
Host:	Goat
Clonality:	Polyclonal
Application:	ELISA, Immunohistochemistry (IHC), Western Blotting (WB), Lateral Flow (LF)

#### Product Details

Immunogen:	Immunogen: Anti-Rabbit IgG (H&L) was produced by repeated immunization with rabbit whole IgG molecule in goat. Immunogen Type: Native Protein
Isotype:	IgG
Specificity:	IgG (H&L)
Cross-Reactivity:	Rabbit
Characteristics:	Anti-Rabbit IgG antibody generated in goat detects specifically rabbit IgG. This secondary antibody anti-Rabbit is ideal for investigators who routinely perform ELISA, Sandwich ELISA, titration assays, western-blot, immunoprecipitation and more generally immunoassays. Concentration Definition: by UV absorbance at 280 nm
Purification:	Preadsorption: Solid phase absorption
Sterility:	Sterile filtered

## Target Details

---

Target:	IgG
Abstract:	<a href="#">IgG Products</a>
Target Type:	Antibody
Background:	<p>Synonyms: goat anti-Rabbit IgG Antibody, goat anti-Rabbit IgG Antibody pre-adsorbed, Rabbit Secondary Antibody</p> <p>Background: Anti-Rabbit IgG (H&amp;L) Antibody generated in goat detects reactivity to Rabbit IgG. Secreted as part of the adaptive immune response by plasma B cells, immunoglobulin G constitutes 75 % of serum immunoglobulins. Immunoglobulin G binds to viruses, bacteria, as well as fungi and facilitates their destruction or neutralization via agglutination (and thereby immobilizing them), activation of the compliment cascade, and opsinization for phagocytosis. The whole IgG molecule possesses both the F(c) region, recognized by high-affinity Fc receptor proteins, as well as the F(ab) region possessing the epitope-recognition site. Both the Heavy and Light chains of the antibody molecule are present. Secondary Antibodies are available in a variety of formats and conjugate types. When choosing a secondary antibody product, consideration must be given to species and immunoglobulin specificity, conjugate type, fragment and chain specificity, level of cross-reactivity, and host-species source and fragment composition.</p>

## Application Details

---

Application Notes:	<p>Immunohistochemistry Dilution: 1:500 - 1:2,000</p> <p>Application Note: Anti-Rabbit IgG (H&amp;L) is suitable for use in immunoelectrophoresis, western-blot, competitive western-blot, ELISA and competitive ELISA assays. Specific conditions for reactivity and signal detection should be optimized by the end user.</p> <p>ELISA Dilution: 1:15,000 - 1:30,000</p> <p>Western Blot Dilution: 1:500 - 1:2,000</p>
--------------------	--

Restrictions:	For Research Use only
---------------	-----------------------

## Handling

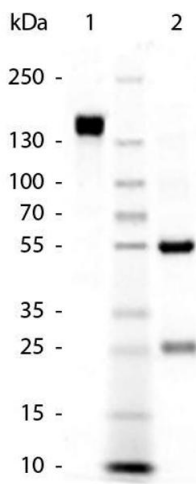
---

Format:	Liquid
Concentration:	1.0 mg/mL
Buffer:	<p>Buffer: 0.02 M Potassium Phosphate, 0.15 M Sodium Chloride, pH 7.2</p> <p>Stabilizer: None</p> <p>Preservative: 0.01 % (w/v) Sodium Azide</p>

## Handling

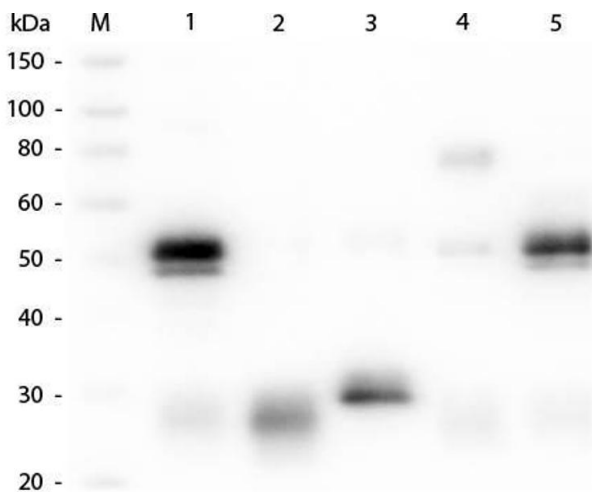
Preservative:	Sodium azide
Precaution of Use:	This product contains Sodium azide: a POISONOUS AND HAZARDOUS SUBSTANCE which should be handled by trained staff only.
Storage:	4 °C,-20 °C
Expiry Date:	12 months

## Images



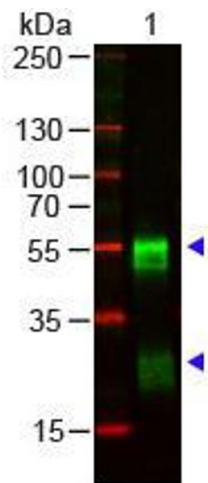
### SDS-PAGE

**Image 1.** SDS-Page of Goat anti-Rabbit IgG (H&L) Pre-adsorbed Secondary Antibody. Lane 1: Goat anti-Rabbit IgG – Non-Reduced. Lane 2: Goat anti-Rabbit IgG – Reduced. Load: 1.0 µg per lane. Predicted/Observed size: 25 & 55 kDa – Reduced, 160 kDa – Non-Reduced for Goat IgG. Other Band(s): None.



### Western Blotting

**Image 2.** Western Blot of Anti-Rabbit IgG (H&L) (GOAT) Antibody (Min X Bv, Ch, Gt, GP, Ham, Hs, Hu, Ms, Rt & Sh Serum Proteins) . Lane M: 3 µl Molecular Ladder. Lane 1: Rabbit IgG whole molecule . Lane 2: Rabbit IgG F(ab) Fragment . Lane 3: Rabbit IgG F(c) Fragment . Lane 4: Rabbit IgM Whole Molecule . Lane 5: Normal Rabbit Serum . All samples were reduced. Load: 50 ng per lane. Block: ABIN925618 for 30 min at RT. Primary Antibody: Anti-Rabbit IgG (H&L) (GOAT) Antibody (Min X Bv, Ch, Gt, GP, Ham, Hs, Hu, Ms, Rt & Sh Serum Proteins) 1:1,000 for 60 min at RT. Secondary antibody: Anti-Goat IgG (DONKEY) Peroxidase Conjugated Antibody 1:40,000 in ABIN925618 for 30 min at RT. Predicted/Obsevered Size: 25 and 50 kDa for Rabbit IgG and Serum, 25 kDa for F(c) and F(ab), 70 and 23 kDa for IgM. Rabbit F(c) migrates slightly higher.



### Western Blotting

**Image 3.** Western Blot of Goat anti-RABBIT IgG (H&L) Antibody Pre-adsorbed. Lane 1: Rabbit IgG. Lane 2: None. Load: 100 ng per lane. Primary antibody: RABBIT IgG (H&L) Antibody Pre-adsorbed at 1:1,000 for overnight at 4°C. Secondary antibody: 800 goat secondary antibody 1:20,000 for 30 min at RT. Block: ABIN925618 for 30 min at RT. Predicted/Observed size: 55 and 28 kDa, 55 and 28 kDa for Rabbit IgG. Other band(s): none.