

Datasheet for ABIN102024

Sheep anti-Rabbit IgG (Heavy & Light Chain) Antibody (HRP)[Go to Product page](#)**2** Images

Overview

Quantity:	2 mg
Target:	IgG
Binding Specificity:	Heavy & Light Chain
Reactivity:	Rabbit
Host:	Sheep
Clonality:	Polyclonal
Conjugate:	HRP
Application:	ELISA, Immunohistochemistry (IHC), Western Blotting (WB), Dot Blot (DB), Immunoelectron Microscopy (IEM)

Product Details

Immunogen:	Anti-Rabbit IgG was produced by repeated immunization with rabbit whole IgG molecule in sheep.
Isotype:	IgG
Specificity:	IgG (H&L)
Characteristics:	Anti-Rabbit IgG peroxidase conjugated antibody generated in sheep detects specifically rabbit IgG. This secondary peroxidase conjugated antibody anti-Rabbit is ideal for investigators who routinely perform titration assays, western-blot, immunoprecipitation and more generally immunoassays. Concentration Definition: by UV absorbance at 280 nm

Target Details

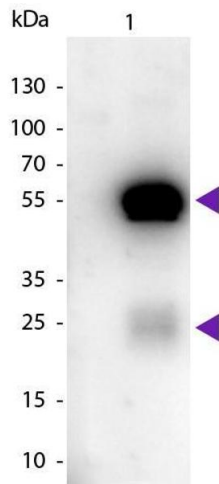
Target:	IgG
Abstract:	IgG Products
Target Type:	Antibody
Background:	Synonyms: Rabbit Antibody peroxidase conjugated, Sh-a-Rabbit peroxidase conjugated IgG, Rabbit proxidase conjugated Antibody in Sheep, Rabbit Secondary peroxidase conjugated Antibody, peroxidase.

Application Details

Application Notes:	Anti-Rabbit IgG peroxidase conjugated antibody is suitable for immunoblotting (western or dot blot), ELISA, immunoperoxidase electron microscopy and immunohistochemistry as well as other peroxidase-antibody based enzymatic assays requiring lot-to-lot consistency.
Restrictions:	For Research Use only

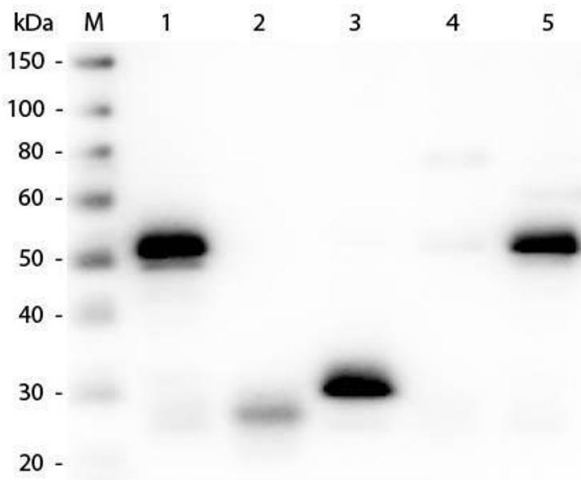
Handling

Format:	Lyophilized
Reconstitution:	Restore with deionized water (or equivalent)
Concentration:	2.2 mg/mL
Buffer:	0.02 M Potassium Phosphate, 0.15 M Sodium Chloride, pH 7.2
Preservative:	Gentamicin sulfate
Handling Advice:	Do NOT add Sodium Azide! Use of Sodium Azide will inhibit enzyme activity of horseradish peroxidase.
Storage:	4 °C



Western Blotting

Image 1. Western blot of Peroxidase Conjugated Sheep Anti-Rabbit IgG secondary antibody. Lane 1: Rabbit IgG. Lane 2: None. Load: 50 ng per lane. Primary antibody: None. Secondary antibody: Peroxidase sheep secondary antibody at 1:1,000 for 60 min at RT. Blocking: ABIN925618 for 30 min at RT. Predicted/Observed size: 25 & 55 kDa, 25 & 55 kDa for Rabbit IgG. Other band(s): None.



Western Blotting

Image 2. Western Blot of Anti-Rabbit IgG (H&L) (SHEEP) Antibody (Min X Hu, Gt, Ms Serum Proteins) . Lane M: 3 µl Molecular Ladder. Lane 1: Rabbit IgG whole molecule . Lane 2: Rabbit IgG F(ab) Fragment . Lane 3: Rabbit IgG F(c) Fragment . Lane 4: Rabbit IgM Whole Molecule . Lane 5: Normal Rabbit Serum . All samples were reduced. Load: 50 ng per lane. Block: ABIN925618 for 30 min at RT. Primary Antibody: Anti-Rabbit IgG (H&L) (SHEEP) Antibody (Min X Hu, Gt, Ms Serum Proteins) 1:3,000 for 60 min at RT. Secondary antibody: Anti-Sheep IgG (DONKEY) Peroxidase Conjugated Antibody 1:40,000 in ABIN925618 for 30 min at RT. Predicted/Obsevered Size: 25 and 50 kDa for Rabbit IgG and Serum, 25 kDa for F(c) and F(ab), 70 and 23 kDa for IgM. Rabbit F(c) migrates slightly higher.