

Datasheet for ABIN102079

Goat anti-Rabbit IgG (Fc Region) Antibody - Preadsorbed



[Go to Product page](#)

3 Images

Overview

Quantity:	2 mg
Target:	IgG
Binding Specificity:	Fc Region
Reactivity:	Rabbit
Host:	Goat
Clonality:	Polyclonal
Application:	ELISA, Immunohistochemistry (IHC), Western Blotting (WB)

Product Details

Immunogen:	Immunogen: Anti Rabbit IgG F(c) was produced by repeated immunization with rabbit IgG F(c) fragment in goat. Immunogen Type: Native Protein
Isotype:	IgG
Cross-Reactivity:	Rabbit
Characteristics:	Anti-Rabbit IgG F(c) antibody generated in goat detects specifically rabbit IgG F(c). This secondary antibody anti-Rabbit is ideal for investigators who routinely perform ELISA, Sandwich ELISA, titration assays, western-blot, immunoprecipitation and more generally immunoassays. Synonyms: Rabbit Antibody F(c), Gt-a-Rabbit IgG F(c), Rabbit Antibody in Goat, Rabbit F(c) Secondary Antibody
Purification:	Preadsorption: Solid phase absorption
Sterility:	Sterile filtered

Target Details

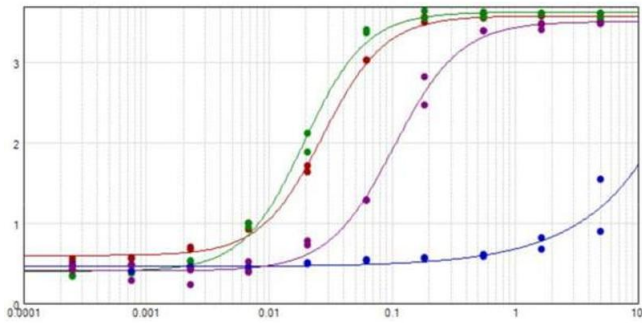
Target:	IgG
Abstract:	IgG Products
Target Type:	Antibody
Background:	<p>Synonyms: goat anti-Rabbit F(c) Antibody, Gt-a-Rabbit IgG F(c), Rabbit Antibody in Goat, Goat anti-Rabbit F(c) fragment Secondary Antibody</p> <p>Background: Anti-Rabbit IgG F(c) generated in goat is a proteolytic fragment of immunoglobulin G (IgG) obtained by limited digestion with the enzyme papain under controlled conditions of temperature, time and pH . Receptors bind the Fc portion of rabbit IgG and often this fragment is removed from immunoglobulins to minimize receptor binding and lower background reactivity.</p>

Application Details

Application Notes:	<p>Immunohistochemistry Dilution: 1:1,000 - 1:5,000</p> <p>Application Note: Anti-Rabbit IgG F(c) is suitable for use in immunoelectrophoresis, western-blot, competitive western-blot, ELISA and competitive ELISA assays. Specific conditions for reactivity and signal detection should be optimized by the end user.</p> <p>ELISA Dilution: 1:20,000 - 1:100,000</p> <p>Western Blot Dilution: 1:2,000 - 1:10,000</p>
Comment:	Concentration (detection method): 2.0 mg/mL (by UV absorbance at 280 nm)
Restrictions:	For Research Use only

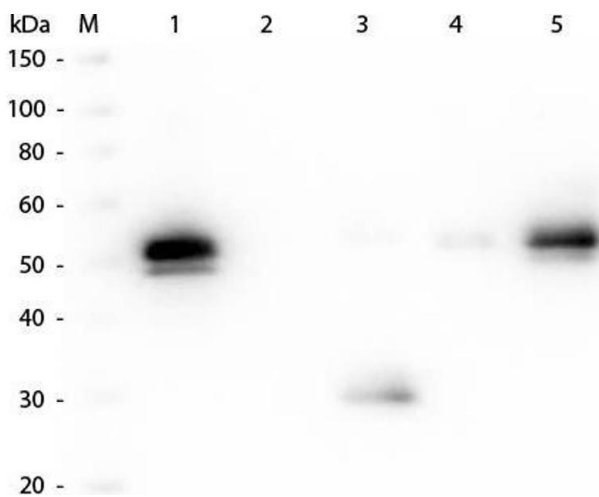
Handling

Format:	Liquid
Concentration:	2.0 mg/mL
Buffer:	<p>Buffer: 0.02 M Potassium Phosphate, 0.15 M Sodium Chloride, pH 7.2</p> <p>Stabilizer: None</p> <p>Preservative: 0.01 % (w/v) Sodium Azide</p>
Preservative:	Sodium azide
Precaution of Use:	This product contains Sodium azide: a POISONOUS AND HAZARDOUS SUBSTANCE which should be handled by trained staff only.
Storage:	4 °C, -20 °C



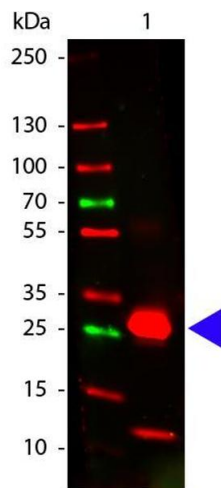
ELISA

Image 1. ELISA results of purified Goat Anti-Rabbit IgG F(c) Antibody (Min x Human serum proteins) tested against purified Rabbit IgG F(c) (Red Line), Rabbit IgG (Green Line), and Human IgG (Blue Line). Each well was coated in duplicate with 1.0 µg of antigen. The starting dilution of antibody was 5µg/ml and the X-axis represents the Log10 of a 3-fold dilution. This titration is a 4-parameter curve fit where the IC50 is defined as the titer of the antibody. Assay performed using Blocking buffer , Donkey Anti-Goat IgG HRP , and TMB substrate .



Western Blotting

Image 2. Western Blot of Anti-Rabbit IgG F(c) (GOAT) Antibody . Lane M: 3 µl Molecular Ladder. Lane 1: Rabbit IgG whole molecule . Lane 2: Rabbit IgG F(ab) Fragment . Lane 3: Rabbit IgG F(c) Fragment . Lane 4: Rabbit IgM Whole Molecule . Lane 5: Normal Rabbit Serum . All samples were reduced. Load: 50 ng of IgG, F(ab), IgM and Serum, 100 ng of F(c). Block: ABIN925618 for 30 min at RT. Primary Antibody: Anti-Rabbit IgG F(c) (GOAT) Antibody 1:2,000 for 60 min at RT. Secondary antibody: Anti-Goat IgG (DONKEY) Peroxidase Conjugated Antibody 1:40,000 in ABIN925618 for 30 min at RT. Predicted/Observed Size: 25 and 50 kDa for Rabbit IgG and Serum, 25 kDa for F(c) and F(ab), 70 and 23 kDa for IgM. Rabbit F(c) migrates slightly higher.



Western Blotting

Image 3. Western Blot of Goat anti-Rabbit Fc antibody. Lane 1: Rabbit Fc. Lane 2: None. Load: 100 ng per lane. Primary antibody: Rabbit Fc antibody at 1:1,000 for overnight at 4°C. Secondary antibody: 649 goat secondary antibody at 1:20,000 for 30 min at RT. Block: ABIN925618 for 30 min at RT. Predicted/Observed size: 28 kDa, 28 kDa for Rabbit Fc. Other band(s): Rabbit Fc splice variants and isoforms.