

Datasheet for ABIN102091

Chicken anti-Rat IgG (Heavy & Light Chain) Antibody (HRP)[Go to Product page](#)**1** Image

Overview

Quantity:	1 mg
Target:	IgG
Binding Specificity:	Heavy & Light Chain
Reactivity:	Rat
Host:	Chicken
Clonality:	Polyclonal
Conjugate:	HRP
Application:	ELISA

Product Details

Immunogen:	Rat IgG whole molecule
Isotype:	IgG
Specificity:	IgG (H&L)
Characteristics:	Concentration Definition: by UV absorbance at 280 nm

Target Details

Target:	IgG
Abstract:	IgG Products
Target Type:	Antibody
Background:	Synonyms: Immunoglobulin G, Rat IgG antibody, Anti Rat IgG

Application Details

Application Notes: Anti-RAT IgG antibody, Peroxidase Conjugate has been assayed against 1.0 µg of Rat IgG in a standard capture ELISA using ABTS (2,2'-azino-bis-[3-ethylbenthiazoline-6-sulfonic acid] substrate for 30 minutes at room temperature. A working dilution of 1:2,000 to 1:12,000 of the reconstitution concentration is suggested for this product. Optimal concentration in other immunoassays should be determined by researcher.

Restrictions: For Research Use only

Handling

Format: Lyophilized

Reconstitution: Restore with deionized water (or equivalent)

Concentration: 1.0 mg/mL

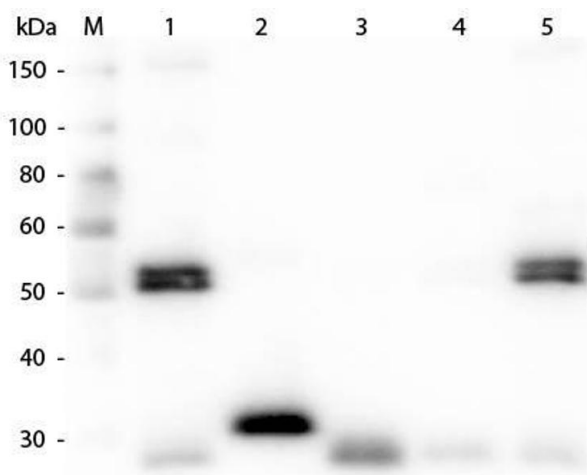
Buffer: 0.02 M Potassium Phosphate, 0.15 M Sodium Chloride, pH 7.2

Preservative: Gentamicin sulfate

Handling Advice: Do NOT add Sodium Azide! Use of Sodium Azide will inhibit enzyme activity of horseradish peroxidase.

Storage: 4 °C

Images



Western Blotting

Image 1. Western Blot of Anti-Rat IgG (H&L) (CHICKEN) Antibody . Lane M: 3 µl Molecular Ladder. Lane 1: Rat IgG whole molecule . Lane 2: Rat IgG F(c) Fragment . Lane 3: Rat IgG Fab Fragment . Lane 4: Rat IgM Whole Molecule . Lane 5: Rat Serum . All samples were reduced. Load: 50 ng per lane. Block: ABIN925618 for 30 min at RT. Primary Antibody: Anti-Rat IgG (H&L) (CHICKEN) Antibody 1:1,000 for 60 min at RT. Secondary Antibody: Anti-Chicken IgG (GOAT) Peroxidase Conjugated Antibody 1:40,000 in ABIN925618 for 30 min at RT. Predicted/Observed Size: 25 and 55 kDa for Rat IgG and Serum, 25 kDa for F(c) and Fab, 78 and 25 kDa for IgM. Rat F(c) migrates slightly higher.