

Datasheet for ABIN102096

**Donkey anti-Rat IgG (Heavy & Light Chain) Antibody (Biotin) -
Preadsorbed**[Go to Product page](#)**1** Image

Overview

Quantity:	2 mg
Target:	IgG
Binding Specificity:	Heavy & Light Chain
Reactivity:	Rat
Host:	Donkey
Clonality:	Polyclonal
Conjugate:	Biotin
Application:	ELISA, Immunohistochemistry (IHC), Western Blotting (WB)

Product Details

Immunogen:	Immunogen: Rat IgG whole molecule
Isotype:	IgG
Specificity:	IgG (H&L)
Characteristics:	Concentration Definition: by UV absorbance at 280 nm
Purification:	Preadsorption: immunoaffinity chromatography using Rat IgG coupled to agarose beads

Target Details

Target:	IgG
Abstract:	IgG Products
Target Type:	Antibody

Target Details

Background:	<p>Synonyms: Donkey Anti Rat IgG Biotin Conjugated Antibody, Donkey Anti-Rat IgG Antibody Biotin Conjugation</p> <p>Background: Anti-Rat IgG (H&L) generated in donkey detects rat Immunoglobulin G. Both the Heavy and Light chains of the antibody molecule are present. Representing approximately 75 % of serum immunoglobulins, IgG is the most abundant antibody isotype found in the circulation. IgG molecules are synthesized and secreted by plasma B cells. Secondary Antibodies are available in a variety of formats and conjugate types. When choosing a secondary antibody product, consideration must be given to species and immunoglobulin specificity, conjugate type, fragment and chain specificity, level of cross-reactivity, and host-species source and fragment composition. This Anti-Rat IgG is conjugated to biotin.</p>
-------------	---

Application Details

Application Notes:	<p>Immunohistochemistry Dilution: 1:1,000 - 1:5,000</p> <p>Application Note: This product has been assayed against 1.0 µg of Rat IgG in a standard capture ELISA using Peroxidase Conjugated Streptavidin #S000-03 and ABTS (2,2'-azino-bis-[3-ethylbenthiiazoline-6-sulfonic acid]) code # ABTS-100 as a substrate for 30 minutes at room temperature. A working dilution of 1:100,000 to 1:500,000 of the reconstitution concentration is suggested for this product.</p> <p>ELISA Dilution: 1:20,000 - 1:100,000</p> <p>Western Blot Dilution: 1:2,000 - 1:10,000</p>
--------------------	--

Restrictions:	For Research Use only
---------------	-----------------------

Handling

Format:	Lyophilized
Reconstitution:	Reconstitution Volume: 1.0 mL Reconstitution Buffer: Restore with deionized water (or equivalent)
Concentration:	2.0 mg/mL
Buffer:	Buffer: 0.02 M Potassium Phosphate, 0.15 M Sodium Chloride, pH 7.2 Stabilizer: 10 mg/mL Bovine Serum Albumin (BSA) - Immunoglobulin and Protease free Preservative: 0.01 % (w/v) Sodium Azide
Preservative:	Sodium azide
Precaution of Use:	This product contains Sodium azide: a POISONOUS AND HAZARDOUS SUBSTANCE which should be handled by trained staff only.

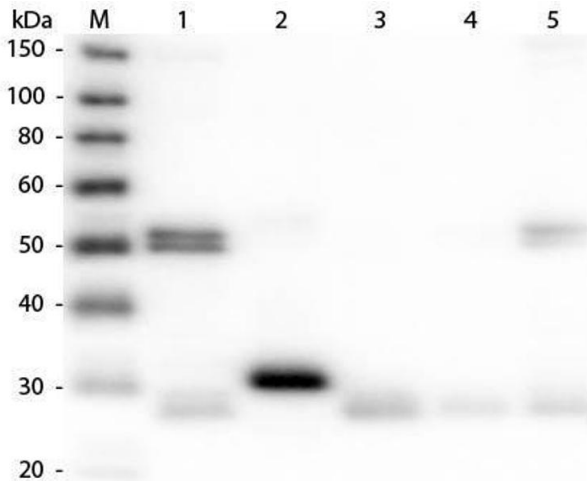
Handling

Handling Advice: Aliquot to Avoid repeated freezing and thawing.

Storage: RT,4 °C,-20 °C

Expiry Date: 12 months

Images



Western Blotting

Image 1. Western Blot of Anti-Rat IgG (H&L) (DONKEY) Antibody (Min X Bv Ch Gt GP Ham Hs Hu Ms Rb & Sh Serum Proteins) . Lane M: 3 μ l Molecular Ladder. Lane 1: Rat IgG whole molecule . Lane 2: Rat IgG F(c) Fragment . Lane 3: Rat IgG Fab Fragment . Lane 4: Rat IgM Whole Molecule . Lane 5: Rat Serum . All samples were reduced. Load: 50 ng per lane. Block: ABIN925618 for 30 min at RT. Primary Antibody: Anti-Rat IgG (H&L) (DONKEY) Antibody (Min X Bv Ch Gt GP Ham Hs Hu Ms Rb & Sh Serum Proteins) 1:10,000 for 60 min at RT. Secondary Antibody: Anti-Donkey IgG (GOAT) Peroxidase Conjugated Antibody 1:40,000 in ABIN925618 for 30 min at RT. Predicted/Observed Size: 25 and 55 kDa for Rat IgG and Serum, 25 kDa for F(c) and Fab, 78 and 25 kDa for IgM. Rat F(c) migrates slightly higher.