

Datasheet for ABIN102117

**Goat anti-Rat IgG (Heavy & Light Chain) Antibody -
Preadsorbed**[Go to Product page](#)

1 Image

2 Publications

Overview

Quantity:	2 mg
Target:	IgG
Binding Specificity:	Heavy & Light Chain
Reactivity:	Rat
Host:	Goat
Clonality:	Polyclonal
Application:	ELISA, Immunohistochemistry (IHC), Western Blotting (WB)

Product Details

Immunogen:	Immunogen: Rat IgG whole molecule
Isotype:	IgG
Specificity:	IgG (H&L)
Characteristics:	<p>Anti-RAT IgG (H&L) (GOAT) Antibody generated in sheep detects specifically rat IgG whole molecule. Anti-rat IgG antibody is ideal for investigators involved in serum protein component research.</p> <p>Concentration Definition: by UV absorbance at 280 nm</p>
Purification:	Preadsorption: immunoaffinity chromatography using Rat IgG coupled to agarose beads
Sterility:	Sterile filtered

Target Details

Target:	IgG
---------	-----

Target Details

Abstract:	IgG Products
Target Type:	Antibody
Background:	<p>Synonyms: Goat anti-rat IgG, Rat antibody, rat antibodies, immunoglobulin</p> <p>Background: Anti-RAT IgG (H&L) (GOAT) Antibody generated in goat detects specifically rat IgG whole molecule. Secreted as part of the adaptive immune response by plasma B cells, immunoglobulin G constitutes 75 % of serum immunoglobulins. Immunoglobulin G binds to viruses, bacteria, as well as fungi and facilitates their destruction or neutralization via agglutination (and thereby immobilizing them), activation of the complement cascade, and opsinization for phagocytosis. The whole IgG molecule possesses both the F(c) region, recognized by high-affinity Fc receptor proteins, as well as the F(ab) region possessing the epitope-recognition site. Both the Heavy and Light chains of the antibody molecule are present. Secondary Antibodies are available in a variety of formats and conjugate types. When choosing a secondary antibody product, consideration must be given to species and immunoglobulin specificity, conjugate type, fragment and chain specificity, level of cross-reactivity, and host-species source and fragment composition. Anti-rat IgG antibody is ideal for investigators involved in serum protein component research.</p>

Application Details

Application Notes:	<p>Immunohistochemistry Dilution: 1:1,000-1:5,000</p> <p>Application Note: Anti-RAT IgG (H&L) (GOAT) Antibody is suitable for ELISA, Western Blot and Immunohistochemistry applications. Specific conditions for reactivity should be optimized by the end user.</p> <p>ELISA Dilution: 1:20,000-1:100,000</p> <p>Western Blot Dilution: 1:2,000-1:10,000</p>
--------------------	---

Restrictions:	For Research Use only
---------------	-----------------------

Handling

Format:	Liquid
Concentration:	2.0 mg/mL
Buffer:	<p>Buffer: 0.02 M Potassium Phosphate, 0.15 M Sodium Chloride, pH 7.2</p> <p>Stabilizer: None</p> <p>Preservative: 0.01 % (w/v) Sodium Azide</p>
Preservative:	Sodium azide

Handling

Precaution of Use: This product contains Sodium azide: a POISONOUS AND HAZARDOUS SUBSTANCE which should be handled by trained staff only.

Storage: 4 °C, -20 °C

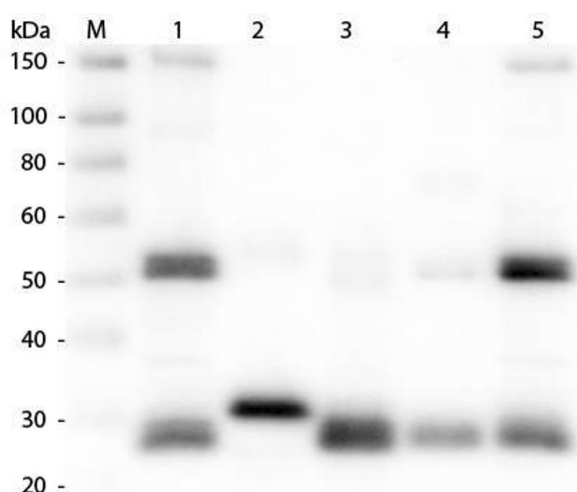
Expiry Date: 12 months

Publications

Product cited in: Scekcic-Zahirovic, Oussini, Mersmann, Drenner, Wagner, Sun, Allmeroth, Dieterlé, Sinniger, Dirrig-Grosch, René, Dormann, Haass, Ludolph, Lagier-Tourenne, Storkebaum, Dupuis: "Motor neuron intrinsic and extrinsic mechanisms contribute to the pathogenesis of FUS-associated amyotrophic lateral sclerosis." in: **Acta neuropathologica**, Vol. 133, Issue 6, pp. 887-906, (2017) ([PubMed](#)).

Zhang, Fu, Chen, Ren, Qu, Zhang, Yao, Yang: "Lacidipine attenuates apoptosis via a caspase-3 dependent pathway in human kidney cells." in: **Cellular physiology and biochemistry : international journal of experimental cellular physiology, biochemistry, and pharmacology**, Vol. 32, Issue 4, pp. 1040-9, (2014) ([PubMed](#)).

Images



Western Blotting

Image 1. Western Blot of Anti-Rat IgG (H&L) (GOAT) Antibody . Lane M: 3 µl Molecular Ladder. Lane 1: Rat IgG whole molecule . Lane 2: Rat IgG F(c) Fragment . Lane 3: Rat IgG Fab Fragment . Lane 4: Rat IgM Whole Molecule . Lane 5: Rat Serum . All samples were reduced. Load: 50 ng per lane. Block: ABIN925618 for 30 min at RT. Primary Antibody: Anti-Rat IgG (H&L) (GOAT) Antibody 1:1,000 for 60 min at RT. Secondary Antibody: Anti-Goat IgG (DONKEY) Peroxidase Conjugated Antibody 1:40,000 in ABIN925618 for 30 min at RT. Predicted/Obsevered Size: 25 and 55 kDa for Rat IgG and Serum, 25 kDa for F(c) and Fab, 78 and 25 kDa for IgM. Rat F(c) migrates slightly higher.