

Datasheet for ABIN102123

Goat anti-Rat IgG (Heavy & Light Chain) Antibody (HRP)[Go to Product page](#)**1** Image

Overview

Quantity:	2 mg
Target:	IgG
Binding Specificity:	Heavy & Light Chain
Reactivity:	Rat
Host:	Goat
Clonality:	Polyclonal
Conjugate:	HRP
Application:	ELISA, Immunohistochemistry (IHC), Western Blotting (WB), Dot Blot (DB), Immunoelectron Microscopy (IEM)

Product Details

Immunogen:	Anti-Rat IgG whole molecule was produced by repeated immunization with Rat IgG whole molecule in goat.
Isotype:	IgG
Specificity:	IgG (H&L)
Characteristics:	<p>Anti-Rat IgG whole molecule antibody generated in goat detects specifically Rat IgG whole molecule. This secondary antibody anti-Rat is ideal for investigators who routinely perform ELISA, Sandwich ELISA, titration assays, western-blot, immunoprecipitation and more generally immunoassays.</p> <p>Concentration Definition: by UV absorbance at 280 nm</p>

Target Details

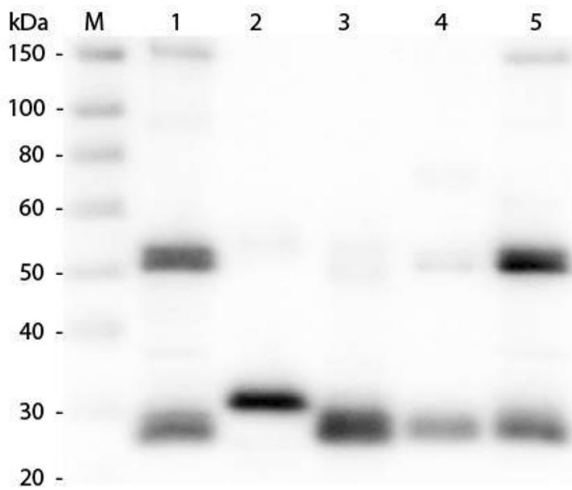
Target:	IgG
Abstract:	IgG Products
Target Type:	Antibody
Background:	Synonyms: Rat Antibody, Gt-a-Rat IgG, Rat Antibody in Goat, Rat Secondary Antibody

Application Details

Application Notes:	Anti-Rat IgG whole molecule is suitable for immunoblotting (western or dot blot), ELISA, immunoperoxidase electron microscopy and immunohistochemistry as well as other peroxidase-antibody based enzymatic assays requiring lot-to-lot consistency.
Restrictions:	For Research Use only

Handling

Format:	Lyophilized
Reconstitution:	Restore with deionized water (or equivalent)
Concentration:	2.0 mg/mL
Buffer:	0.02 M Potassium Phosphate, 0.15 M Sodium Chloride, pH 7.2
Preservative:	Gentamicin sulfate
Handling Advice:	Do NOT add Sodium Azide! Use of Sodium Azide will inhibit enzyme activity of horseradish peroxidase.
Storage:	4 °C



Western Blotting

Image 1. Western Blot of Anti-Rat IgG (H&L) (GOAT) Antibody . Lane M: 3 μ l Molecular Ladder. Lane 1: Rat IgG whole molecule . Lane 2: Rat IgG F(c) Fragment . Lane 3: Rat IgG Fab Fragment . Lane 4: Rat IgM Whole Molecule . Lane 5: Rat Serum . All samples were reduced. Load: 50 ng per lane. Block: ABIN925618 for 30 min at RT. Primary Antibody: Anti-Rat IgG (H&L) (GOAT) Antibody 1:1,000 for 60 min at RT. Secondary Antibody: Anti-Goat IgG (DONKEY) Peroxidase Conjugated Antibody 1:40,000 in ABIN925618 for 30 min at RT. Predicted/Obsevered Size: 25 and 55 kDa for Rat IgG and Serum, 25 kDa for F(c) and Fab, 78 and 25 kDa for IgM. Rat F(c) migrates slightly higher.