

Datasheet for ABIN102124

**Goat anti-Rat IgG (Heavy & Light Chain) Antibody (Texas Red (TR)) - Preadsorbed**[Go to Product page](#)**1** Image

## Overview

Quantity:	2 mg
Target:	IgG
Binding Specificity:	Heavy & Light Chain
Reactivity:	Rat
Host:	Goat
Clonality:	Polyclonal
Conjugate:	Texas Red (TR)
Application:	Flow Cytometry (FACS), FLISA, Fluorescence Microscopy (FM)

## Product Details

Immunogen:	Immunogen: Rat IgG whole molecule
Isotype:	IgG
Specificity:	IgG (H&L)
Characteristics:	Concentration Definition: by UV absorbance at 280 nm
Purification:	Preadsorption: Solid phase absorption
Labeling Ratio:	5.5

## Target Details

Target:	IgG
Abstract:	<a href="#">IgG Products</a>

## Target Details

---

Target Type:	Antibody
Background:	<p>Synonyms: Goat Anti Rat IgG Texas Red™ Conjugated Antibody, Goat Anti-Rat IgG Antibody Texas Red™ Conjugation</p> <p>Background: Anti-Rat IgG (H&amp;L) Texas Red™ Antibody generated in goat detects reactivity to Rat IgG. Secreted as part of the adaptive immune response by plasma B cells, immunoglobulin G constitutes 75 % of serum immunoglobulins. Immunoglobulin G binds to viruses, bacteria, as well as fungi and facilitates their destruction or neutralization via agglutination (and thereby immobilizing them), activation of the compliment cascade, and opsinization for phagocytosis. The whole IgG molecule possesses both the F(c) region, recognized by high-affinity Fc receptor proteins, as well as the F(ab) region possessing the epitope-recognition site. Both the Heavy and Light chains of the antibody molecule are present. Secondary Antibodies are available in a variety of formats and conjugate types. When choosing a secondary antibody product, consideration must be given to species and immunoglobulin specificity, conjugate type, fragment and chain specificity, level of cross-reactivity, and host-species source and fragment composition. This Anti-Rat IgG is conjugated to Texas Red™.</p>

## Application Details

---

Application Notes:	<p>Application Note: This product is designed for immunofluorescence microscopy, fluorescence based plate assays (FLISA) and fluorescent western blotting. This product is also suitable for multiplex analysis, including multicolor imaging, utilizing various commercial platforms.</p> <p>FLISA Dilution: 1:10,000 - 1:50,000</p> <p>Flow Cytometry Dilution: 1:500 - 1:2,500</p> <p>IF Microscopy Dilution: 1:1,000 - 1:5,000</p>
--------------------	--

Comment:	Texas Red™ is a registered trademark of Molecular Probes Inc.
----------	---

Restrictions:	For Research Use only
---------------	-----------------------

## Handling

---

Format:	Lyophilized
Reconstitution:	<p>Reconstitution Volume: 1.0 mL</p> <p>Reconstitution Buffer: Restore with deionized water (or equivalent)</p>
Concentration:	2.0 mg/mL
Buffer:	<p>Buffer: 0.02 M Potassium Phosphate, 0.15 M Sodium Chloride, pH 7.2</p> <p>Stabilizer: 10 mg/mL Bovine Serum Albumin (BSA) - Immunoglobulin and Protease free</p>

## Handling

Preservative: 0.01 % (w/v) Sodium Azide

Preservative: Sodium azide

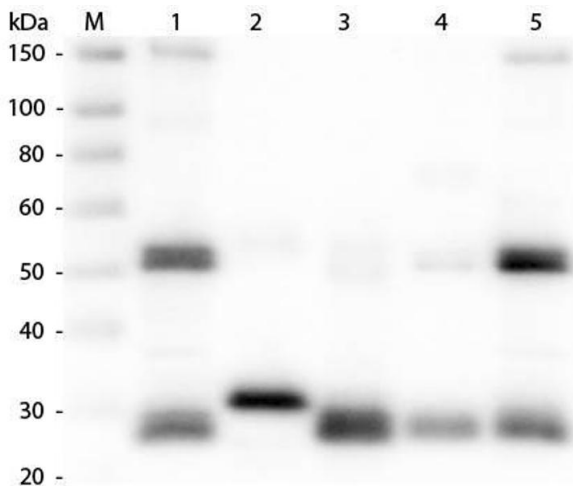
Precaution of Use: This product contains Sodium azide: a POISONOUS AND HAZARDOUS SUBSTANCE which should be handled by trained staff only.

Handling Advice: Product is photosensitive and should be protected from light.

Storage: RT, 4 °C, -20 °C

Expiry Date: 12 months

## Images



### Western Blotting

**Image 1.** Western Blot of Anti-Rat IgG (H&L) (GOAT) Antibody . Lane M: 3 µl Molecular Ladder. Lane 1: Rat IgG whole molecule . Lane 2: Rat IgG F(c) Fragment . Lane 3: Rat IgG Fab Fragment . Lane 4: Rat IgM Whole Molecule . Lane 5: Rat Serum . All samples were reduced. Load: 50 ng per lane. Block: ABIN925618 for 30 min at RT. Primary Antibody: Anti-Rat IgG (H&L) (GOAT) Antibody 1:1,000 for 60 min at RT. Secondary Antibody: Anti-Goat IgG (DONKEY) Peroxidase Conjugated Antibody 1:40,000 in ABIN925618 for 30 min at RT. Predicted/Observed Size: 25 and 55 kDa for Rat IgG and Serum, 25 kDa for F(c) and Fab, 78 and 25 kDa for IgM. Rat F(c) migrates slightly higher.