

Datasheet for ABIN102188

**Rabbit anti-Rat IgG (F(ab')₂ Region) Antibody (Biotin) -
Preadsorbed**[Go to Product page](#)**1** Image

Overview

Quantity:	2 mg
Target:	IgG
Binding Specificity:	F(ab') ₂ Region
Reactivity:	Rat
Host:	Rabbit
Clonality:	Polyclonal
Conjugate:	Biotin
Application:	ELISA, Immunohistochemistry (IHC), Western Blotting (WB)

Product Details

Immunogen:	Immunogen: Rat IgG F(ab') ₂ fragment
Isotype:	IgG
Specificity:	IgG F(ab') ₂
Characteristics:	Concentration Definition: by UV absorbance at 280 nm
Purification:	Preadsorption: Solid phase absorption

Target Details

Target:	IgG
Abstract:	IgG Products
Target Type:	Antibody

Target Details

Background: Synonyms: Rabbit Anti Rat IgG F(ab')₂ Biotin Conjugated Antibody, Rabbit Anti-Rat IgG Fab₂ Biotin Conjugated Antibody, Rabbit Anti-Rat IgG Fab₂ Fragment Antibody Biotin Conjugation

Background: Anti-Rat IgG F(ab')₂ Antibody generated in rabbit recognizes the dimeric Fab portion of the rat IgG molecule. Rat IgG F(ab')₂ is a proteolytic fragment of immunoglobulin G (IgG) obtained by limited digestion with the enzyme pepsin under controlled conditions of temperature, time and pH. F(ab')₂ Molecules lack the Fc portion of IgG and therefore receptors that bind rat IgG F(c) will not bind rat IgG F(ab')₂ Molecules. Secondary Antibodies are available in a variety of formats and conjugate types. When choosing a secondary antibody product, consideration must be given to species and immunoglobulin specificity, conjugate type, fragment and chain specificity, level of cross-reactivity, and host-species source and fragment composition. This Anti-Rat IgG F(ab')₂ is conjugated to Biotin.

Application Details

Application Notes: Immunohistochemistry Dilution: 1:1,000 - 1:5,000

Application Note: Anti-Rat IgG F(ab')₂ antibody is suitable for use in ELISA, immunohistochemistry, and western blot. Specific conditions for reactivity should be optimized by the end user.

ELISA Dilution: 1:20,000 - 1:100,000

Western Blot Dilution: 1:2,000 - 1:10,000

Restrictions: For Research Use only

Handling

Format: Lyophilized

Reconstitution: Reconstitution Volume: 1.0 mL
Reconstitution Buffer: Restore with deionized water (or equivalent)

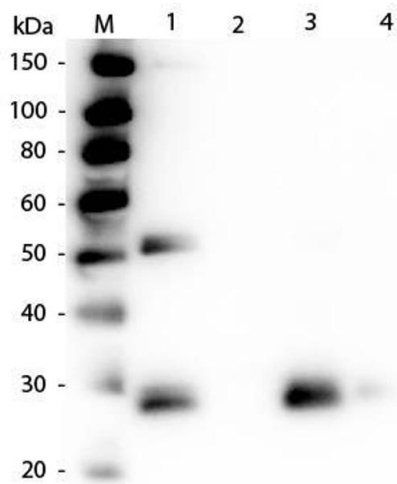
Concentration: 2.0 mg/mL

Buffer: Buffer: 0.02 M Potassium Phosphate, 0.15 M Sodium Chloride, pH 7.2

Handling Advice: Aliquot to Avoid repeated freezing and thawing.

Storage: RT, 4 °C, -20 °C

Expiry Date: 12 months



Western Blotting

Image 1. Western Blot of Anti-Rat IgG F(ab')₂ (RABBIT) Antibody . Lane M: 3 µl Molecular Ladder. Lane 1: Rat IgG whole molecule . Lane 2: Rat IgG F(c) Fragment . Lane 3: Rat IgG Fab Fragment . Lane 4: Rat IgM Whole Molecule . All samples were reduced. Load: 50 ng per lane. Block: ABIN925618 for 30 min at RT. Primary Antibody: Anti-Rat IgG F(ab')₂ (RABBIT) Antibody 1:1,000 for 60 min at RT. Secondary Antibody: Anti-Rabbit IgG (GOAT) Peroxidase Conjugated Antibody 1:40,000 in ABIN925618 for 30 min at RT. Predicted/Observed Size: 25 and 55 kDa for Rat IgG, 25 kDa for F(c) and Fab, 78 and 25 kDa for IgM. Rat F(c) migrates slightly higher.