

Datasheet for ABIN102194

**Rabbit anti-Rat IgG (F(ab')₂ Region) Antibody (Texas Red (TR))
- Preadsorbed**[Go to Product page](#)**1** Image

Overview

Quantity:	2 mg
Target:	IgG
Binding Specificity:	F(ab') ₂ Region
Reactivity:	Rat
Host:	Rabbit
Clonality:	Polyclonal
Conjugate:	Texas Red (TR)
Application:	Flow Cytometry (FACS), FLISA, Fluorescence Microscopy (FM)

Product Details

Immunogen:	Immunogen: Rat IgG F(ab') ₂ fragment
Isotype:	IgG
Specificity:	IgG F(ab') ₂
Characteristics:	Concentration Definition: by UV absorbance at 280 nm
Purification:	Preadsorption: Solid phase absorption
Labeling Ratio:	2.1

Target Details

Target:	IgG
Abstract:	IgG Products

Target Details

Target Type:	Antibody
Background:	<p>Synonyms: Rabbit Anti-Rat IgG F(ab')₂ Texas Red™ Conjugated Antibody, Rabbit Anti-Rat IgG Fab2 Texas Red™ Conjugated Antibody, Rabbit Anti-Rat IgG Fab2 Fragment Antibody Texas Red™ Conjugation</p> <p>Background: Anti-Rat IgG F(ab')₂ Antibody generated in rabbit recognizes the dimeric Fab portion of the rat IgG molecule. Rat IgG F(ab')₂ is a proteolytic fragment of immunoglobulin G (IgG) obtained by limited digestion with the enzyme pepsin under controlled conditions of temperature, time and pH. F(ab')₂ Molecules lack the Fc portion of IgG and therefore receptors that bind rat IgG F(c) will not bind rat IgG F(ab')₂ Molecules. Secondary Antibodies are available in a variety of formats and conjugate types. When choosing a secondary antibody product, consideration must be given to species and immunoglobulin specificity, conjugate type, fragment and chain specificity, level of cross-reactivity, and host-species source and fragment composition. This Anti-Rat IgG F(ab')₂ is conjugated to Texas Red™.</p>

Application Details

Application Notes:	<p>Application Note: This product is designed for immunofluorescence microscopy, fluorescence based plate assays (FLISA) and fluorescent western blotting. This product is also suitable for multiplex analysis, including multicolor imaging, utilizing various commercial platforms.</p> <p>FLISA Dilution: 1:10,000 - 1:50,000</p> <p>Flow Cytometry Dilution: 1:500 - 1:2,500</p> <p>IF Microscopy Dilution: 1:1,000 - 1:5,000</p>
Comment:	Texas Red™ is a registered trademark of Molecular Probes Inc.
Restrictions:	For Research Use only

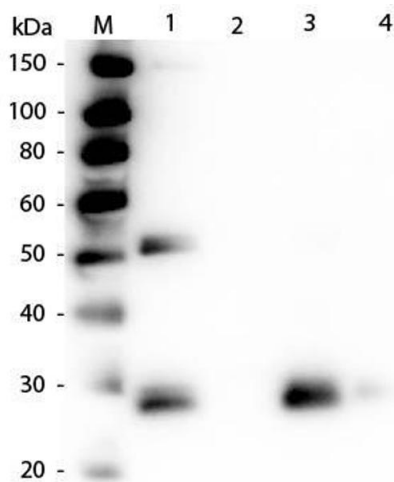
Handling

Format:	Lyophilized
Reconstitution:	<p>Reconstitution Volume: 1.0 mL</p> <p>Reconstitution Buffer: Restore with deionized water (or equivalent)</p>
Concentration:	2.0 mg/mL
Buffer:	<p>Buffer: 0.02 M Potassium Phosphate, 0.15 M Sodium Chloride, pH 7.2</p> <p>Stabilizer: 10 mg/mL Bovine Serum Albumin (BSA) - Immunoglobulin and Protease free</p> <p>Preservative: 0.01 % (w/v) Sodium Azide</p>

Handling

Preservative:	Sodium azide
Precaution of Use:	This product contains Sodium azide: a POISONOUS AND HAZARDOUS SUBSTANCE which should be handled by trained staff only.
Handling Advice:	Product is photosensitive and should be protected from light.
Storage:	RT,4 °C,-20 °C
Expiry Date:	12 months

Images



Western Blotting

Image 1. Western Blot of Anti-Rat IgG F(ab')₂ (RABBIT) Antibody . Lane M: 3 µl Molecular Ladder. Lane 1: Rat IgG whole molecule . Lane 2: Rat IgG F(c) Fragment . Lane 3: Rat IgG Fab Fragment . Lane 4: Rat IgM Whole Molecule . All samples were reduced. Load: 50 ng per lane. Block: ABIN925618 for 30 min at RT. Primary Antibody: Anti-Rat IgG F(ab')₂ (RABBIT) Antibody 1:1,000 for 60 min at RT. Secondary Antibody: Anti-Rabbit IgG (GOAT) Peroxidase Conjugated Antibody 1:40,000 in ABIN925618 for 30 min at RT. Predicted/Observed Size: 25 and 55 kDa for Rat IgG, 25 kDa for F(c) and Fab, 78 and 25 kDa for IgM. Rat F(c) migrates slightly higher.