



[Go to Product page](#)

Datasheet for ABIN102201

Goat anti-Rat IgG (Fc Region) Antibody (FITC) - Preadsorbed

2 Images

Overview

Quantity:	2 mg
Target:	IgG
Binding Specificity:	Fc Region
Reactivity:	Rat
Host:	Goat
Clonality:	Polyclonal
Conjugate:	FITC
Application:	Flow Cytometry (FACS), FLISA, Fluorescence Microscopy (FM)

Product Details

Immunogen:	Immunogen: Rat IgG F(c) fragment
Isotype:	IgG
Specificity:	IgG F(c)
Characteristics:	Concentration Definition: by UV absorbance at 280 nm
Purification:	PreadSORption: Solid phase absorption
Labeling Ratio:	3.45

Target Details

Target:	IgG
Abstract:	IgG Products

Target Details

Target Type:	Antibody
Background:	<p>Synonyms: Goat Anti-Rat IgG F(c) fluorescein Conjugated Antibody, Goat Anti-Rat IgG F(c) fragment Antibody FITC Conjugation</p> <p>Background: Anti-Rat IgG F(c) generated in goat is a proteolytic fragment of immunoglobulin G (IgG) obtained by limited digestion with the enzyme papain under controlled conditions of temperature, time and pH . Receptors bind the Fc portion of rat IgG and often this fragment is removed from immunoglobulins to minimize receptor binding and lower background reactivity.</p>

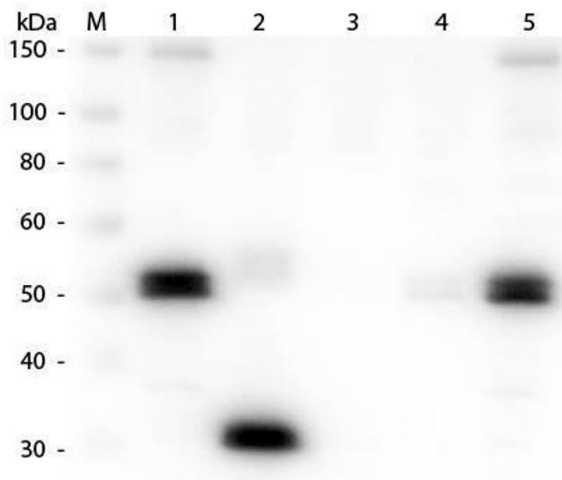
Application Details

Application Notes:	<p>Application Note: This product is designed for immunofluorescence microscopy, fluorescence based plate assays (FLISA) and fluorescent western blotting. This product is also suitable for multiplex analysis, including multicolor imaging, utilizing various commercial platforms.</p> <p>FLISA Dilution: 1:10,000 - 1:50,000</p> <p>Flow Cytometry Dilution: 1:500 - 1:2,500</p> <p>IF Microscopy Dilution: 1:1,000 - 1:5,000</p>
Comment:	Excitation/Emission wavelength: 494 nm/514 nm
Restrictions:	For Research Use only

Handling

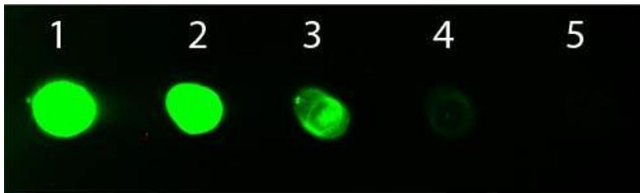
Format:	Lyophilized
Reconstitution:	<p>Reconstitution Volume: 1.0 mL</p> <p>Reconstitution Buffer: Restore with deionized water (or equivalent)</p>
Concentration:	2.0 mg/mL
Buffer:	<p>Buffer: 0.02 M Potassium Phosphate, 0.15 M Sodium Chloride, pH 7.2</p> <p>Stabilizer: 10 mg/mL Bovine Serum Albumin (BSA) - Immunoglobulin and Protease free</p> <p>Preservative: 0.01 % (w/v) Sodium Azide</p>
Preservative:	Sodium azide
Precaution of Use:	This product contains Sodium azide: a POISONOUS AND HAZARDOUS SUBSTANCE which should be handled by trained staff only.
Handling Advice:	Product is photosensitive and should be protected from light.
Storage:	RT, 4 °C, -20 °C

Images



Western Blotting

Image 1. Western Blot of Anti-Rat IgG F(c) (GOAT) Antibody . Lane M: 3 μ l Molecular Ladder. Lane 1: Rat IgG whole molecule . Lane 2: Rat IgG F(c) Fragment . Lane 3: Rat IgG Fab Fragment . Lane 4: Rat IgM Whole Molecule . Lane 5: Rat Serum . All samples were reduced. Load: 50 ng per lane. Block: ABIN925618 for 30 min at RT. Primary Antibody: Anti-Rat IgG F(c) (GOAT) Antibody 1:1,000 for 60 min at RT. Secondary Antibody: Anti-Goat IgG (DONKEY) Peroxidase Conjugated Antibody 1:40,000 in ABIN925618 for 30 min at RT. Predicted/Obsevered Size: 25 and 55 kDa for Rat IgG and Serum, 25 kDa for F(c) and Fab, 78 and 25 kDa for IgM. Rat F(c) migrates slightly higher.



Dot Blot

Image 2. Dot Blot of Goat anti-Rat IgG Fc Antibody Fluorescein Conjugated. Antigen: Rat IgG. Load: Lane 1 - 100 ng Lane 2 - 33.3 ng Lane 3 - 11.1 ng Lane 4 - 3.70 ng Lane 5 - 1.23 ng. Primary antibody: n/a. Secondary antibody: Goat anti-Rat IgG Fc Antibody Fluorescein Conjugated at 1:1,000 for 60 min at RT. Block: ABIN925618 for 1 HR at RT.