



[Go to Product page](#)

Datasheet for ABIN102218

Donkey anti-Sheep IgG (Heavy & Light Chain) Antibody

1 Image

Overview

Quantity:	50 mg
Target:	IgG
Binding Specificity:	Heavy & Light Chain
Reactivity:	Sheep
Host:	Donkey
Clonality:	Polyclonal
Application:	ELISA, Immunohistochemistry (IHC), Western Blotting (WB)

Product Details

Immunogen:	Immunogen: Sheep IgG whole molecule Immunogen Type: Native Protein
Isotype:	IgG
Specificity:	IgG (H&L)
Characteristics:	Anti-Sheep IgG unconjugated antibody was generated in donkey and detects specifically sheep IgG. This primary unconjugated anti-Sheep antibody is ideal for investigators who routinely perform titration assays, western-blot, immunoprecipitation and more generally immunoassays. Concentration Definition: by UV absorbance at 280 nm
Purification:	Sheep IgG (H&L) Antibody is an IgG fraction antibody purified from monospecific antiserum by a multi-step process which includes delipidation, salt fractionation and ion exchange chromatography followed by extensive dialysis against the buffer stated above. Assay by

Product Details

immunoelectrophoresis resulted in a single precipitin arc against anti-Donkey Serum, Sheep IgG and Sheep Serum. This antibody will detect intact and immunoglobulin components from Sheep.

Target Details

Target: IgG

Abstract: [IgG Products](#)

Target Type: Antibody

Background: Synonyms: donkey anti-Sheep IgG Antibody, donkey anti-Sheep IgG Antibody
Background: Anti-Sheep IgG unconjugated antibody was generated in donkey and detects specifically sheep IgG. This primary unconjugated anti-Sheep antibody is ideal for investigators who routinely perform titration assays, western-blot, immunoprecipitation and more generally immunoassays.

Application Details

Application Notes: Immunohistochemistry Dilution: 1:1,000 - 1:5,000
Application Note: Anti-Sheep IgG unconjugated antibody is suitable for multiple immunoassays including immunoblotting (western or dot blot), ELISA, immunoperoxidase electron microscopy and immunohistochemistry as well as other peroxidase-antibody based enzymatic assays requiring lot-to-lot consistency. The antibody may be conjugated to the end user specifications.
ELISA Dilution: 1:20,000 - 1:100,000
Western Blot Dilution: 1:2,000 - 1:10,000

Restrictions: For Research Use only

Handling

Format: Lyophilized

Reconstitution: Reconstitution Volume: 5.0 mL
Reconstitution Buffer: Restore with deionized water (or equivalent)

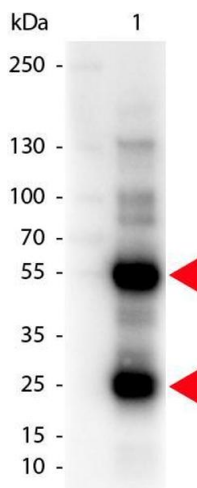
Concentration: 10.0 mg/mL

Buffer: Buffer: 0.01 M Sodium Phosphate, 0.15 M Sodium Chloride, pH 7.2
Stabilizer: None
Preservative: 0.01 % (w/v) Sodium Azide

Handling

Preservative:	Sodium azide
Precaution of Use:	This product contains Sodium azide: a POISONOUS AND HAZARDOUS SUBSTANCE which should be handled by trained staff only.
Storage:	RT,4 °C,-20 °C
Expiry Date:	12 months

Images



Western Blotting

Image 1. Western Blot of Donkey anti-Sheep IgG Antibody. Lane 1: Sheep IgG. Lane 2: None. Load: 50 ng per lane. Primary antibody: Sheep antibody at 1,000 overnight at 4°C. Secondary antibody: Peroxidase donkey secondary antibody at 1:40,000 for 30 min at RT. Block: ABIN925618 for 30 min at RT. Predicted/Observed size: 28 & 55 kDa, 28 & 55 kDa for Sheep IgG. Other band(s): Sheep IgG splice variants and isoforms.