

Datasheet for ABIN102255

Rabbit anti-Sheep IgG (Heavy & Light Chain) Antibody (HRP)[Go to Product page](#)**2** Images

Overview

Quantity:	2 mg
Target:	IgG
Binding Specificity:	Heavy & Light Chain
Reactivity:	Sheep
Host:	Rabbit
Clonality:	Polyclonal
Conjugate:	HRP
Application:	ELISA, Western Blotting (WB)

Product Details

Immunogen:	Anti-Sheep IgG was produced by repeated immunization with Sheep IgG whole molecule in rabbit.
Isotype:	IgG
Specificity:	IgG (H&L)
Characteristics:	Anti-Sheep IgG antibody generated in rabbit detects specifically sheep IgG. This secondary antibody anti-Sheep is ideal for investigators who routinely perform ELISA, Sandwich ELISA, titration assays, western-blot, immunoprecipitation and more generally immunoassays. Concentration Definition: by UV absorbance at 280 nm

Target Details

Target:	IgG
---------	-----

Target Details

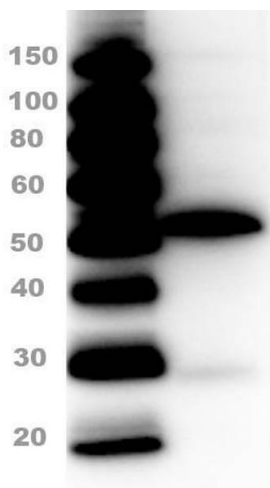
Abstract:	IgG Products
Target Type:	Antibody
Background:	Synonyms: Sheep Antibody, Rb-a-Sheep IgG, Sheep Antibody in Rabbit, Sheep Secondary Antibody

Application Details

Application Notes:	Anti-Sheep IgG (H&L) is suitable for use in immunoelectrophoresis, western-blot, competitive western-blot, ELISA and competitive ELISA assays. Specific conditions for reactivity and signal detection should be optimized by the end user.
Restrictions:	For Research Use only

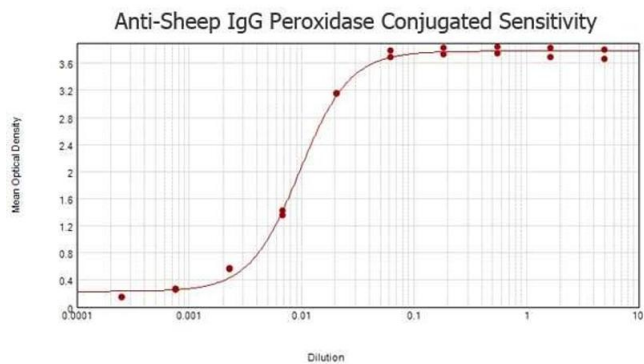
Handling

Format:	Lyophilized
Reconstitution:	Restore with deionized water (or equivalent)
Concentration:	2.0 mg/mL
Buffer:	0.02 M Potassium Phosphate, 0.15 M Sodium Chloride, pH 7.2
Preservative:	Gentamicin sulfate
Handling Advice:	Do NOT add Sodium Azide! Use of Sodium Azide will inhibit enzyme activity of horseradish peroxidase.
Storage:	4 °C



Western Blotting

Image 1. Western Blot of Rabbit Anti-Sheep IgG Peroxidase Conjugated Antibody Western Blot of Rabbit Anti-Sheep IgG Peroxidase Conjugated Antibody. Lane 1: Super Signal Molecular Weight. Lane 2: Sheep IgG. Detection: Rabbit Anti-Sheep IgG Peroxidase Conjugated Antibody at 1:1000 overnight at 2-8°C.



ELISA

Image 2. ELISA results of purified Rabbit anti-Sheep IgG Antibody Peroxidase Conjugated tested against purified Sheep IgG. Each well was coated in duplicate with 1.0 µg of Sheep IgG . The starting dilution of antibody was 5µg/ml and the X-axis represents the Log10 of a 3-fold dilution. This titration is a 4-parameter curve fit where the IC50 is defined as the titer of the antibody. Assay performed using 3% fish gelatin as blocking buffer and TMB substrate p/n TMBE-1000.